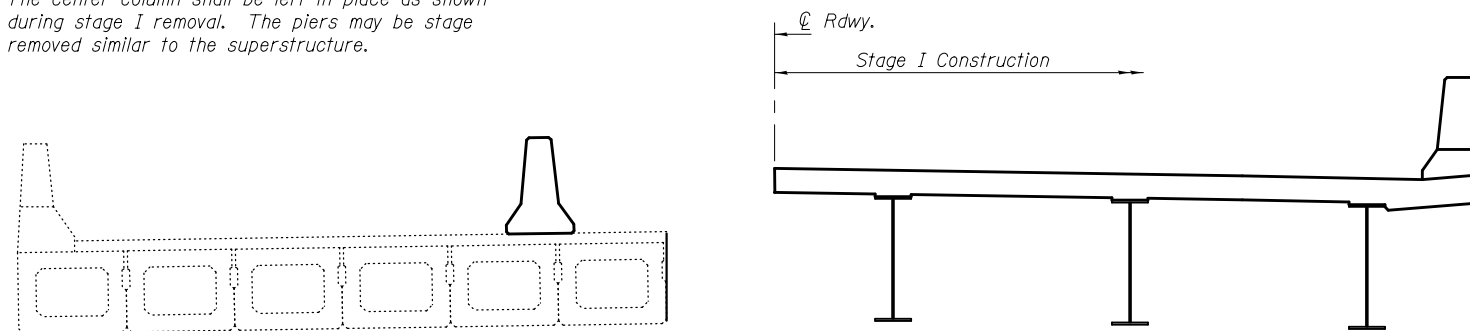
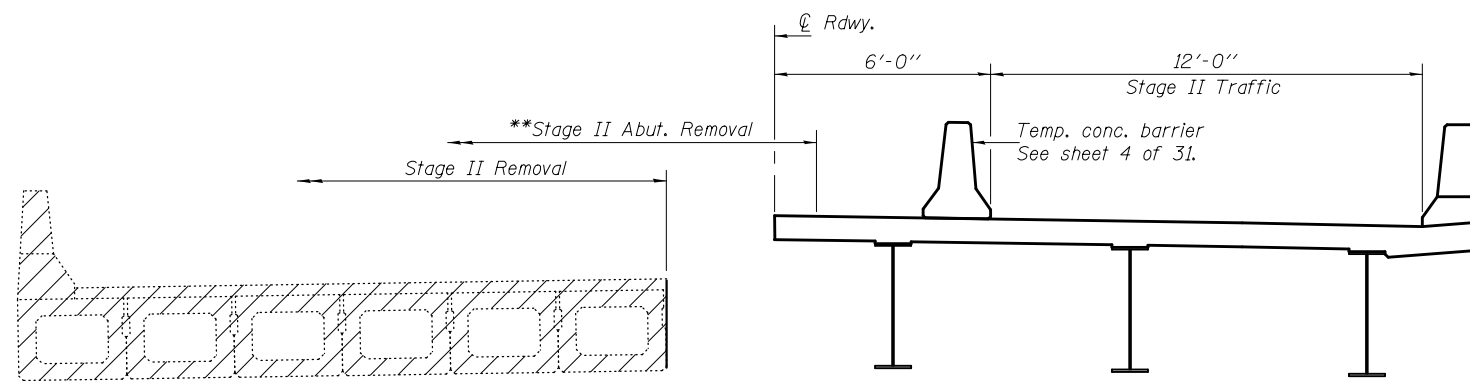


**STAGE I REMOVAL**

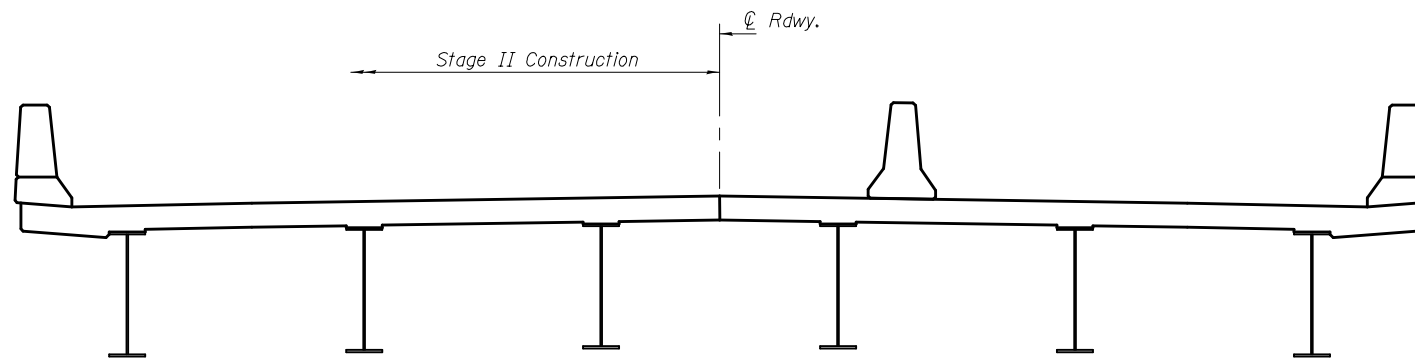
\*\*The existing abutments are 3 column frames. The center column shall be left in place as shown during stage I removal. The piers may be stage removed similar to the superstructure.



**STAGE I CONSTRUCTION**

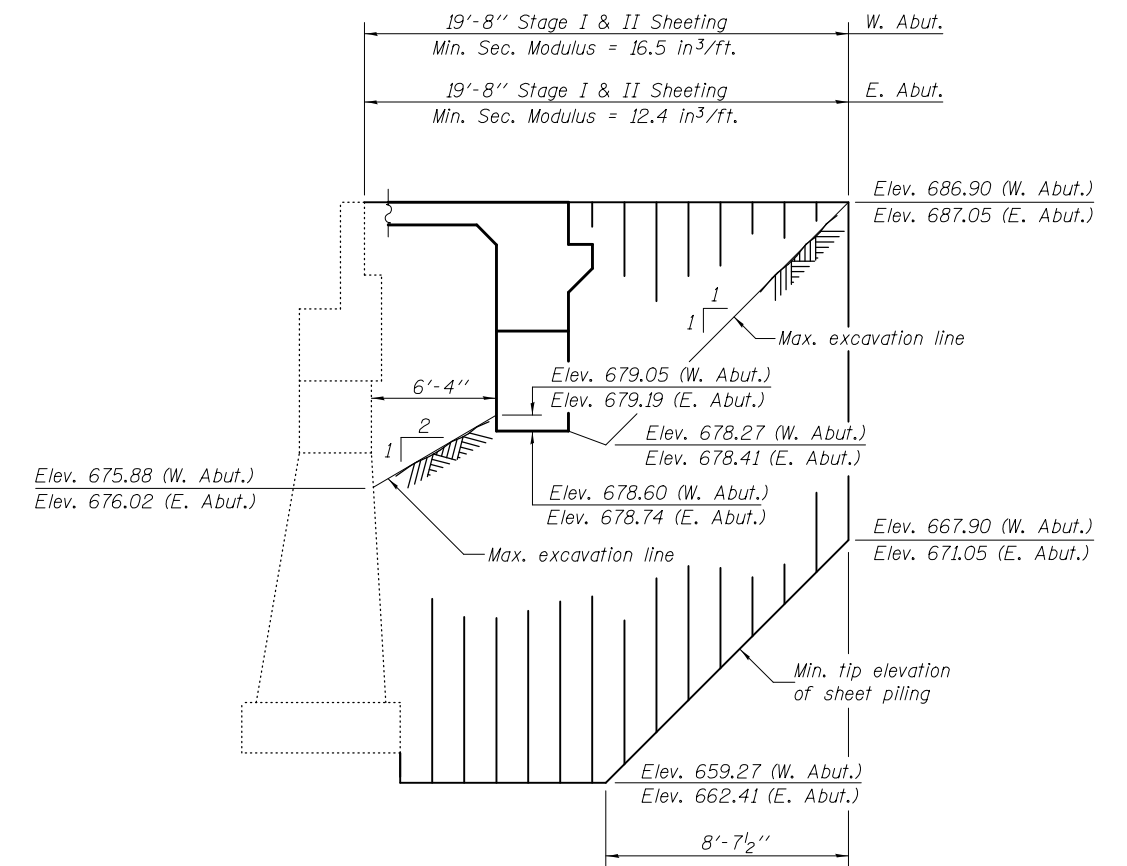


**STAGE II REMOVAL**



**STAGE II CONSTRUCTION**

Notes: All sections are looking East.  
Hatched area indicates removal of existing superstructure.  
For quantity of temporary concrete barrier, see Roadway Plans.



**TEMPORARY SHEET PILING AT ABUTMENTS**

If the Contractor chooses to alter the temporary cantilevered sheet piling design requirements shown on the plans, a design submittal including plan details and calculations will be required for review and acceptance by the Engineer.

The Contractor shall connect the first sheet to the existing abutment wall to ensure stability of sheets driven to the top of the existing footing. This connection shall be reviewed and accepted by the Engineer and the cost included with Temporary Sheet Piling.

DESIGNED - Michael D. Rolape
CHECKED - Nicholas R. Barnett
DRAWN - h.t. duong
CHECKED - MDR/NRB

EXAMINED	<i>Thomas Domagalaki</i> ENGINEER OF BRIDGE DESIGN	DATE - OCTOBER 5, 2011
PASSED	<i>Carl Perry</i> ENGINEER OF BRIDGES AND STRUCTURES	

STATE OF ILLINOIS  
DEPARTMENT OF TRANSPORTATION

STAGE CONSTRUCTION & TEMPORARY SHEET PILING DETAILS  
STRUCTURE NO. 057-0244

F.A.P. RTE.	SECTION	COUNTY	TOTAL SHEETS	SHEET NO.
315	121 BR-2	MCLEAN	144	51
CONTRACT NO. 70552				

SHEET NO. 3 OF 30 SHEETS

ILLINOIS FED. AID PROJECT