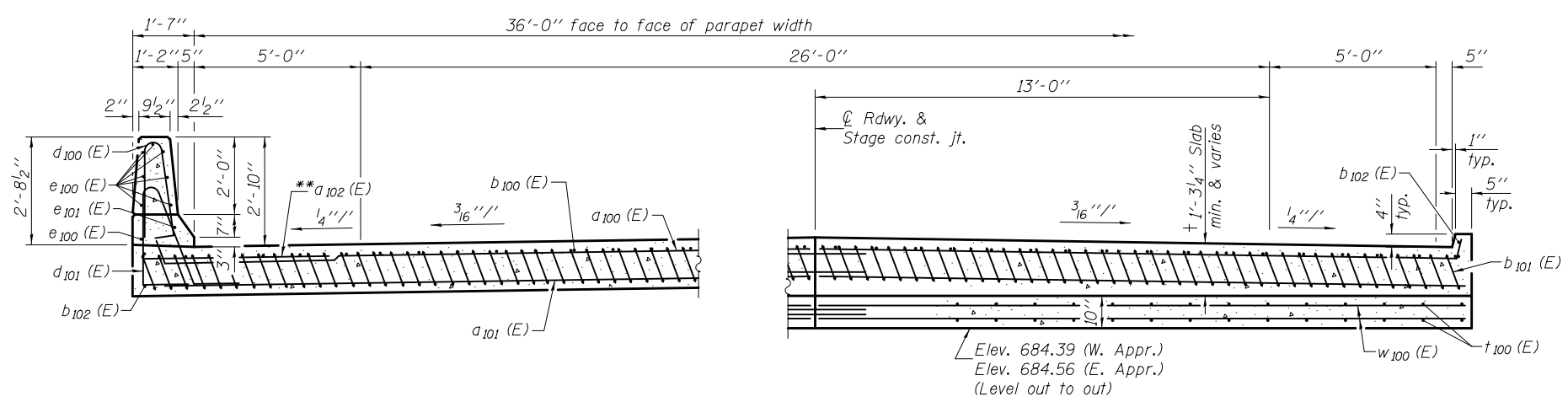


SECTION C-C
† Prior to grinding.

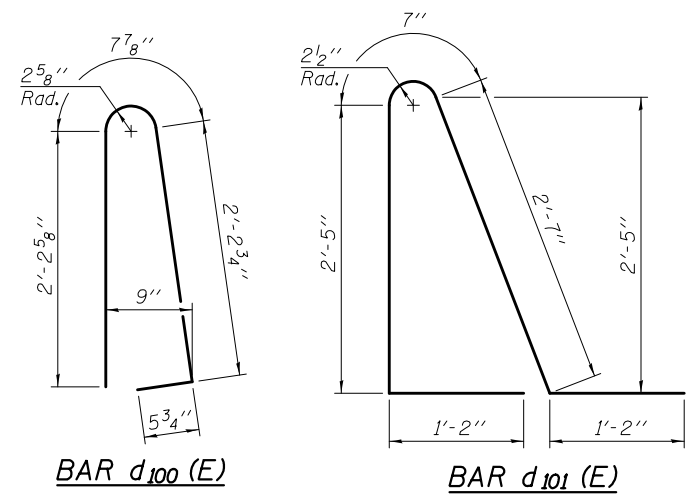
Notes:
See sheet 14 of 30 for Detail A and View B-B.
Approach slab and parapet concrete shall be paid for as Concrete Superstructure.
Approach footing concrete shall be paid for as Concrete Structures.
Reinforcement shall be paid for as Reinforcement Bars, Epoxy Coated.
For v(E) bar details, see sheet 12 of 30.
The approach footing maximum applied service bearing pressure (Qmax) = 2.0 ksf.
For bar splicer details, see sheet 23 of 30.
Cost of excavation for approach footing included with Concrete Structures.
For Porous Granular Embankment (Special) and drainage treatment details, see sheet 2 of 30.
For additional parapet details, see sheet 12 of 30.



NEAR ABUTMENT

SECTION D-D
(See Plan for dimensions not shown)

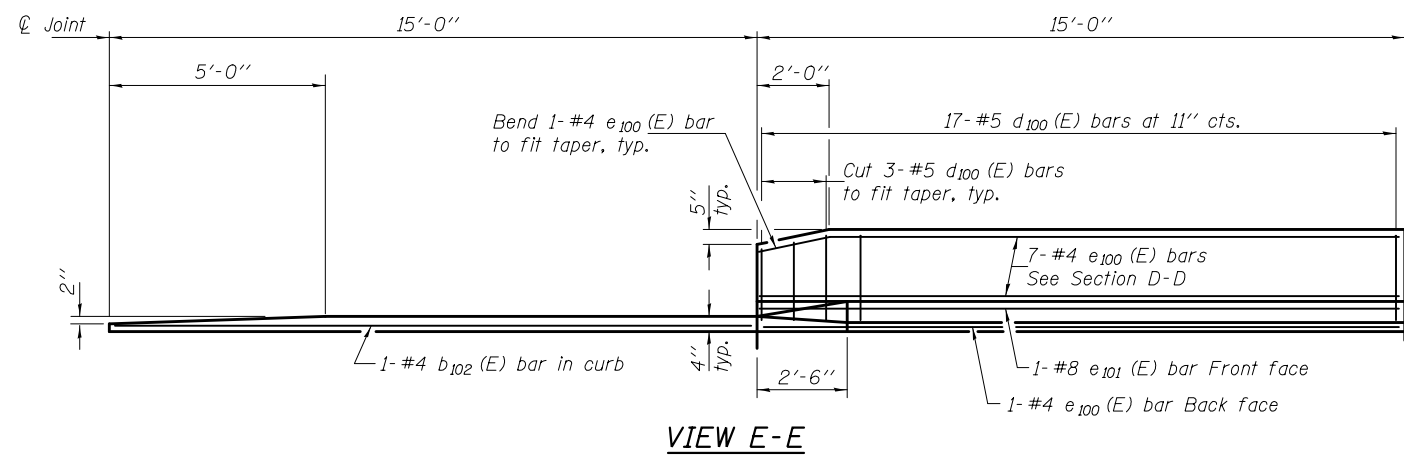
AT APPROACH FOOTING



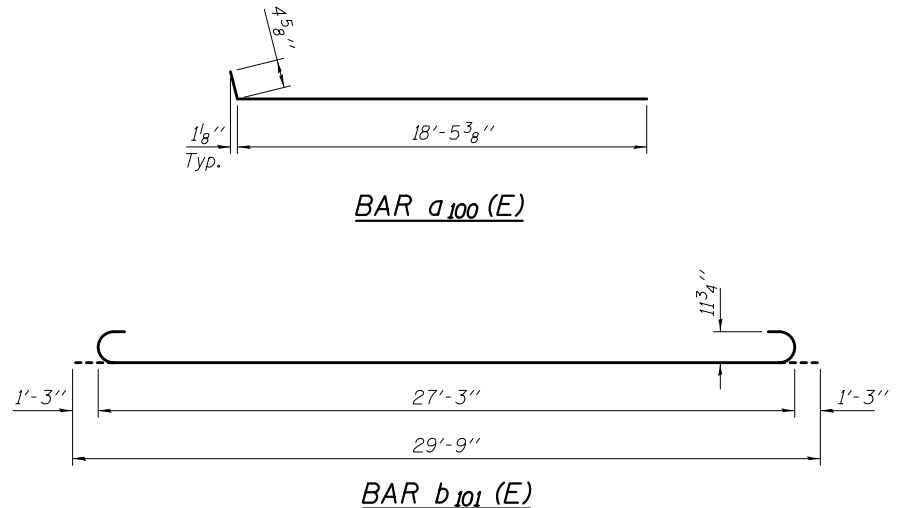
TWO APPROACHES
BILL OF MATERIAL

Bar	No.	Size	Length	Shape
a ₁₀₀ (E)	100	#4	18'-10"	┌───┐
a ₁₀₁ (E)	184	#5	18'-8"	┌───┐
a ₁₀₂ (E)	48	#6	6'-6"	┌───┐
b ₁₀₀ (E)	64	#4	29'-8"	┌───┐
b ₁₀₁ (E)	184	#9	29'-9"	┌───┐
b ₁₀₂ (E)	8	#4	14'-8"	┌───┐
d ₁₀₀ (E)	68	#5	5'-7"	┌───┐
d ₁₀₁ (E)	68	#5	7'-11"	┌───┐
e ₁₀₀ (E)	32	#4	14'-8"	┌───┐
e ₁₀₁ (E)	4	#8	14'-8"	┌───┐
t ₁₀₀ (E)	160	#4	9'-8"	┌───┐
w ₁₀₀ (E)	160	#5	18'-8"	┌───┐
Concrete Superstructure			Cu. Yd.	118.2
Concrete Structures			Cu. Yd.	23.4
Reinforcement Bars, Epoxy Coated			Pound	30840

*Tilt #9 b₁₀₁ (E) bars as required to maintain clearance.
**Spaced between a₁₀₀ (E) bars, typ. ea. parapet.
***Cost included with Concrete Superstructure.



VIEW E-E



DESIGNED - Michael D. Rolape	EXAMINED - <i>Thomas Domagalak</i>	DATE - OCTOBER 5, 2011
CHECKED - Nicholas R. Barnett	PASSED - <i>Carl...</i>	
DRAWN - h.t. duong		
CHECKED - MDR/NRB		

STATE OF ILLINOIS
DEPARTMENT OF TRANSPORTATION

BRIDGE APPROACH SLAB DETAILS
STRUCTURE NO. 057-0244

SHEET NO. 15 OF 30 SHEETS

F.A.P. RTE.	SECTION	COUNTY	TOTAL SHEETS	SHEET NO.
315	121 BR-2	MCLEAN	144	63
				CONTRACT NO. 70552
ILLINOIS FED. AID PROJECT				