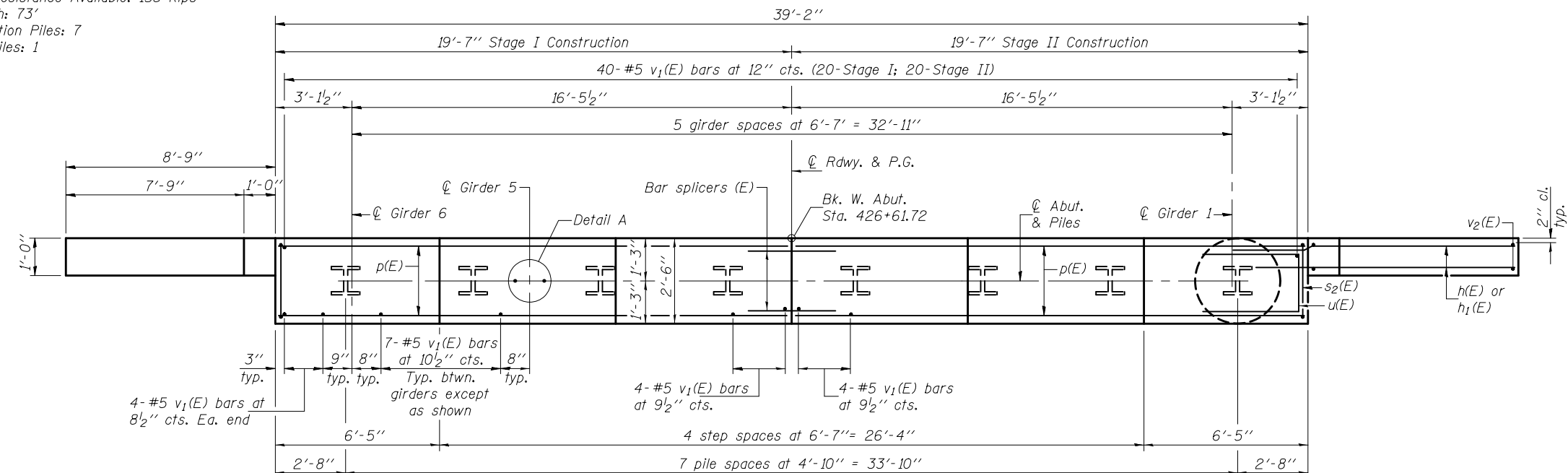
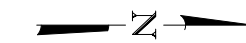


PILE DATA

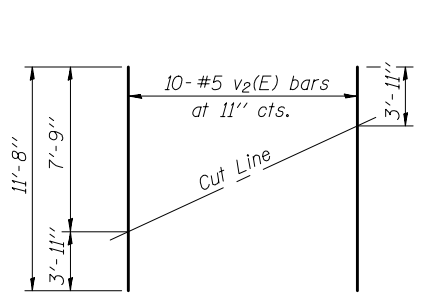
Type: Steel HP14x73
 Nominal Required Bearing: 287 Kips
 Factored Resistance Available: 158 Kips
 Est. Length: 73'
 No. Production Piles: 7
 No. Test Piles: 1

ELEVATION
 (Looking west)



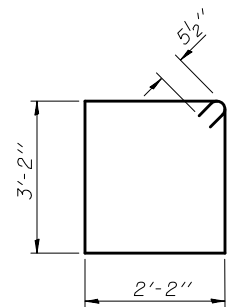
PLAN

Notes: Four steps monolithically with cap.
 For details of piles and concrete encasement, see sheet 24 of 30.
 For bar splicer details, see sheet 23 of 30.

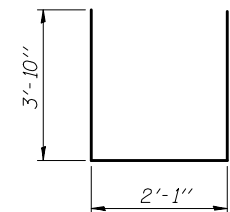


FIELD CUTTING DIAGRAM

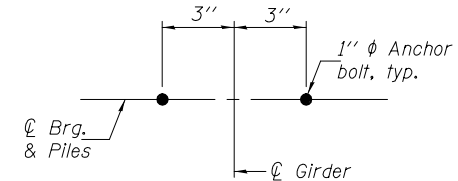
Order v2(E) full length. Cut as shown and use remainder of bars in opposite face.



BAR s2(E)



BAR u(E)



DETAIL A

BILL OF MATERIAL

Bar	No.	Size	Length	Shape	
h(E)	56	#6	10'-10"	—	
h1(E)	4	#5	11'-10"	—	
p(E)	18	#7	19'-3"	—	
s2(E)	48	#5	11'-7"	□	
u(E)	8	#6	9'-9"	□	
v1(E)	84	#5	4'-4"	—	
v2(E)	20	#5	11'-8"	—	
Structure Excavation				Cu. Yd.	93
Concrete Structures				Cu. Yd.	17.4
Reinforcement Bars, Epoxy Coated				Pound	2990
Furnishing Steel Piles HP14x73				Foot	511
Driving Piles				Foot	511
Test Pile Steel HP14x73				Each	1
Concrete Encasement				Cu. Yd.	4.4
Anchor Bolts, 1" φ				Each	12