

STATE OF ILLINOIS
DEPARTMENT OF TRANSPORTATION
DIVISION OF HIGHWAYS

**PROPOSED
HIGHWAY PLANS**

F.A.P. ROUTE 729 (US-136)
SECTION 38BR-1

**BRIDGE DECK REPAIRS
LICK CREEK AT EAST EDGE OF DANVILLE
VERMILION COUNTY**

C-95-040-11

F.A.P. RTE.	SECTION	COUNTY	TOTAL SHEETS	SHEET NO.
729	38BR-1	VERMILION	25	1
		ILLINOIS	CONTRACT NO. 70596	

D-95-110-06

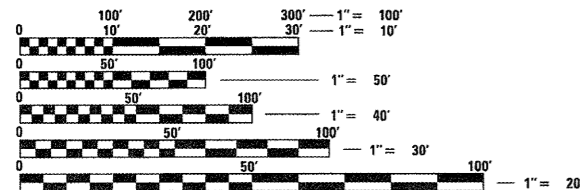


FOR INDEX OF SHEETS, SEE SHEET NO. 2
FOR SUMMARY OF QUANTITIES, SEE SHEET NO. 3

**CURRENT
TRAFFIC DATA**

2010 ADT = 5,900
2030 ADT = 6,500
PU + PC % = 95.5
SU % = 2.2
MU% = 2.3

**DESIGN DESIGNATION
OTHER PRINCIPLE ARTERIAL**

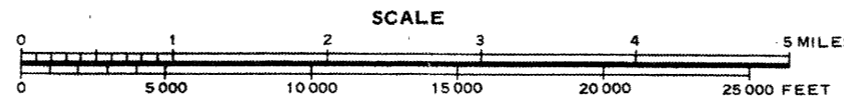
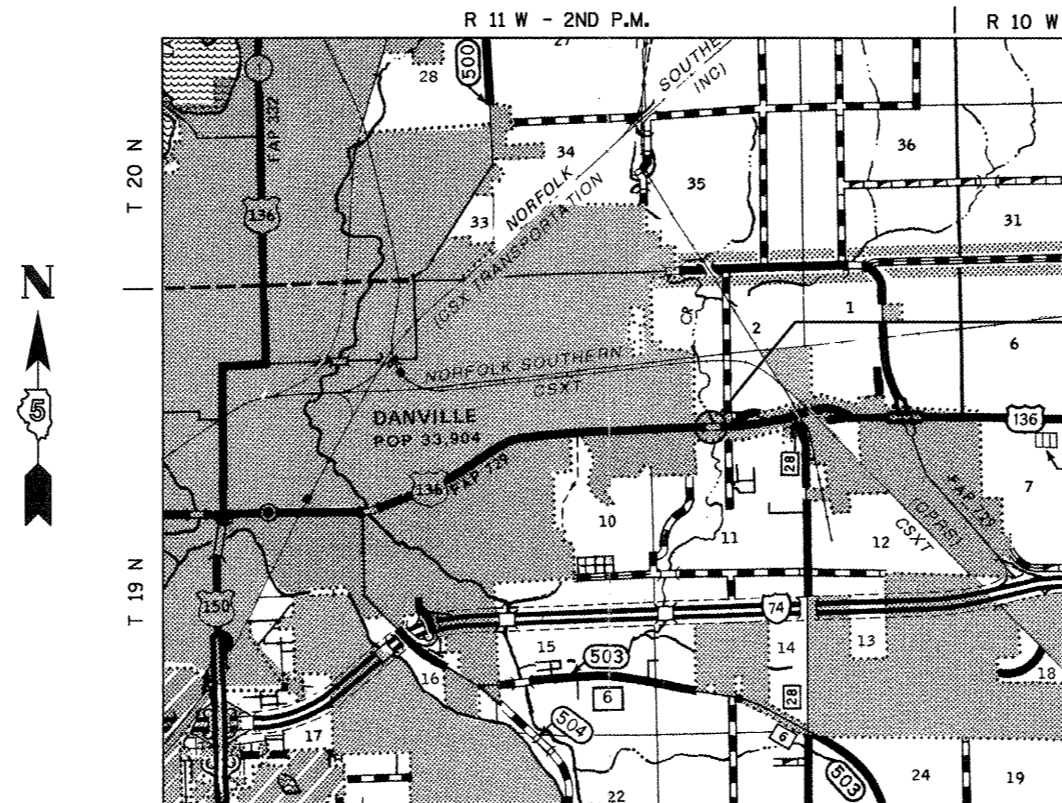


FULL SIZE PLANS HAVE BEEN PREPARED USING STANDARD ENGINEERING SCALES. REDUCED SIZED PLANS WILL NOT CONFORM TO STANDARD SCALES. IN MAKING MEASUREMENTS ON REDUCED PLANS, THE ABOVE SCALES MAY BE USED.

J.U.L.I.E.
JOINT UTILITY LOCATION INFORMATION FOR EXCAVATION
1-800-892-0123
OR 811 DANVILLE TOWNSHIP

PROJECT ENGINEER: TIM BRANDENBURG
PROJECT MANAGER: GARY SIMS
217-465-4181

CONTRACT NO. 70596



GROSS LENGTH = 299.0 FT. = 0.06 MILE
NET LENGTH = 299.0 FT. = 0.06 MILE

EXISTING S.N. 092-0144
F.A.P. 729 (US-136)
STATION 8+97.50
OVER LICK CREEK
PROPOSED STRUCTURE REPAIRS

STATE OF ILLINOIS
DEPARTMENT OF TRANSPORTATION
DIVISION OF HIGHWAYS

SUBMITTED 8/9 20 11
Jessie K. Cooney
DEPUTY DIRECTOR OF HIGHWAYS, REGION ENGINEER

Oct 14 20 11
Scott E. Stitt, P.E.
acting ENGINEER OF DESIGN AND ENVIRONMENT

Oct 14 20 11
Christine M. Reed
DIRECTOR OF HIGHWAYS, CHIEF ENGINEER

**PRINTED BY THE AUTHORITY
OF THE STATE OF ILLINOIS**