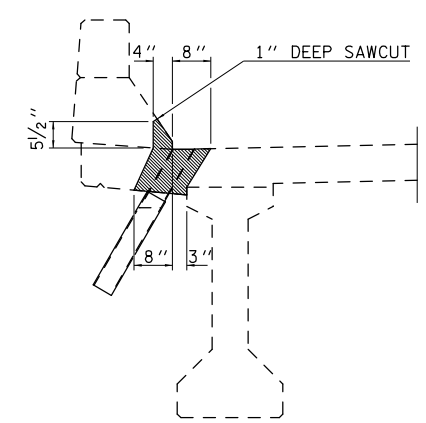
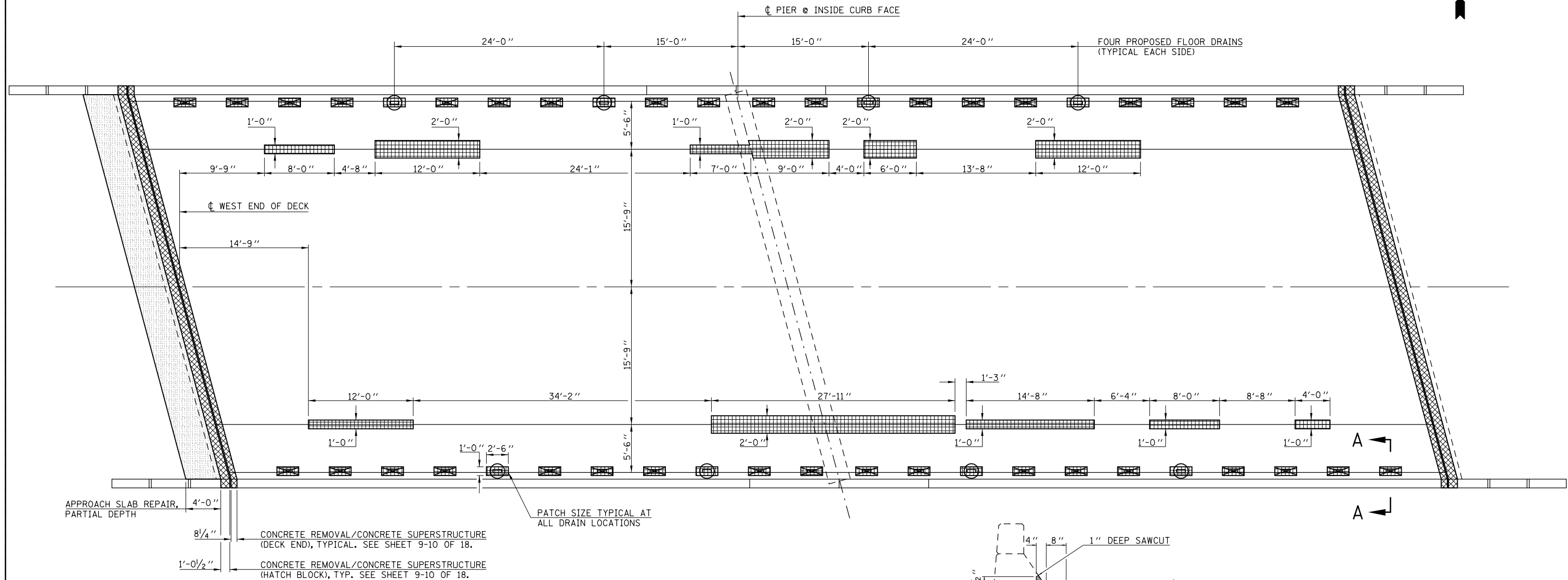


DECK SURVEY PERFORMED ON MARCH 31, 2011. IF MORE THAN ONE WINTER FREEZE-THAW CYCLE OCCURS BETWEEN THE INITIAL INSPECTION AND THE COMMENCEMENT OF WORK, THE FINAL PLAN QUANTITIES FOR DECK REPAIRS MUST BE BASED ON A NEW INSPECTION OF THE DECK.

DECK AND APPROACH SLAB REPAIR PLAN S.N. 092-0144



SECTION A-A

SHOWING REMOVAL LIMITS FOR DECK SLAB REPAIR (FULL-DEPTH, TYPE I) AT DRAIN LOCATIONS

LEGEND

- ELIMINATE FLOOR DRAIN — SEE SHEET 8 OF 18 FOR DETAILS ASSOCIATED WITH PROPOSED FLOOR DRAINS
- PROPOSED FLOOR DRAIN LOCATION
- DECK SLAB REPAIR (FULL DEPTH, TYPE I & TYPE II)
- CONCRETE REMOVAL AND CONCRETE SUPERSTRUCTURE
- APPROACH SLAB REPAIR, PARTIAL DEPTH

NOTES:

PATCH SIZES SHOWN REPRESENT CONDITIONS AT THE TIME THE PLANS WERE COMPLETED. THE ACTUAL SIZES AND LOCATIONS OF PATCHING SHALL BE DETERMINED BY THE ENGINEER. THE ENGINEER SHALL SHOW THE ACTUAL LOCATIONS OF THE DECK REPAIRS ON THIS SHEET.

THE EXISTING DRAINS AND EXTENSIONS SHALL BE REMOVED. COST INCLUDED WITH "DECK SLAB REPAIR (FULL DEPTH, TYPE I)".

EXTREME CARE MUST BE USED WHEN REMOVING CONCRETE NEAR THE TOP FLANGE OF THE P.P.C.I-BEAMS. THE CONTRACTOR IS RESPONSIBLE FOR ANY DAMAGE TO THE BEAMS.

BILL OF MATERIALS

ITEM	UNIT	TOTAL
DECK SLAB REPAIR (FULL DEPTH, TY I)	SQ YD	14.0
DECK SLAB REPAIR (FULL DEPTH, TY II)	SQ YD	22.0
APPROACH SLAB REPAIR (PARTIAL DEPTH)	SQ YD	20.0

SEE SHEET 9-10 OF 18 FOR CONCRETE REMOVAL AND CONCRETE SUPERSTRUCTURE QUANTITIES. SEE SHEET 8 OF 18 FOR FLOOR DRAIN QUANTITIES.