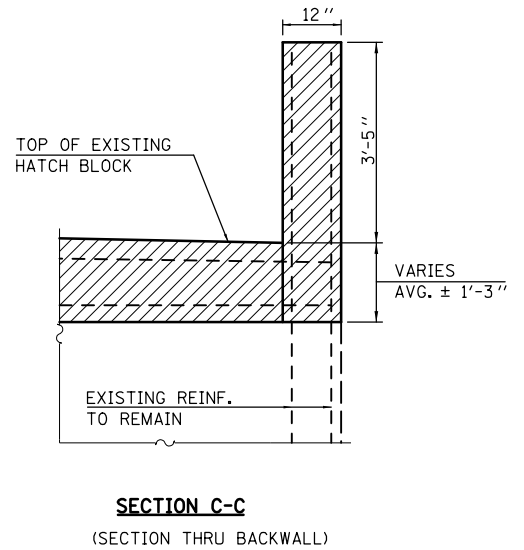
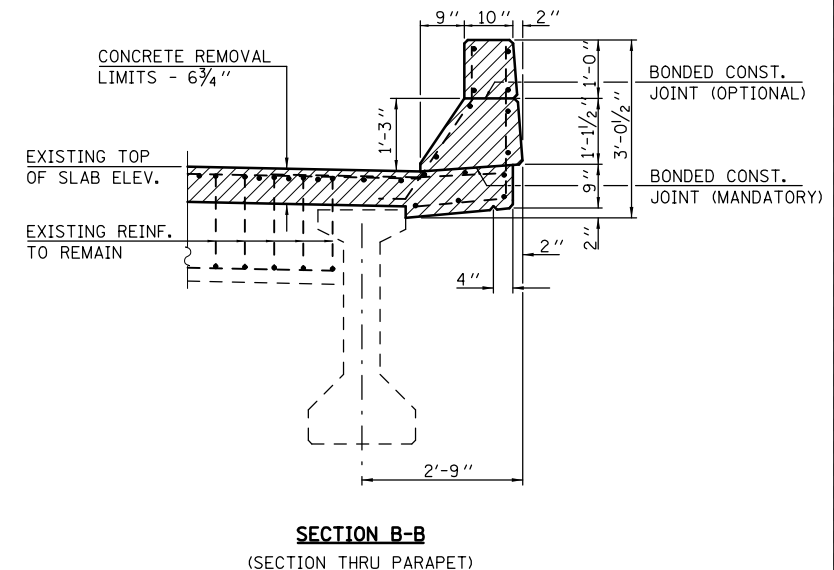
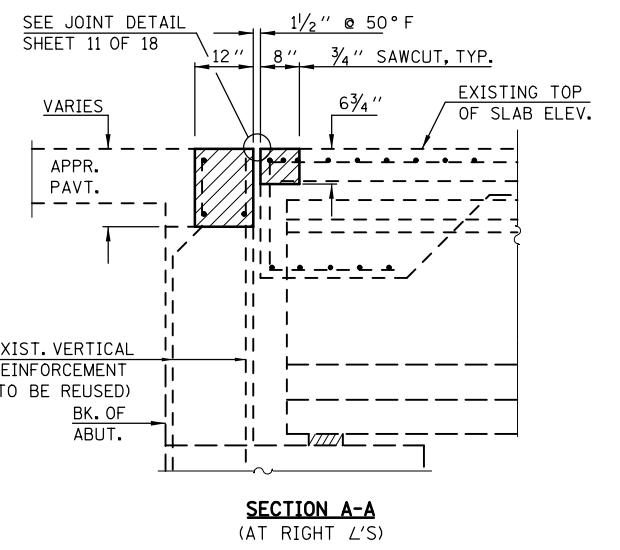
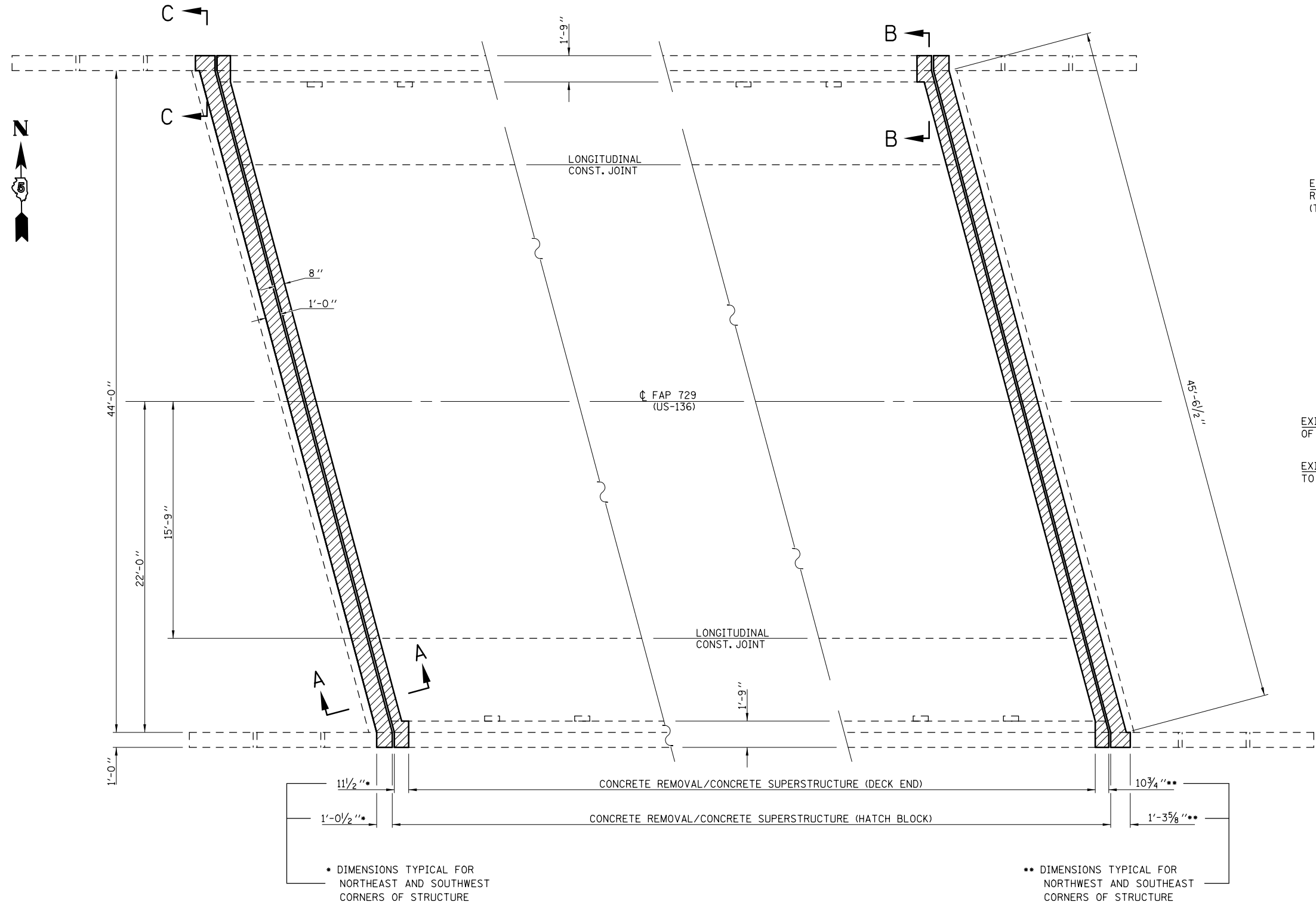


# SLAB REMOVAL DETAILS S.N. 092-0144



\* DIMENSIONS TYPICAL FOR NORTHEAST AND SOUTHWEST CORNERS OF STRUCTURE

\*\* DIMENSIONS TYPICAL FOR NORTHWEST AND SOUTHEAST CORNERS OF STRUCTURE

**NOTES:**

EXISTING REINFORCEMENT BARS EXTENDING INTO THE REMOVAL AREA SHALL BE CLEANED, STRAIGHTENED AND INCORPORATED INTO THE NEW CONSTRUCTION. ANY REINFORCEMENT BARS THAT ARE DAMAGED DURING CONCRETE REMOVAL SHALL BE REPLACED WITH AN APPROVED BAR SPLICER OR ANCHORAGE SYSTEM. COST INCLUDED WITH CONCRETE REMOVAL.

THE CONTRACTOR SHALL USE EXTREME CARE DURING CONCRETE REMOVAL SO AS NOT TO DAMAGE THE P.P.C. I-BEAM.

**BILL OF MATERIALS**

ITEM	UNIT	TOTAL
CONCRETE REMOVAL	CU YD	6.8