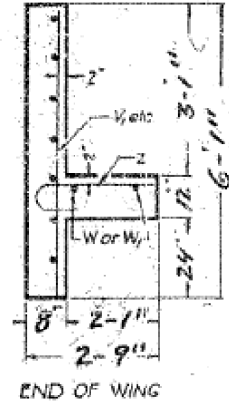
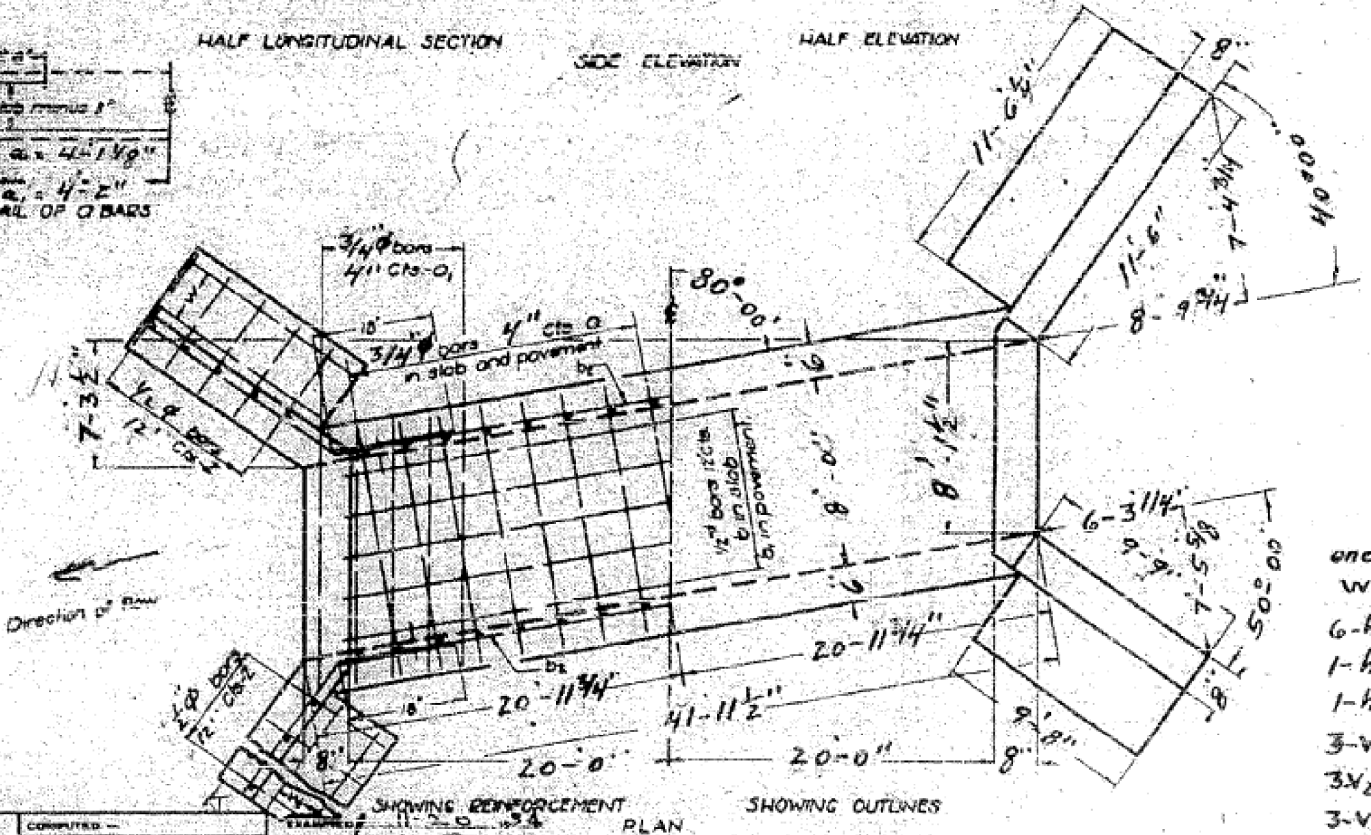
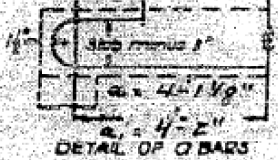
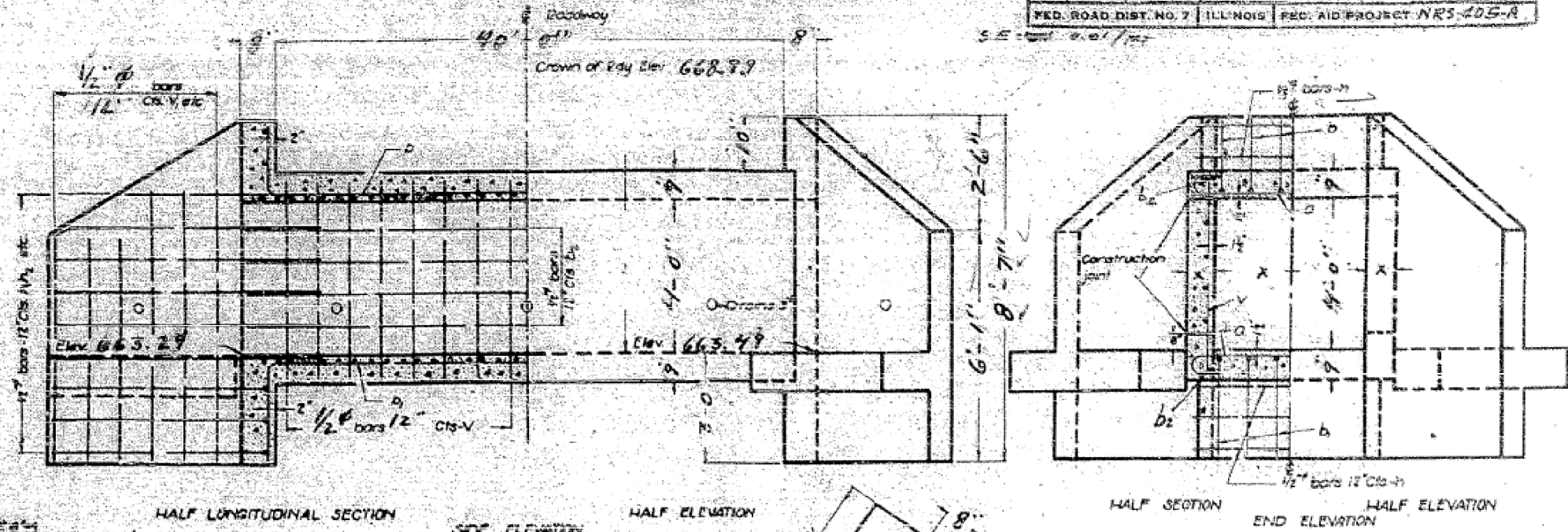


FOR INFORMATION ONLY

STATE OF ILLINOIS
DEPARTMENT OF PUBLIC WORKS & BUILDINGS
DIVISION OF HIGHWAYS

ROUTE NO.	SEC.	COUNTY	SHEETS	NO.	SHEET NO.
SA 7	123-NRS	Edgar	24	22	
FED. ROAD DIST. NO. 7		ILLINOIS	FED. AID PROJECT NRS-405-A		



BILL OF MATERIAL			
Bar	Number	Size	Length
a	234	3/4"	10'-9"
o	28	3/4"	11'-0"
b	18	1/2"	22'-9"
b	18	1/2"	24'-3"
b2	24	1/2"	21'-9"
h	10	1/2"	8'-3"
h	12	1/2"	13'-0"
h1	12	1/2"	11'-3"
h2	2	1/2"	8'-6"
h3	2	1/2"	7'-3"
h5	4	1/2"	4'-0"
v	82	1/2"	5'-0"
v	12	1/2"	6'-3"
v	10	1/2"	6'-9"
v	10	1/2"	7'-3"
v4	12	1/2"	8'-3"
w	4	1/2"	9'-6"
w	4	1/2"	11'-3"
z	44	1/2"	3'-3"
Class X concrete cu yds 39.4			
Reinforcing Steel Lbs 6070			

- one long wing
- 6-h1
- 1-h3
- 1-h5
- 3-v1
- 3-v2
- 3-v3
- 3-v4
- one short wing
- 6-h2
- 1-h4
- 1-h5
- 3-v1
- 2-v2
- 2-v3
- 3-v4

STANDARD: COMPUTED -
CHECKED -
DRAWN - MLEMD
CHECKED - J.A. Taylor
SPECIAL: ASSEMBLED - MEL
CHECKED - L.P.G.

DESIGNED -
REVISED -
DRAWN -
CHECKED -
ASSEMBLED -
CHECKED -

APPROVED: *[Signature]*
CLASSIFIED ENGINEER

Class X concrete shall be used throughout.
All reinforcing steel shall be wired securely in place before the concrete is poured.

Note - culvert is designed for 3-1 slopes.

SPECIAL CULVERT DESIGN
S.A. AT 7-2 AT SEC 123-NRS
EDGAR CO
STA. 126+54
025-8009
Standard 1351

FOR INFORMATION ONLY