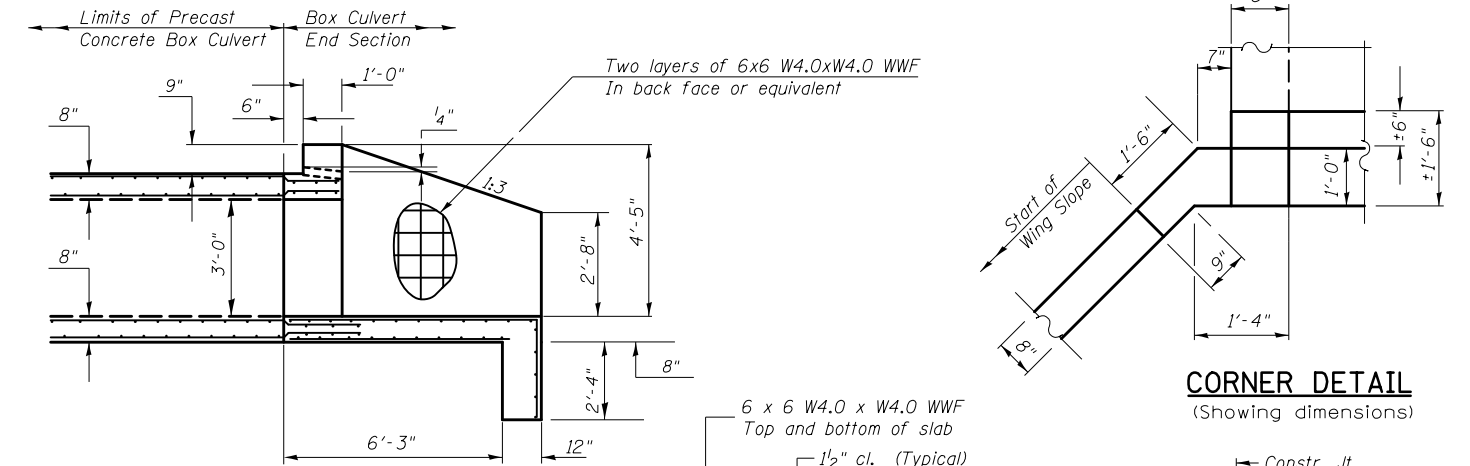
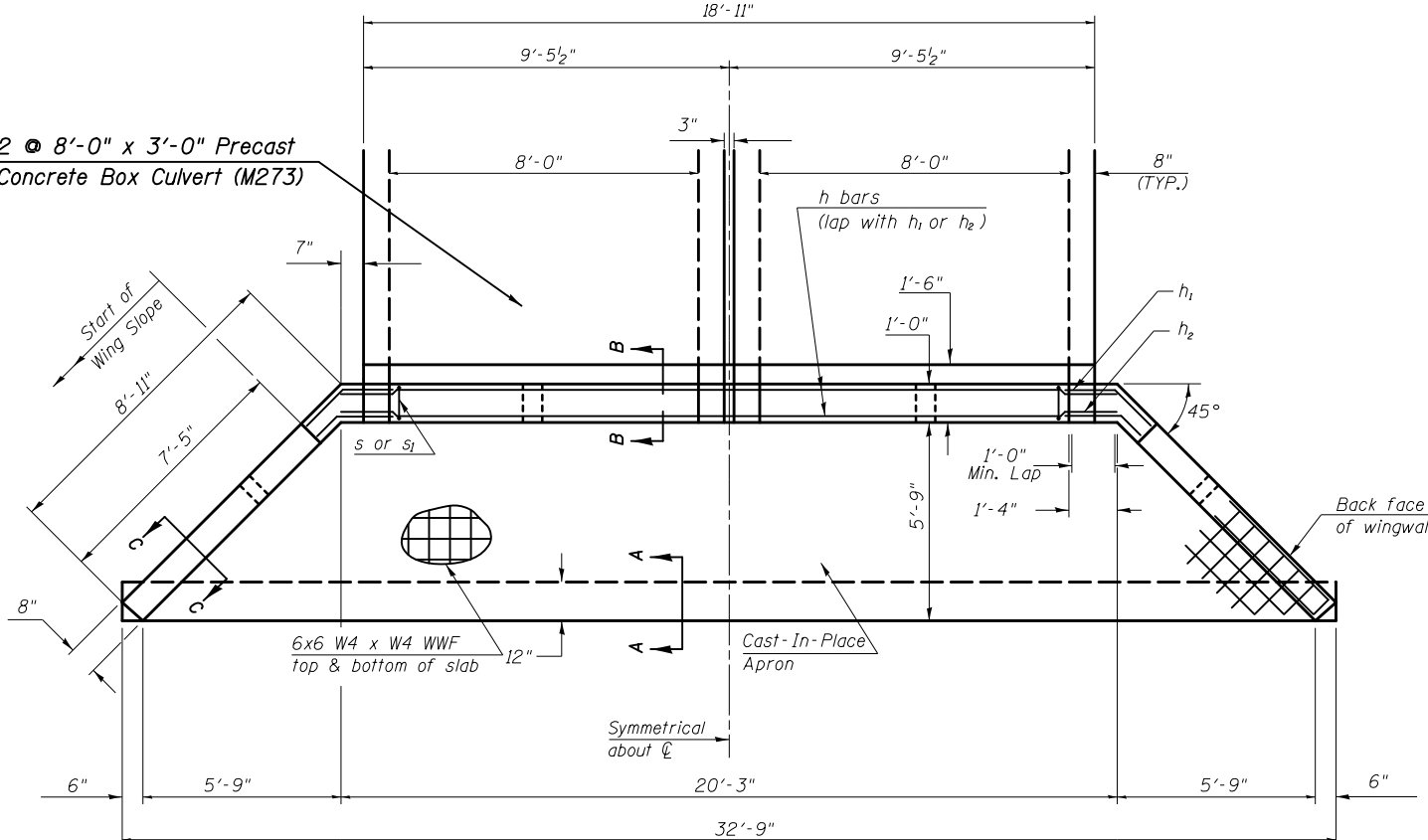


**END ELEVATION**

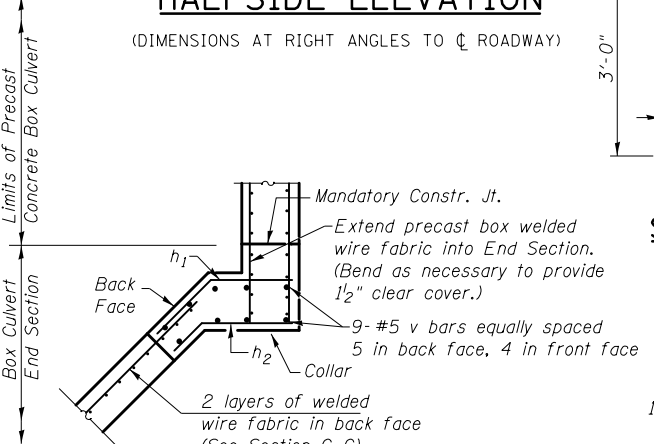


**HALFSIDE ELEVATION**  
(DIMENSIONS AT RIGHT ANGLES TO  $\phi$  ROADWAY)

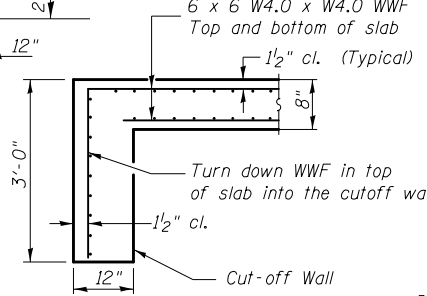
**CORNER DETAIL**  
(Showing dimensions)



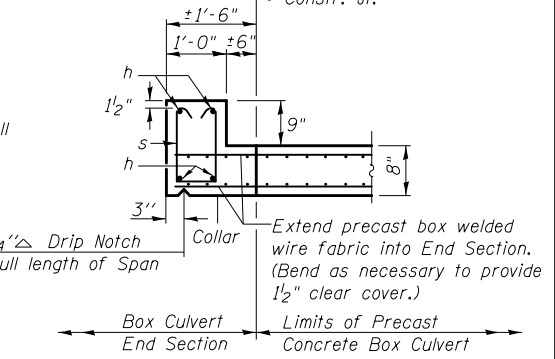
**PLAN**



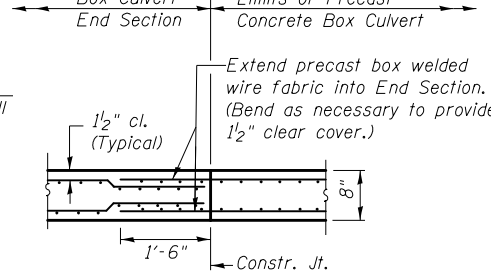
**SECTION D-D**  
(Showing reinforcement)



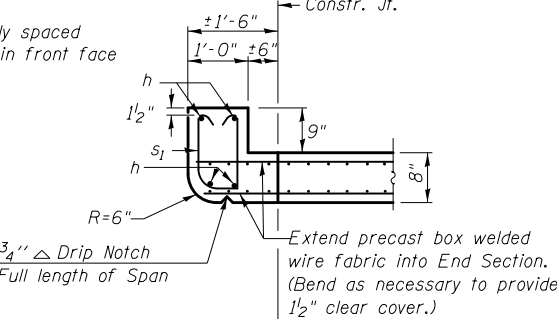
**SECTION A-A**



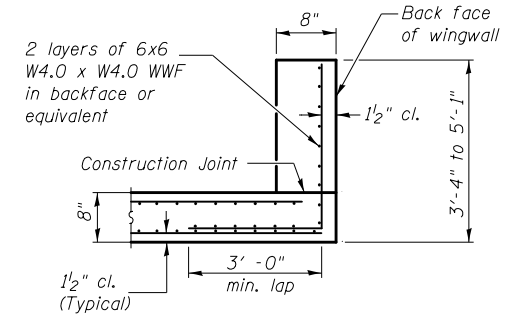
**SECTION F-F**  
TOP SLAB / HEADWALL DOWNSTREAM END



**SECTION B-B**  
BOTTOM SLAB



**SECTION F-F**  
TOP SLAB / HEADWALL UPSTREAM END

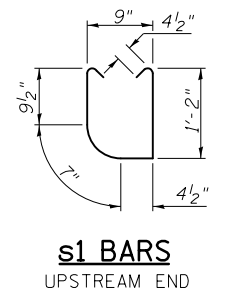


**SECTION C-C**  
WINGWALLS

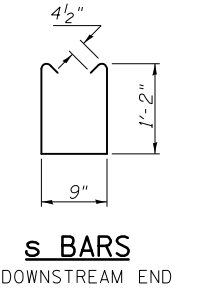
**BILL OF MATERIAL**

For Information Only  
(One End Section)

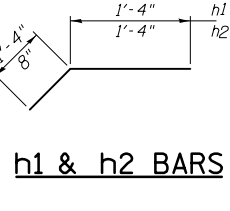
Bar	No.	Size	Length	Shape	
h	4	#6	20'-0"	—	
h <sub>1</sub>	10	#4	2'-8"	—	
h <sub>2</sub>	10	#4	2'-0"	—	
h <sub>3</sub>	5	#4	3'-10"	—	
s or s <sub>1</sub>	19	#4	3'-10"	—	
v	21	#5	4'-10"	—	
Item				Unit	Total
Class SI Concrete				Cu. Yd.	11.2
Reinforcement Bars				Pound	319.0
Welded Wire Fabric				Sq. Ft.	716.8



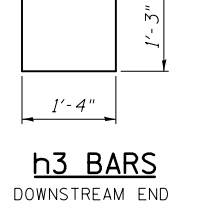
**s1 BARS**  
UPSTREAM END



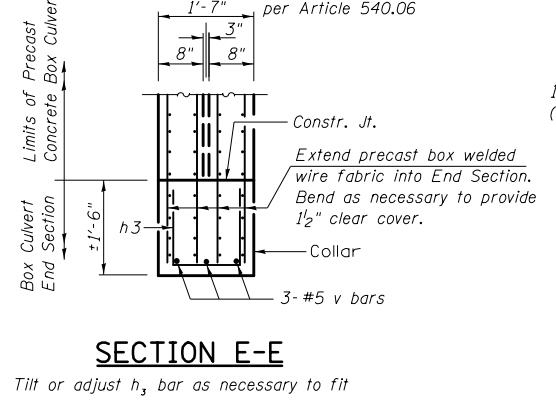
**s BARS**  
DOWNSTREAM END



**h1 & h2 BARS**  
DOWNSTREAM END



**h3 BARS**  
DOWNSTREAM END



**SECTION E-E**

Tilt or adjust h<sub>3</sub> bar as necessary to fit

**END SECTION DETAILS**  
**DOUBLE 8'x3' PRECAST BOX CULVERT**  
**F.A.P. ROUTE 749 - SECTION 14BR,14CR,123CR**  
**STATION 513+80.00 S.N. 023-8065**  
**CULVERT NO. 3**

FILE NAME =	USER NAME = keysrb	DESIGNED -	REVISED -
ei:\pw_work\p1dot\keysrb\0104347\057068-sht-details.dgn		DRAWN -	REVISED -
		CHECKED -	REVISED -
		DATE -	REVISED -

**STATE OF ILLINOIS**  
**DEPARTMENT OF TRANSPORTATION**

**BOX CULVERT END SECTION DETAILS**  
**PROPOSED CULVERT NO. 3 - S.N. 023-8065**

SCALE: SHEET NO. 2 OF 4 SHEETS STA. TO STA.

F.A.P. RTE.	SECTION	COUNTY	TOTAL SHEETS	SHEET NO.
749	14BR,14CR,123CR	EDGAR	115	31
CONTRACT NO. 70618				
ILLINOIS FED. AID PROJECT				