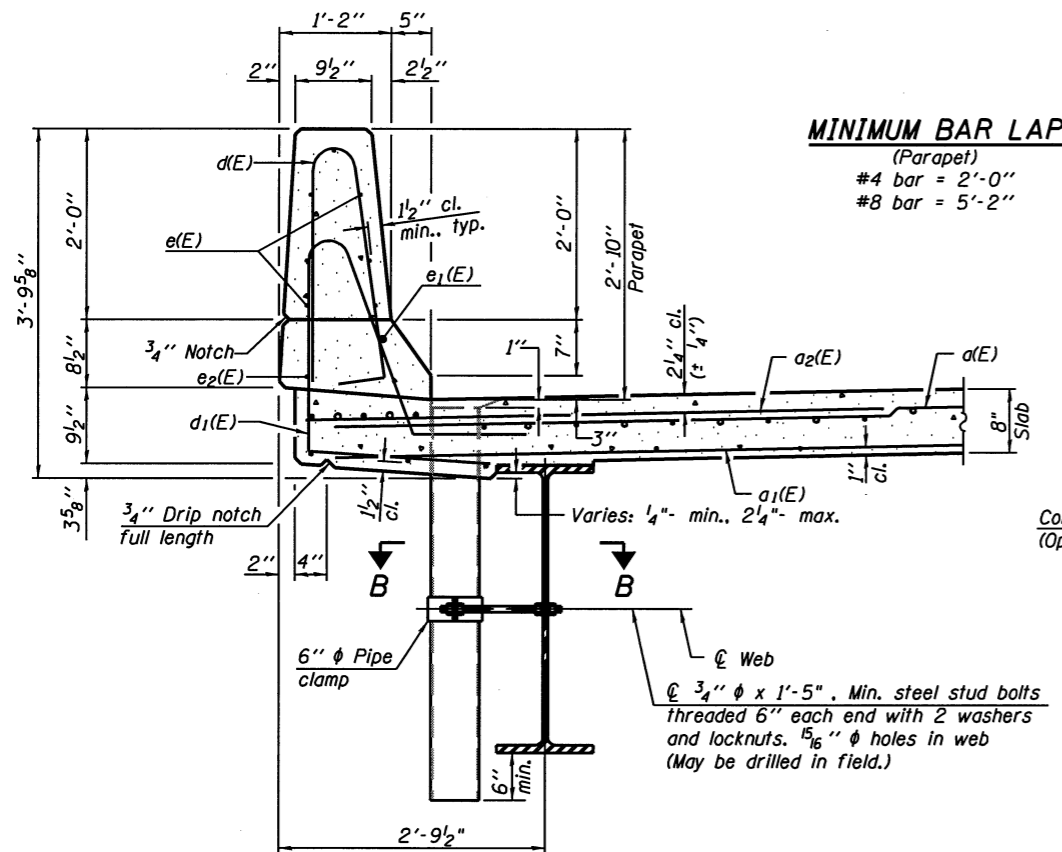
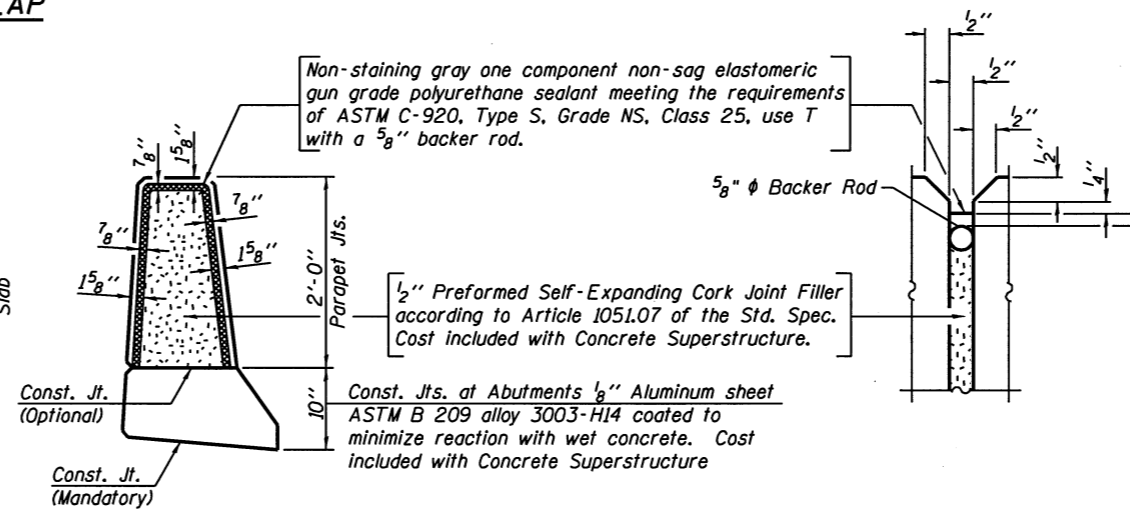


INSIDE ELEVATION OF PARAPET



MINIMUM BAR LAP
(Parapet)
#4 bar = 2'-0"
#8 bar = 5'-2"



PARAPET JOINT DETAILS

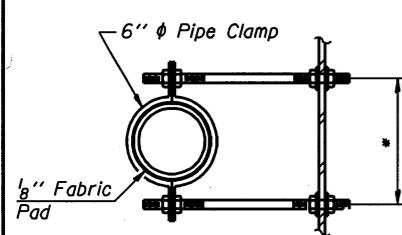
Notes:
Floor drains need not be painted.
Fiberglass pipe shall conform to ASTM D 2996, with short-time rupture strength hoop tensile stress of 30,000 p.s.i. minimum.
Galvanize clamping device according to AASHTO M232. Cost of clamping device and inserts is included with Floor Drains.

SUPERSTRUCTURE BILL OF MATERIAL

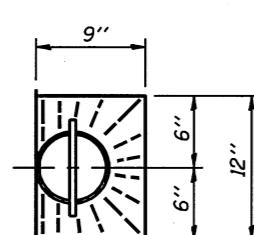
Bar	No.	Size	Length	Shape
a(E)	120	#5	34'-2"	—
a1(E)	84	#5	33'-2"	—
a2(E)	238	#6	6'-6"	—
a3(E)	4	#5	36'-4"	—
b(E)	152	#5	19'-5"	—
b1(E)	93	#5	25'-0"	—
d(E)	154	#5	5'-7"	⌒
d1(E)	154	#5	7'-5"	⌒
e(E)	56	#4	17'-3"	—
e1(E)	4	#8	37'-7"	—
e2(E)	6	#4	24'-8"	—
m(E)	10	#6	37'-1"	—
m1(E)	24	#6	9'-11"	—
m2(E)	10	#6	6'-0"	—
m3(E)	4	#6	2'-9"	—
s(E)	72	#5	5'-5"	⌒
s1(E)	62	#4	8'-8"	⌒
v(E)	70	#5	3'-10"	⌒
Reinforcement Bars, Epoxy Coated	Pound		20,470	
Concrete Superstructure	Cu. Yds.		101.3	
Bar Splicers	Each		72	

Bars indicated thus 1 x 2-#8 etc. indicates 1 line of bars with 2 lengths per line.

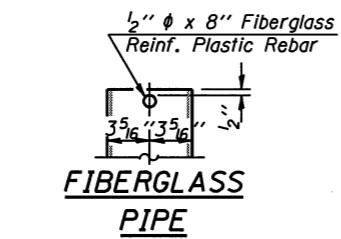
SECTION THRU PARAPET



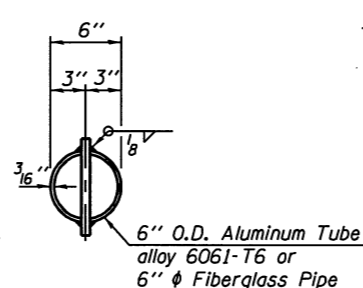
SECTION B-B
*Dimension as required by Pipe Clamp



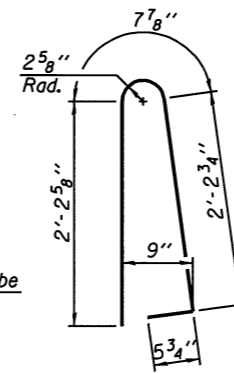
TOP PLAN



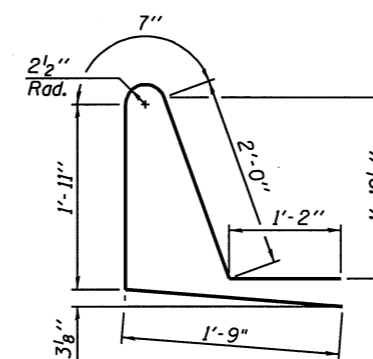
ALUMINUM TUBE
TOP PLAN
(Showing Aluminum Tube)



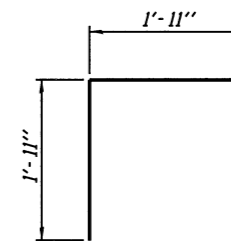
TOP PLAN
(Showing Aluminum Tube)



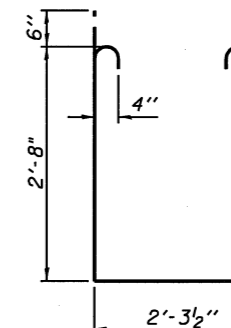
BAR d(E)



BAR d1(E)



BAR s(E)



BAR s1(E)

BAR v(E)

BLANK, WESSELINK, COOK & ASSOCIATES DECATUR, ILLINOIS ENGINEERS - CONSULTANTS DESIGN FIRM NO. 184000894

STATE OF ILLINOIS
DEPARTMENT OF TRANSPORTATION

SUPERSTRUCTURE DETAILS
STRUCTURE NO. 023-0034

F.A.P. RTE.	SECTION	COUNTY	TOTAL SHEETS	SHEET NO.
749	14BR	EDGAR	115	48
				CONTRACT NO. 70618
ILLINOIS FED. AID PROJECT				

SHEET NO. 8 OF 21 SHEETS