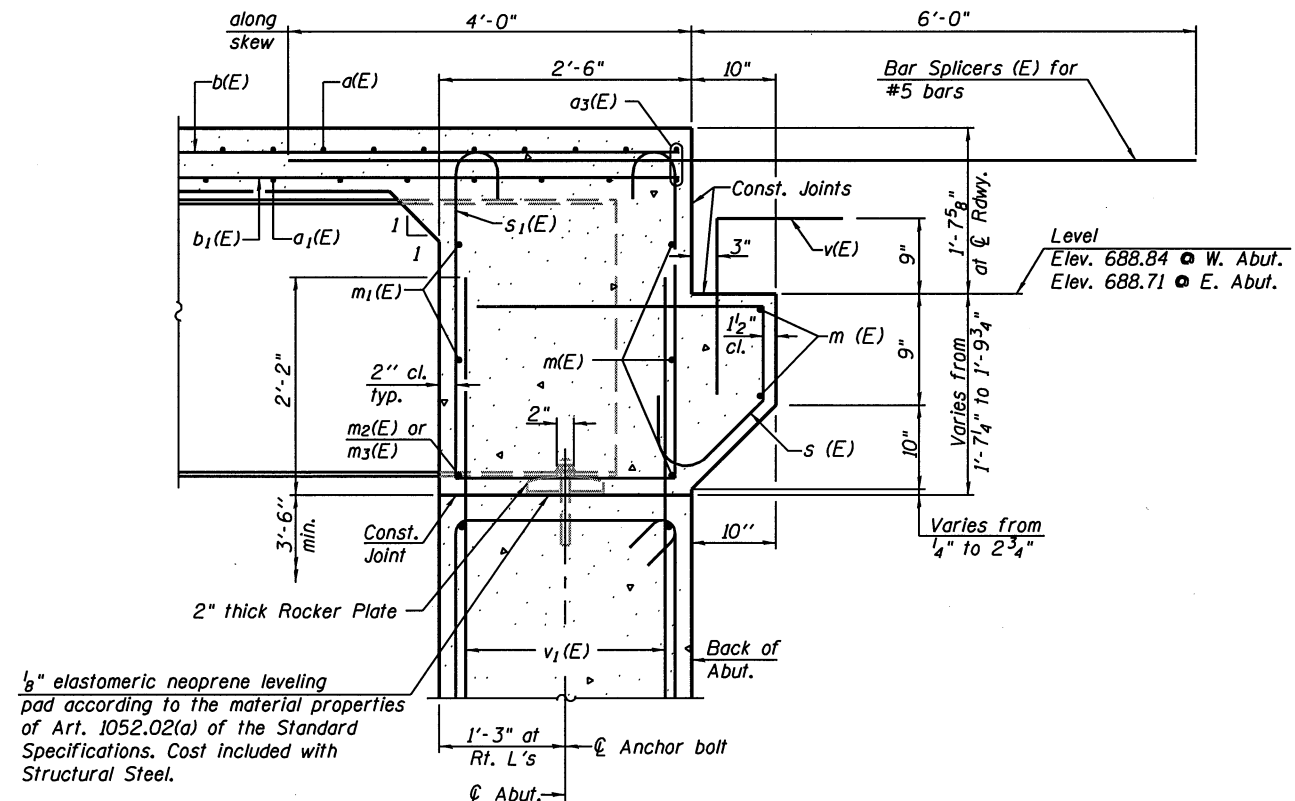


DIAPHRAGM ELEVATION AT ABUTMENT

Notes:
 Reinforcement bars in diaphragm are billed with superstructure on sheet 8 of 21.
 Concrete in diaphragm is included with Concrete Superstructure on sheet 8 of 21.
 For details of bars s(E) & s₁(E) see sheet 8 of 21.
 The s(E) and s₁(E) bars shall be placed parallel to the beams. Spacing for these bars shall be at right angles to the beams.

MIN. BAR LAP
 #6 bar = 3'-4"



SECTION A-A
 Dimensions at right angles to abutment, except as shown.

| | | | |
|--------------|-------------|----------------|-----------|
| FILE NAME * | USER NAME * | DESIGNED - PBB | REVISED - |
| | | CHECKED - | REVISED - |
| PLOT SCALE * | | DRAWN - RJC | REVISED - |
| PLOT DATE * | | CHECKED - | REVISED - |

STATE OF ILLINOIS
DEPARTMENT OF TRANSPORTATION

INTEGRAL ABUTMENT DIAPHRAGM DETAILS
STRUCTURE NO. 023-0034
 SHEET NO. 9 OF 21 SHEETS

| F.A.P. RTE. | SECTION | COUNTY | TOTAL SHEETS | SHEET NO. |
|---------------------------|---------|--------|--------------|--------------------|
| 749 | 14BR | EDGAR | 115 | 49 |
| | | | | CONTRACT NO. 70618 |
| ILLINOIS FED. AID PROJECT | | | | |