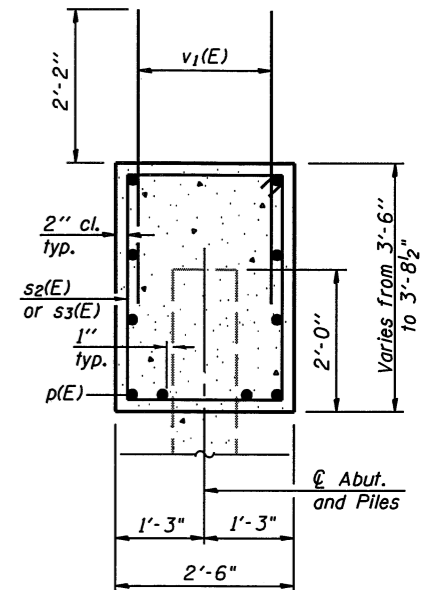
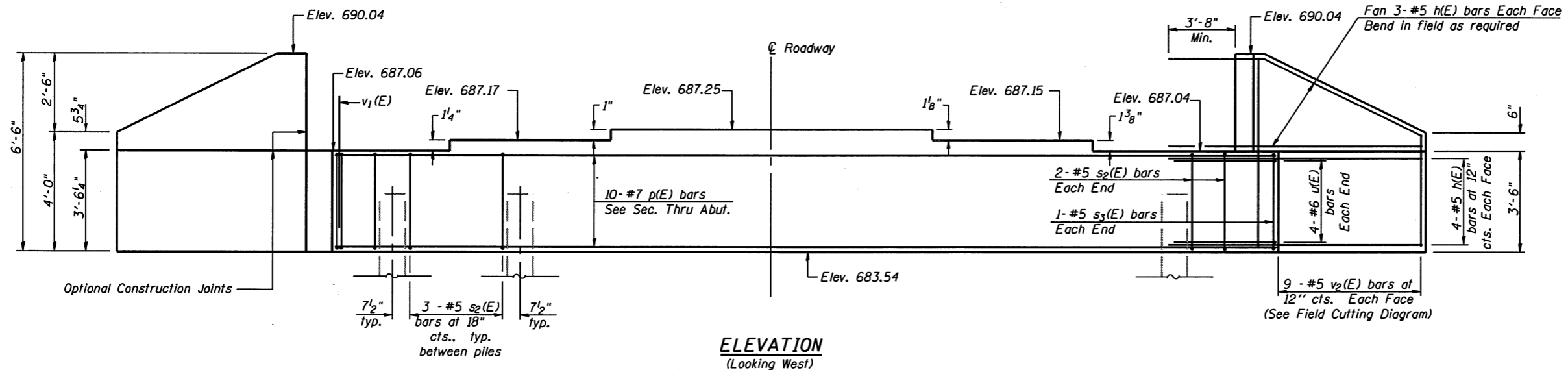


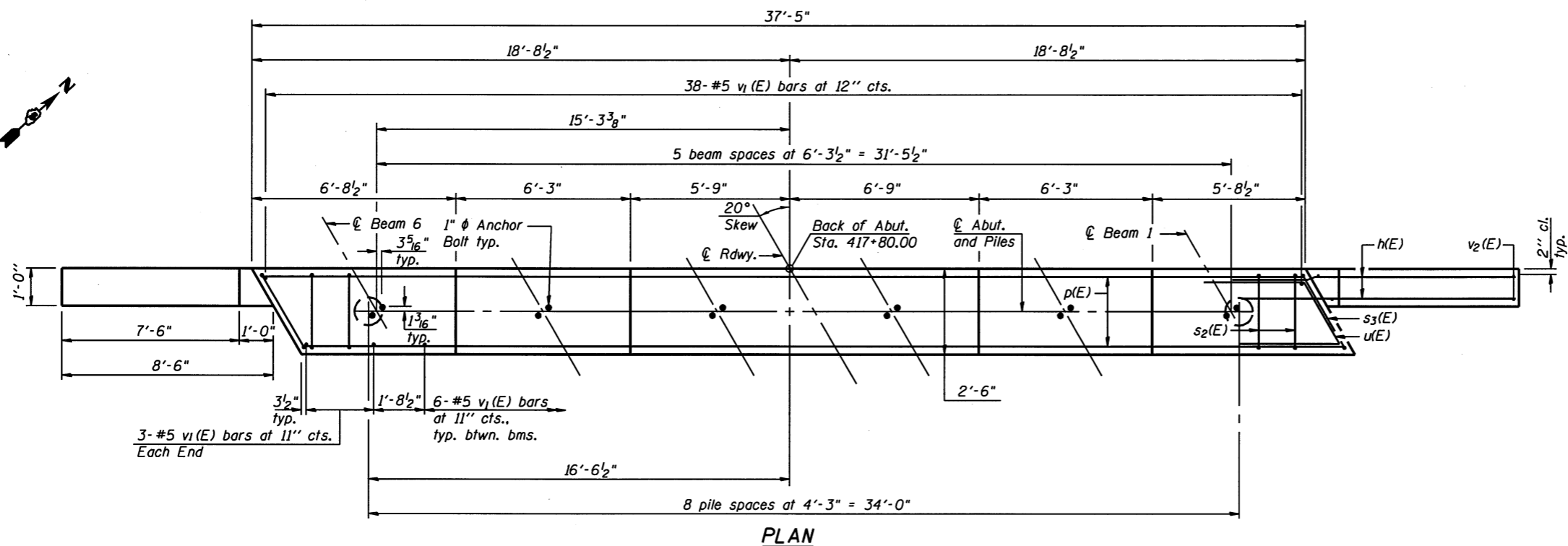
Notes:  
Four steps monolithically with cap.



**BILL OF MATERIAL**

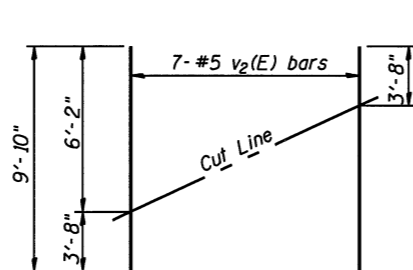
Bar	No.	Size	Length	Shape
h(E)	32	#5	12'-5"	—
p(E)	10	#7	37'-0"	—
s2(E)	28	#5	11'-7"	□
s3(E)	2	#5	11'-11"	□
u(E)	8	#6	10'-3"	⌒
v1(E)	74	#5	4'-4"	—
v2(E)	18	#5	9'-10"	—
Structure Excavation		Cu. Yd.	106	
Concrete Structures		Cu. Yd.	15.9	
Reinforcement Bars, Epoxy Coated		Pound	2,180	
Furnishing Metal Shell Piles 12" x 0.25"		Foot	192	
Driving Piles		Foot	192	
Test Pile Metal Shells		Each	1	

For details of Bar Splicers, see sheet 16 of 21.



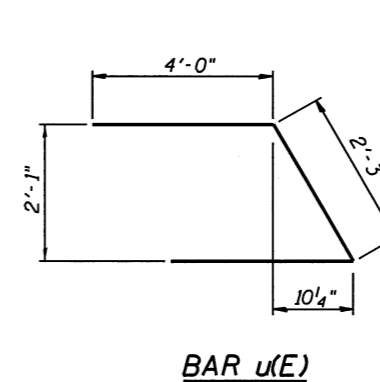
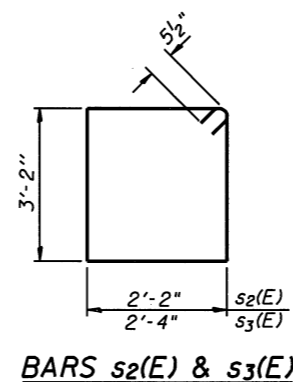
**PILE DATA**

Type: Metal Shell 12" w/ 0.25" walls  
Nominal Required Bearing: 240k  
Factored Resistance Available: 132k  
Est. Length: 24 ft  
No. Production Piles: 8  
No. Test Piles: 1



**FIELD CUTTING DIAGRAM**

Order v2(E) full length. Cut as shown and use remainder of bars in opposite face.



BLANK, WESSELINK, COOK & ASSOCIATES

DECATUR, ILLINOIS

ENGINEERS - CONSULTANTS

DESIGN FIRM NO. 184000894

STATE OF ILLINOIS  
DEPARTMENT OF TRANSPORTATION

WEST ABUTMENT DETAILS  
STRUCTURE NO. 023-0034

SHEET NO. 14 OF 21 SHEETS

F.A.P. RTE.	SECTION	COUNTY	TOTAL SHEETS	SHEET NO.
749	14BR	EDGAR	115	54
				CONTRACT NO. 70618
ILLINOIS FED. AID PROJECT				