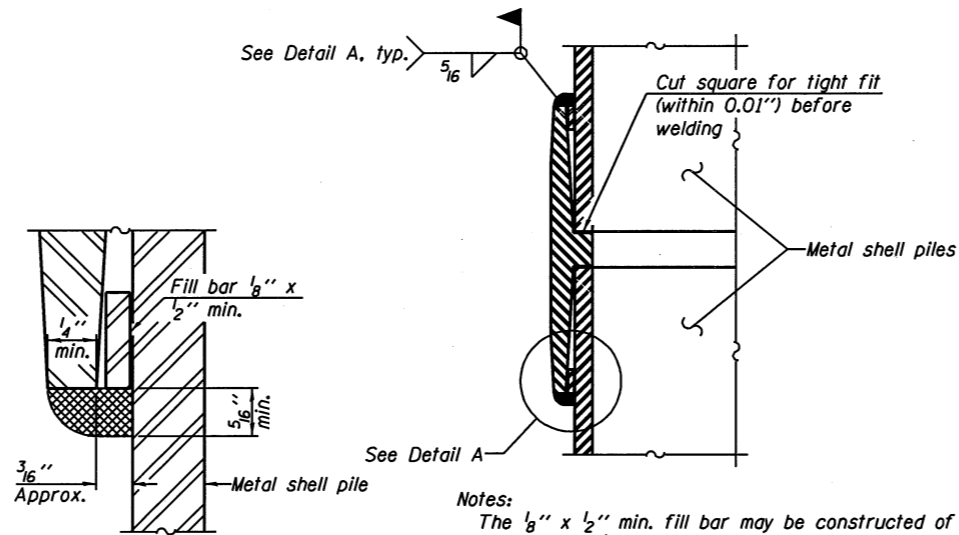


METAL SHELL PILE TABLE

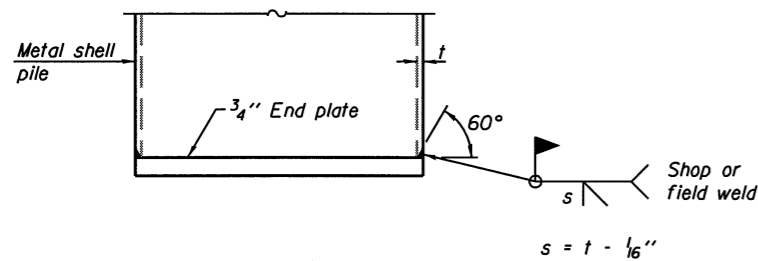
Designation and outside diameter	Wall thickness t	Weight per foot (Lbs./ft.)	Inside volume (yd. ³ /ft.)
PP12	0.179"	22.60	0.0274
PP12	0.250"	31.37	0.0267
PP14	0.250"	36.71	0.0368
PP14	0.312"	45.61	0.0361



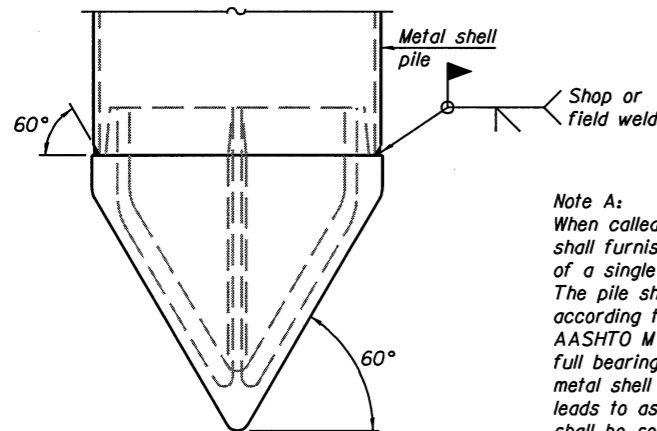
DETAIL A

Notes:
 The 1/8" x 1/2" min. fill bar may be constructed of 2 bars with a 1/8" max. gap between them.
 Pile segments shall be driven to solid contact with splicer before welding.

WELDED COMMERCIAL SPLICE



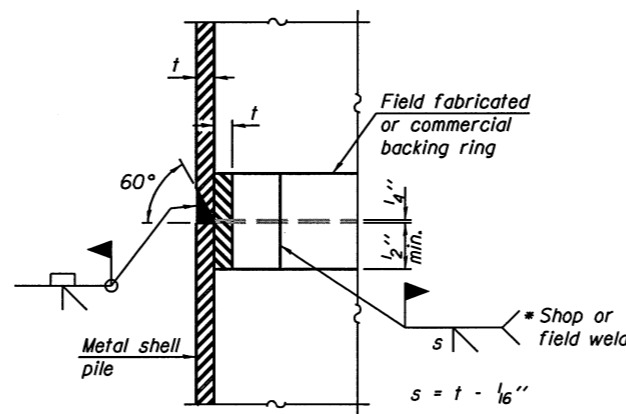
END PLATE ATTACHMENT



METAL SHELL PILE SHOE ATTACHMENT

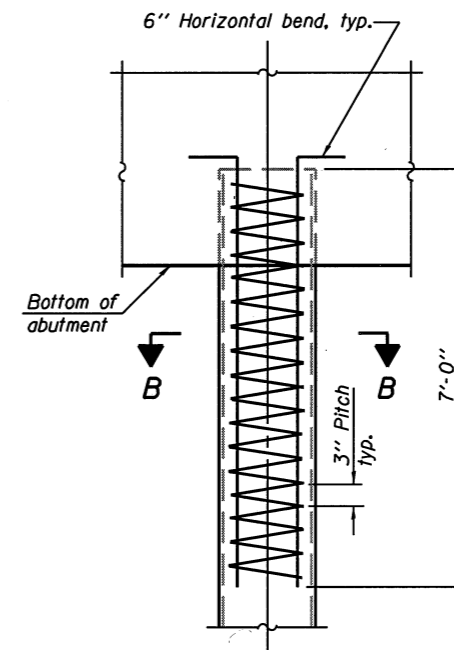
(See Note A)

Note A:
 When called for on the plans, the Contractor shall furnish metal shell pile shoes consisting of a single piece conical pile point as shown. The pile shoes shall be cast in one piece steel according to either ASTM A 148 Grade 90-60 or AASHTO M 103 Grade 65-35 and shall provide full bearing over the full circumference of the metal shell pile. The pile shoe shall have tapered leads to assure proper alignment and fitting and shall be secured to the pile with a circumferential weld.

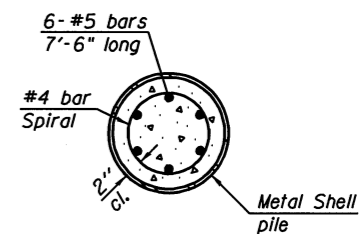


COMPLETE PENETRATION WELD SPLICE

* Field fabricated backing ring may be made from pile shell by removing segment to allow reducing circumference and vertically rejoin with partial joint penetration weld.



ELEVATION



SECTION B-B

F-MS

7-1-10

BLANK, WESSELINK, COOK & ASSOCIATES

DECATUR, ILLINOIS

ENGINEERS - CONSULTANTS

DESIGN FIRM NO. 184000894

Note:

The metal shell piles shall be according to ASTM A 252 Grade 3.

STATE OF ILLINOIS
 DEPARTMENT OF TRANSPORTATION

METAL SHELL PILE DETAILS
 STRUCTURE NO.

SHEET NO. 17 OF 21 SHEETS

F.A.P. RTE.	SECTION	COUNTY	TOTAL SHEETS	SHEET NO.
749	14BR	EDGAR	115	57
			CONTRACT NO. 70618	

ILLINOIS FED. AID PROJECT

FILE NAME	USER NAME	DESIGNED	REVISIONS
		PBB	
		CHECKED	
		RJC	
		CHECKED	