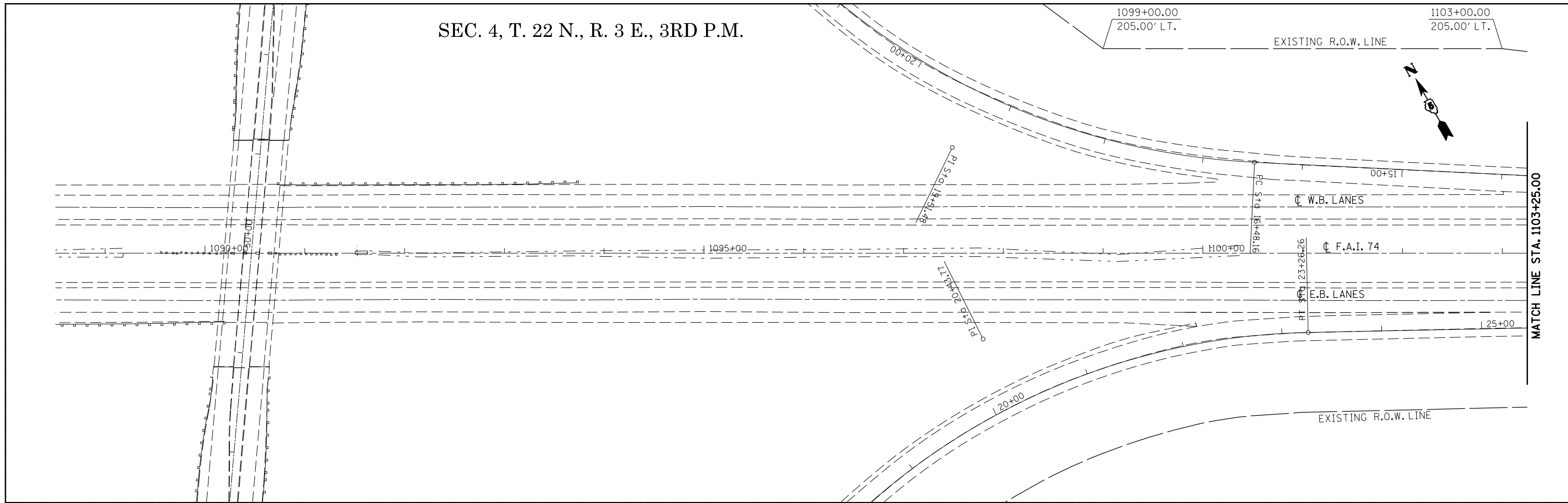
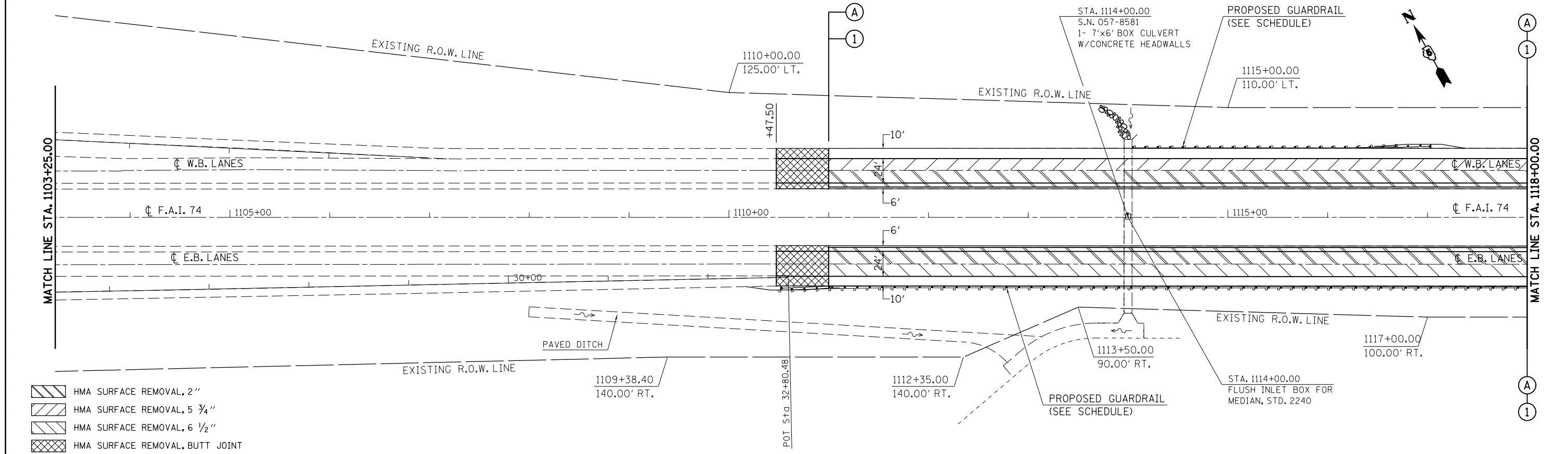


SEC. 4, T. 22 N., R. 3 E., 3RD P.M.



SEC. 4, T. 22 N., R. 3 E., 3RD P.M.



- HMA SURFACE REMOVAL, 2"
- HMA SURFACE REMOVAL, 5 3/4"
- HMA SURFACE REMOVAL, 6 1/2"
- HMA SURFACE REMOVAL, BUTT JOINT

FILE NAME =	USER NAME = ppersonbr	DESIGNED - GAE	REVISED -
ei:\pw\work\p\midot\ppersonbr\d0184863\0570648-sh1-plan.dgn		DRAWN - BBP	REVISED -
	PLOT SCALE = 100.0000' / 1in.	CHECKED -	REVISED -
	PLOT DATE = 8/26/2011	DATE - 08/26/10	REVISED -

STATE OF ILLINOIS
DEPARTMENT OF TRANSPORTATION

F.A.I. 74 (I-74)
PLAN SHEETS

SCALE: 1" = 50' SHEET NO. 1 OF 15 SHEETS STA. 1088+50.00 TO STA. 1118+00.00

F.A.I. RTE.	SECTION	COUNTY	TOTAL SHEETS	SHEET NO.
74	(57-23,57-24)RS-1	MCLEAN	175	39
CONTRACT NO. 70648				
ILLINOIS FED. AID PROJECT				