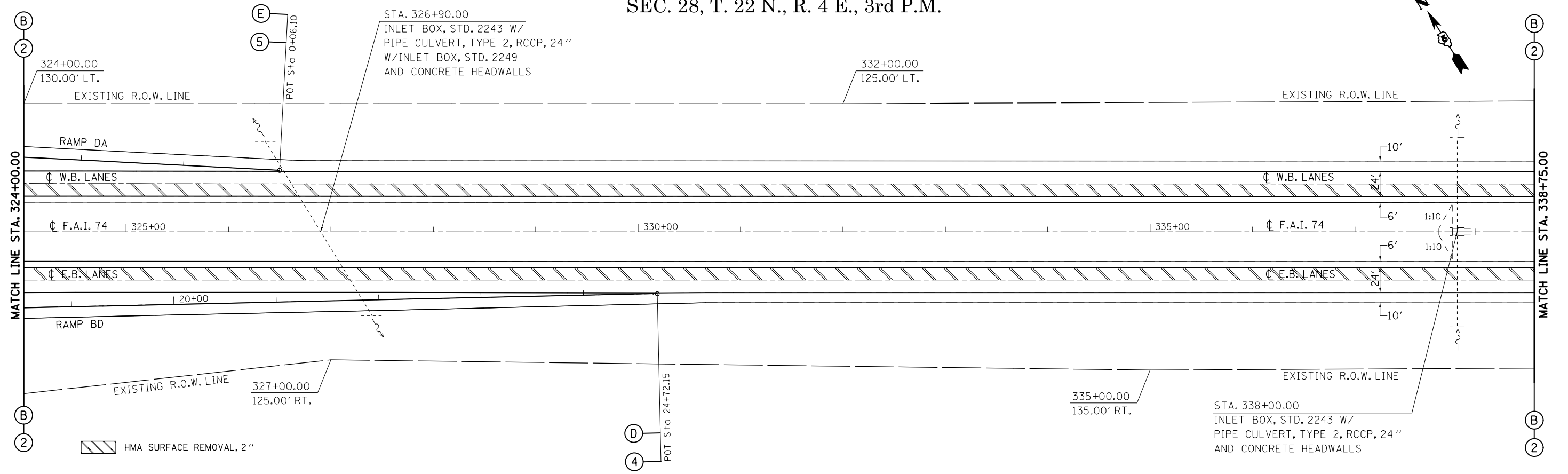
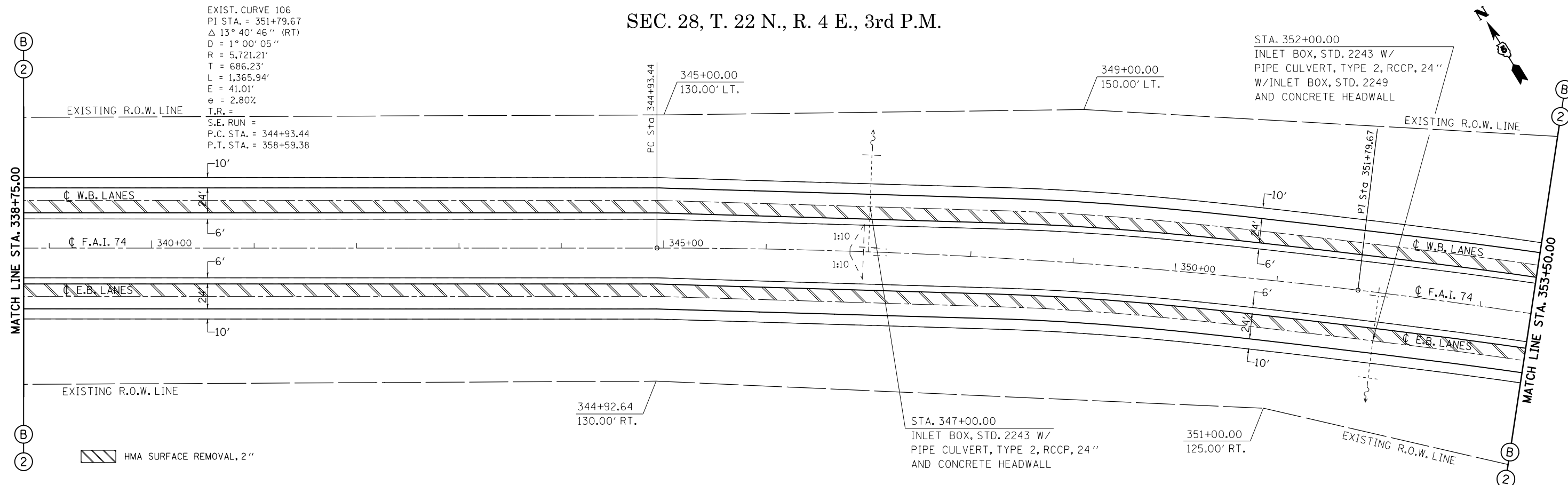


SEC. 28, T. 22 N., R. 4 E., 3rd P.M.



SEC. 28, T. 22 N., R. 4 E., 3rd P.M.



FILE NAME =	USER NAME = ppersonbr	DESIGNED - GAE	REVISED -	STATE OF ILLINOIS DEPARTMENT OF TRANSPORTATION	F.A.I. 74 (I-74) PLAN SHEETS		F.A.I. RTE. = 74	SECTION = (57-23,57-24)RS-1	COUNTY = MCLEAN	TOTAL SHEETS = 175	SHEET NO. = 52	
c:\pwork\pwork\personbr\d0184863\050648-sh1-plan.dgn		DRAWN - BBP	REVISED -		SCALE: 1" = 50'	SHEET NO. 14 OF 15 SHEETS	STA. 324+00.00 TO STA. 353+50.00	CONTRACT NO. 70648		ILLINOIS FED. AID PROJECT		
		CHECKED -	REVISED -									
		DATE - 08/26/10	REVISED -									