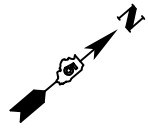
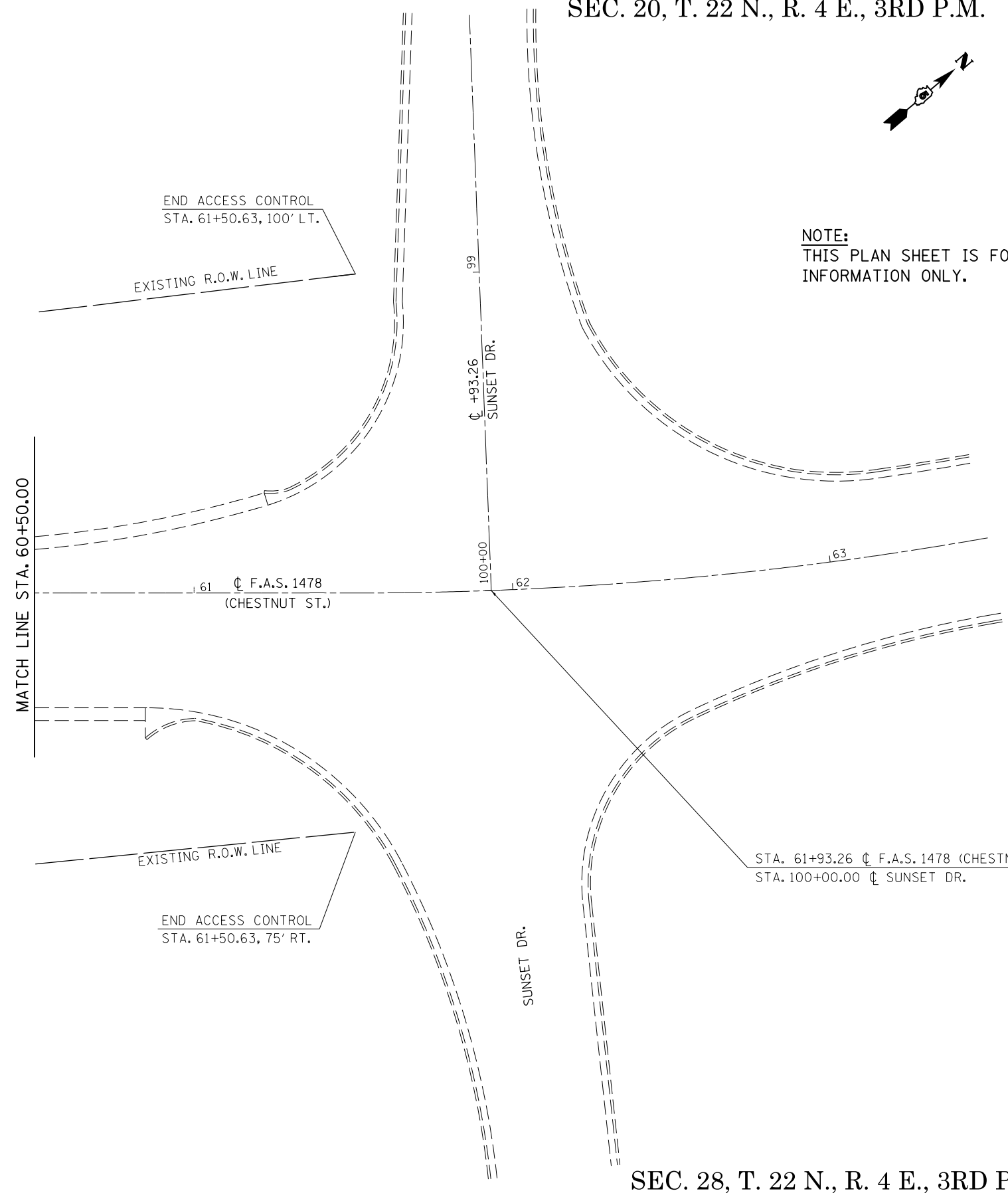


SEC. 20, T. 22 N., R. 4 E., 3RD P.M.



NOTE:
THIS PLAN SHEET IS FOR
INFORMATION ONLY.



STA. 61+93.26 ϕ F.A.S. 1478 (CHESTNUT ST.) =
STA. 100+00.00 ϕ SUNSET DR.

SEC. 28, T. 22 N., R. 4 E., 3RD P.M.

TYPICAL PAVEMENT MARKING LEGEND

- 1 4" (100) SKIP-DASH (YELLOW)
- 2 4" (100) SOLID (YELLOW)
- 3 12" (300) DIAGONAL (YELLOW)
- 4 4" (100) DOUBLE YELLOW (NARROW)
- 7 4" (100) SKIP-DASH (WHITE)
- 8 4" (100) SOLID (WHITE)
- 9 12" (300) DIAGONAL (WHITE)
- 10 6" (150) SOLID (WHITE)
- 11 24" (600) STOP BAR (WHITE)

FILE NAME = c:\pwork\work\pwork\personbr\d0184851\0570648-shit-pmk_FAS1478.dgn	USER NAME = personbr	DESIGNED - GAE	REVISED -	STATE OF ILLINOIS DEPARTMENT OF TRANSPORTATION	PAVEMENT MARKING PLAN SHEET F.A.S. 1478			F.A.I. RTE. = 74	SECTION = (57-23,57-24)RS-1	COUNTY = MCLEAN	TOTAL SHEETS = 175	SHEET NO. = 67
	PLOT SCALE = 40.0000' / in.	CHECKED -	REVISED -		SCALE: 1" = 20'	SHEET NO. 6 OF 6 SHEETS	STA. 60+50.00 TO STA. 63+50.00	CONTRACT NO. 70648 ILLINOIS FED. AID PROJECT				
PLOT DATE = 8/25/2011	DATE = 07/18/11	REVISED -	REVISED -									