



SEC 17, T3S, R3W, 3rd PM

CALENDAR CONSTRUCTION CO. INC.

PARCEL No.

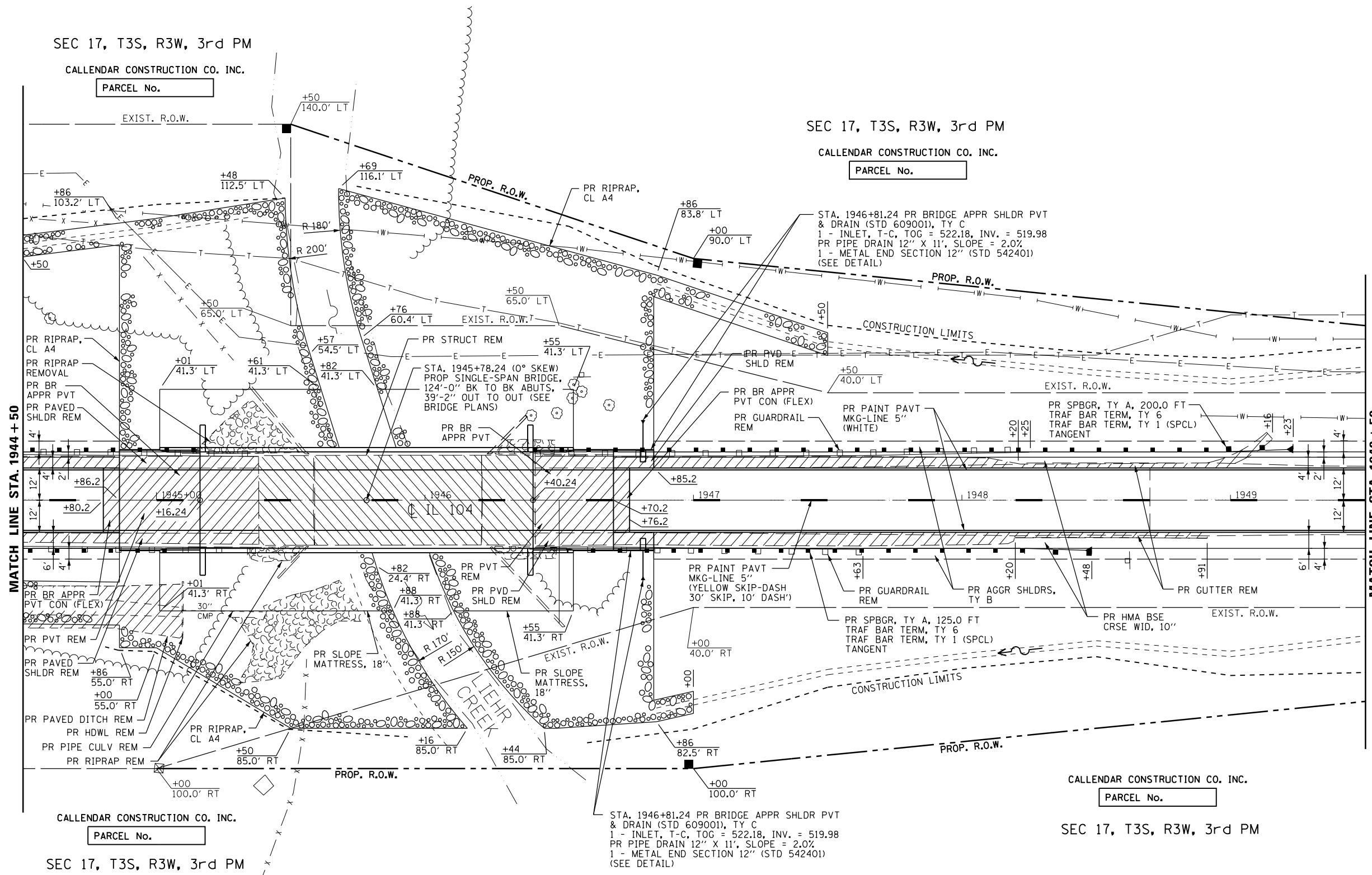
SEC 17, T3S, R3W, 3rd PM

CALENDAR CONSTRUCTION CO. INC.

PARCEL No.

MATCH LINE STA. 1944 + 50

MATCH LINE STA. 1949 + 50



CALENDAR CONSTRUCTION CO. INC.

PARCEL No.

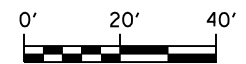
SEC 17, T3S, R3W, 3rd PM

CALENDAR CONSTRUCTION CO. INC.

PARCEL No.

SEC 17, T3S, R3W, 3rd PM

STA. 1946+81.24 PR BRIDGE APPR SHLDR PVT & DRAIN (STD 609001), TY C  
 1 - INLET, T-C, TOG = 522.18, INV. = 519.98  
 PR PIPE DRAIN 12" X 11", SLOPE = 2.0%  
 1 - METAL END SECTION 12" (STD 542401)  
 (SEE DETAIL)



USER NAME = sparksgw PLOT SCALE = 40.0000' / in. PLOT DATE = Sep-01-2011 08:59:30AM	DESIGNED -	REVISED -	<b>STATE OF ILLINOIS</b> <b>DEPARTMENT OF TRANSPORTATION</b>	<b>PLAN SHEET</b> <b>STA. 1944 + 50 TO STA. 1949 + 50</b>		F.A.P. RTE.	SECTION	COUNTY	TOTAL SHEETS	SHEET NO.
	DRAWN -	REVISED -				745	108B-2	PIKE	64	21
	CHECKED - JA	REVISED -				CONTRACT NO. 72981				
DATE - 6/13/11	REVISED -	SCALE:	SHEET NO.	OF SHEETS	STA.	TO STA.		FED. ROAD DIST. NO. 6 ILLINOIS FED. AID PROJECT		

FILE NAME = c:\pw\_work\pilot\sparksgw\d0280163\0672981-shr-pln\_02.dgn