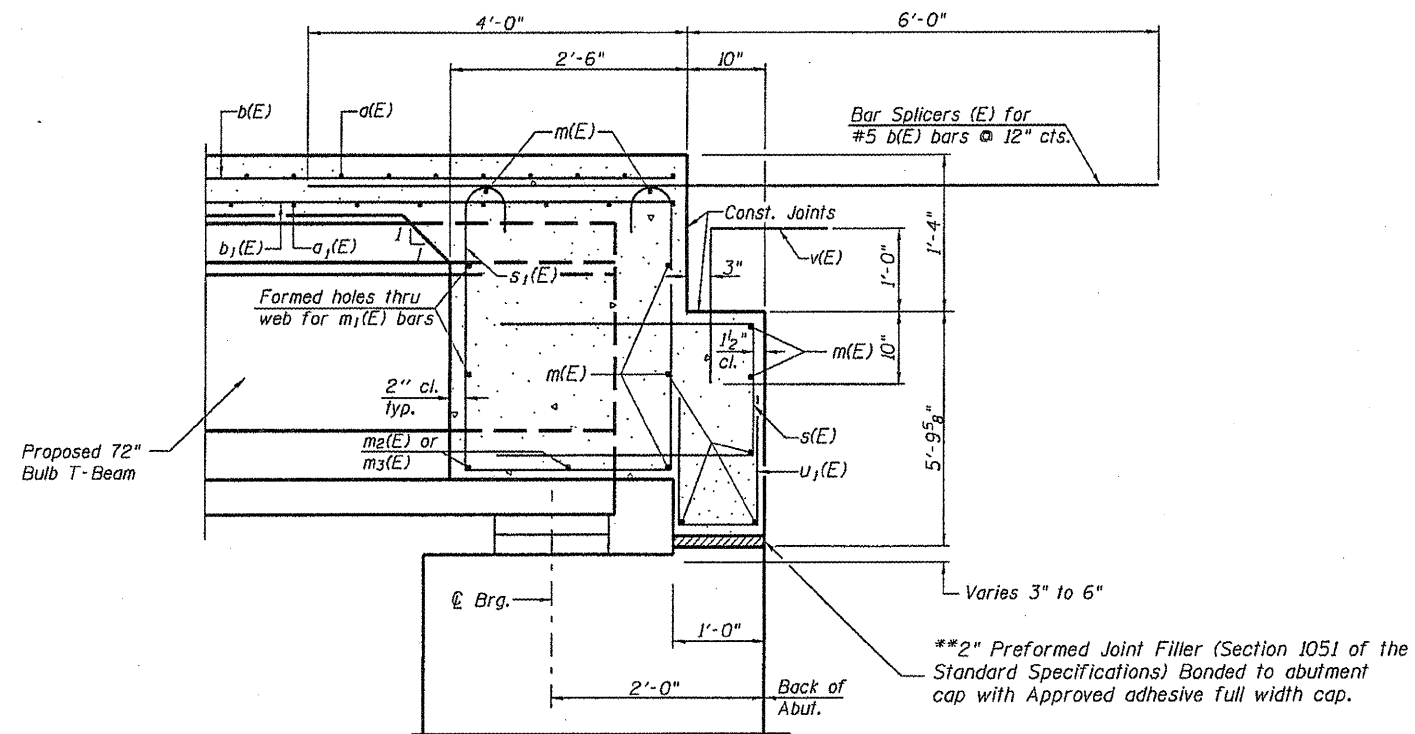


**DIAPHRAGM ELEVATION AT WEST ABUTMENT**  
(Looking West, East Abutment Similar)

**MIN. BAR LAP**  
#6 bar = 3'-4"

**Notes:**  
Reinforcement bars in diaphragm are billed with superstructure on sheet 9 of 22.  
Concrete in diaphragm is included with Concrete Superstructure on sheet 9 of 22.  
Concrete in backwall is included with Concrete Structures on sheet 9 of 22.  
For details of bars s(E), s1(E), v(E) & u1(E) see sheet 9 of 22.  
The s(E) and s1(E) bars shall be placed parallel to the beams.



**SECTION A-A**

**HE** **HOELSCHER ENGINEERING**  
Fairview Heights, IL  
Springfield, IL  
Champaign, IL

FILE NAME = IL104 over Liehr Creek.dgn	USER NAME =	DESIGNED - CMW	REVISED -	<b>STATE OF ILLINOIS DEPARTMENT OF TRANSPORTATION</b>	<b>DIAPHRAGM DETAILS</b> F.A.P.-745 (IL 104) OVER LIEHR CREEK - S.N. 075-0512	F.A.P. RTE.	SECTION	COUNTY	TOTAL SHEETS	SHEET NO.	
		CHECKED - SAL	REVISED -			745	108B-2	PIKE	64	34	
		DRAWN - TJW	REVISED -			CONTRACT NO. 72981					
		CHECKED - SAL	REVISED -			FED. RD. DIST. NO. 6 ILLINOIS FED. AID PROJECT					