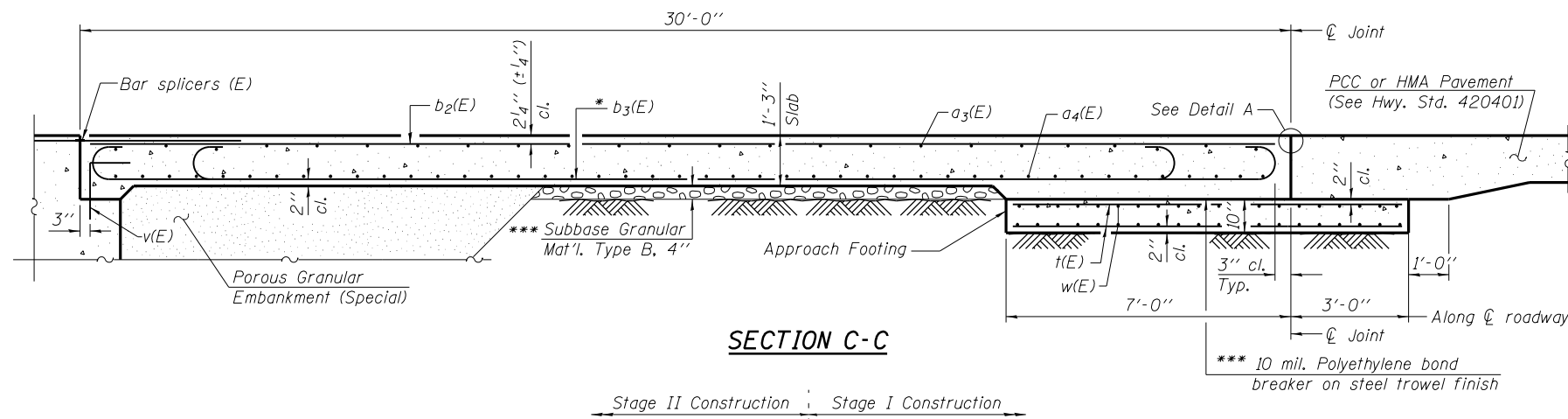
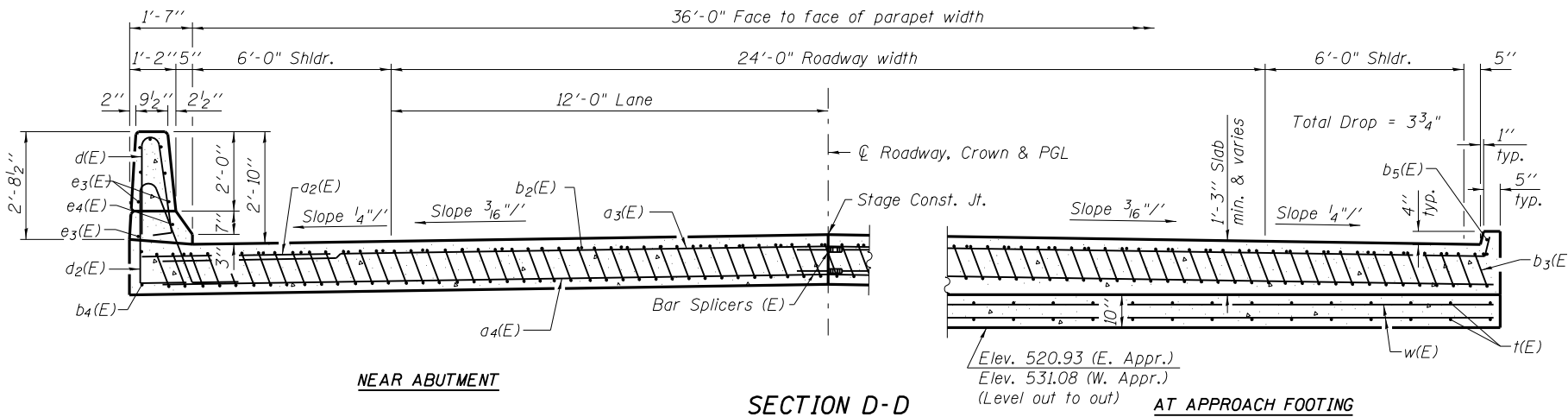


Notes:

See sheet 11 of 22 for Detail A and View B-B.
 Approach slab and parapet concrete shall be paid for as Concrete Superstructure.
 Approach footing concrete shall be paid for as Concrete Structures.
 Reinforcement shall be paid for as Reinforcement Bars, Epoxy Coated.
 For v(E) bar details, see sheet 9 of 22.
 The approach footing maximum applied service bearing pressure (Q_{max}) = 2.0 ksf.
 For bar splicer details, see sheet 19 of 22.
 Cost of excavation for approach footing included with Concrete Structures.
 For Porous Granular Embankment (Special) and drainage treatment details, see sheet 2 of 22.
 For additional parapet details, see sheet 9 of 22.



SECTION C-C

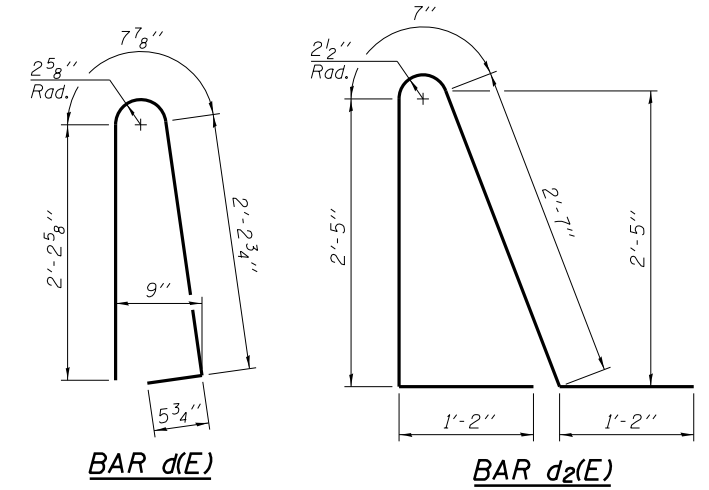


NEAR ABUTMENT

SECTION D-D

AT APPROACH FOOTING

(See Plan for dimensions not shown)

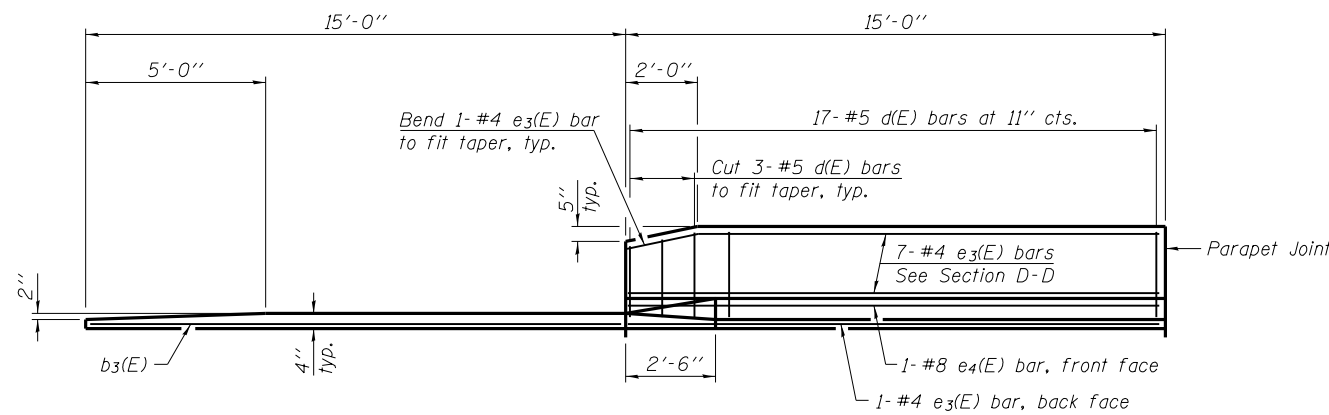


BAR d(E)

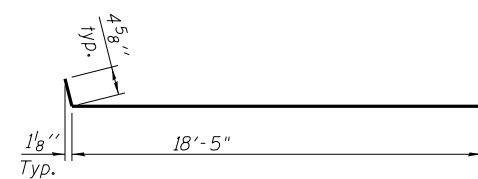
BAR d2(E)

* Tilt #9 b3(E) bars as required to maintain clearance.

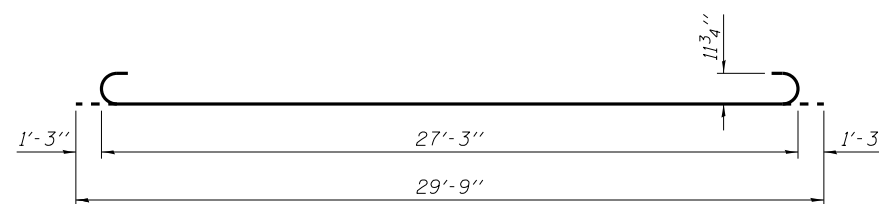
*** Cost included with Concrete Superstructure.



VIEW E-E



BAR a3(E)



BAR b3(E)

TWO APPROACHES
 BILL OF MATERIAL

Bar	No.	Size	Length	Shape
a2(E)	48	#6	6'-6"	—
a3(E)	100	#4	18'-10"	—
a4(E)	184	#5	18'-6"	—
b2(E)	64	#4	29'-8"	—
b3(E)	184	#9	29'-9"	—
b4(E)	4	#4	14'-8"	—
b5(E)	4	#4	14'-6"	—
d(E)	68	#5	5'-7"	—
d2(E)	68	#5	7'-11"	—
e3(E)	32	#4	14'-8"	—
e4(E)	4	#8	14'-8"	—
t(E)	160	#4	9'-8"	—
w(E)	160	#5	18'-9"	—
Concrete Superstructure		Cu. Yd.	126.0	
Concrete Structures		Cu. Yd.	12.2	
Reinforcement Bars, Epoxy Coated		Pound	30,830	
Bar Splicers		Each	222	

BA-0 7-1-10

FILE NAME = IL104 over Liehr Creek.dgn	USER NAME =	DESIGNED - CMW	REVISED -
		CHECKED - SAL	REVISED -
		DRAWN - TJW	REVISED -
		CHECKED - SAL	REVISED -

STATE OF ILLINOIS
 DEPARTMENT OF TRANSPORTATION

APPROACH SLAB DETAILS
 F.A.P.-745 (IL 104) OVER LIEHR CREEK - S.N. 075-0512

(Sheet 2 of 2)

SHEET NO. 12 OF 22 SHEETS

F.A.P. RTE.	SECTION	COUNTY	TOTAL SHEETS	SHEET NO.
745	108B-2	PIKE	64	36
CONTRACT NO. 72981				
FED. RD. DIST. NO. 6 ILLINOIS FED. AID PROJECT				