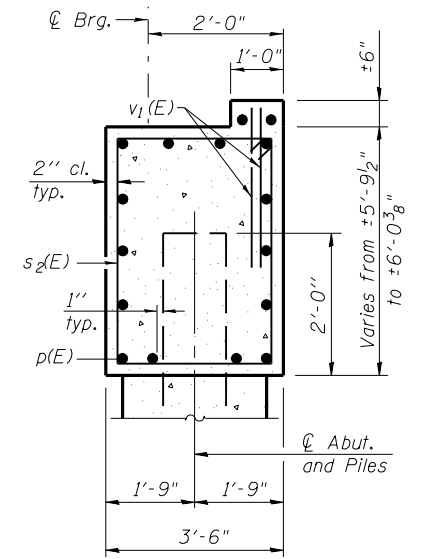
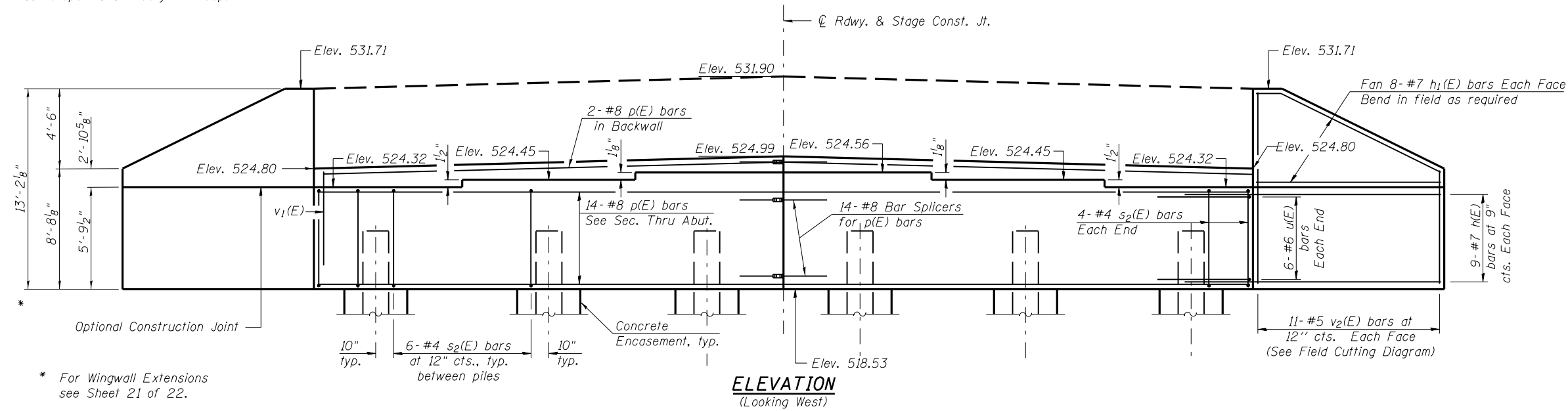


Notes:  
Pour steps monolithically with cap.



SEC. THRU ABUT.

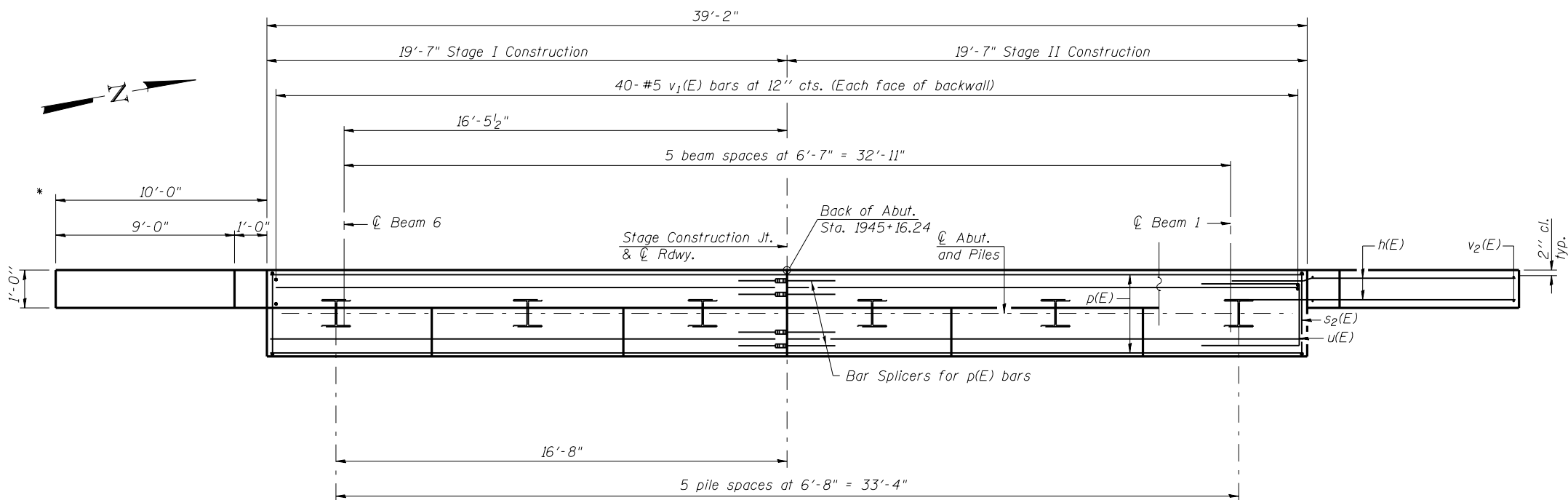
BILL OF MATERIAL

Bar	No.	Size	Length	Shape
h(E)	36	#7	12'-5"	—
h <sub>1</sub> (E)	32	#7	9'-10"	—
p(E)	32	#8	19'-4"	—
s <sub>2</sub> (E)	38	#4	18'-0"	□
u(E)	12	#6	10'-3"	—
v <sub>1</sub> (E)	80	#5	2'-0"	—
v <sub>2</sub> (E)	22	#5	21'-6"	—
** Structure Excavation		Cu. Yd.	221	
Concrete Structures		Cu. Yd.	38.8	
Reinforcement Bars, Epoxy Coated		Pound	4510	
Furnishing Steel Piles, HP14x89		Foot	123	
Setting Piles in Rock		Each	6	
Concrete Encasement		Cu. Yd.	3.3	
Bar Splicers		Each	16	

\*\* Quantity Includes subtotal for Wingwall Extensions.

For details of Bar Splicers, see sheet 19 of 22. For details of piles and Concrete Encasement, see sheet 20 of 22.

\*\* Quantity Includes subtotal for Wingwall Extensions.

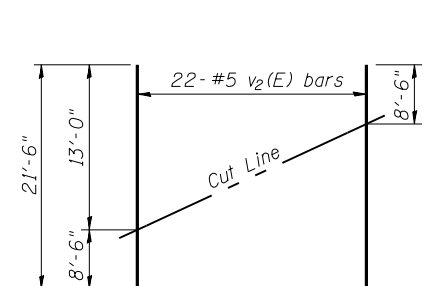


PLAN

PILE DATA

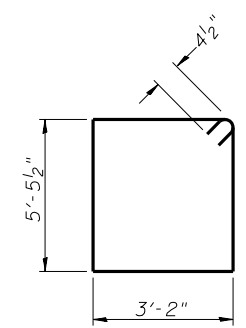
Type: Steel HP 14x89  
Nominal Required Bearing: Set in Rock  
Factored Resistance Available: 300 K  
Est. Length: 20'-6"  
No. Production Piles: 6  
No. Test Piles: 0  
Est. Top of Rock Elev. = 505.3  
Rock Socket Depth = 5'-0"  
Rock Socket Diameter = 30"

**HOELSCHER ENGINEERING**  
Fairview Heights, IL  
Springfield, IL  
Champaign, IL

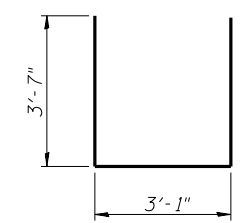


FIELD CUTTING DIAGRAM

Order v<sub>2</sub>(E) full length. Cut as shown and use remainder of bars in opposite face.



BAR s<sub>2</sub>(E)



BAR u(E)

FILE NAME = IL104 over Liehr Creek.dgn	USER NAME =	DESIGNED - CMW	REVISED -
		CHECKED - SAL	REVISED -
	PLOT SCALE =	DRAWN - TJW	REVISED -
	PLOT DATE =	CHECKED - SAL	REVISED -

STATE OF ILLINOIS  
DEPARTMENT OF TRANSPORTATION

WEST ABUTMENT DETAILS  
F.A.P.-745 (IL 104) OVER LIEHR CREEK - S.N. 075-0512

SHEET NO. 16 OF 22 SHEETS

F.A.P. RTE.	SECTION	COUNTY	TOTAL SHEETS	SHEET NO.
745	108B-2	PIKE	64	40
CONTRACT NO. 72981				
FED. RD. DIST. NO. 6 ILLINOIS FED. AID PROJECT				