

STATE OF ILLINOIS  
DEPARTMENT OF TRANSPORTATION  
DIVISION OF HIGHWAYS

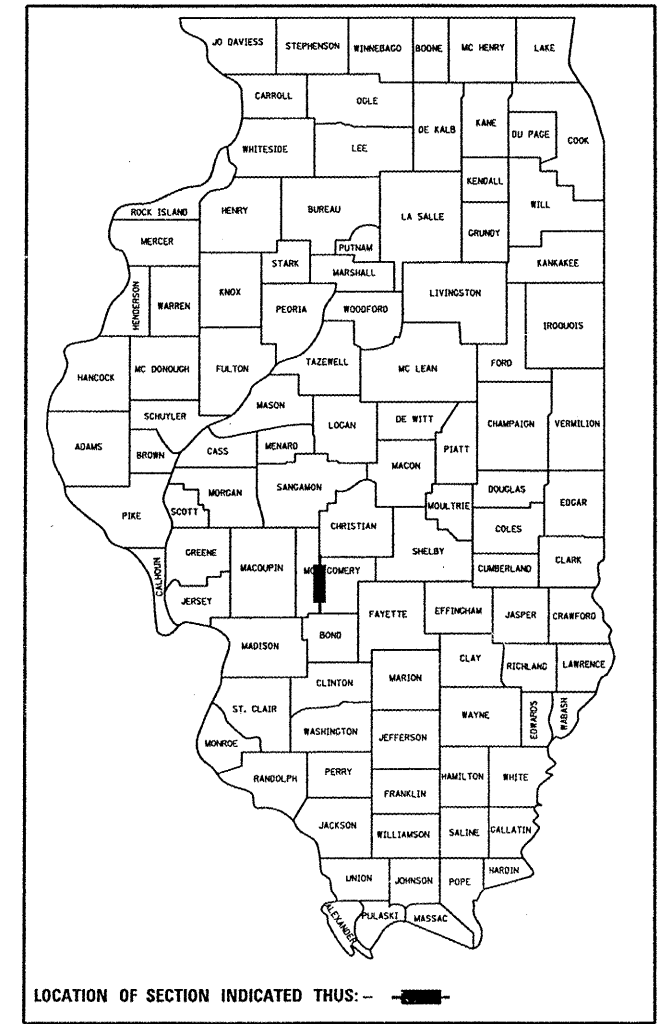
**PROPOSED  
HIGHWAY PLANS**

FAP ROUTE 42 (IL ROUTE 127)  
SECTION 105B-1  
PROJECT ACBRF-0042(103)  
MONTGOMERY COUNTY  
C-96-026-08

|                     |          |                    |              |           |
|---------------------|----------|--------------------|--------------|-----------|
| F.A.P. RTE.         | SECTION  | COUNTY             | TOTAL SHEETS | SHEET NO. |
| 42                  | 105B-1   | MONTGOMERY         | 63           | 1         |
| FED. ROAD DIST. NO. | ILLINOIS | CONTRACT NO. 72B66 |              |           |

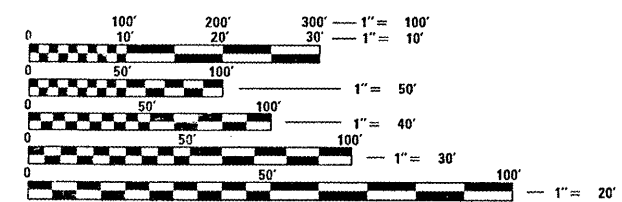
D-96-026-08

FOR INDEX OF SHEETS, SEE SHEET NO. 2



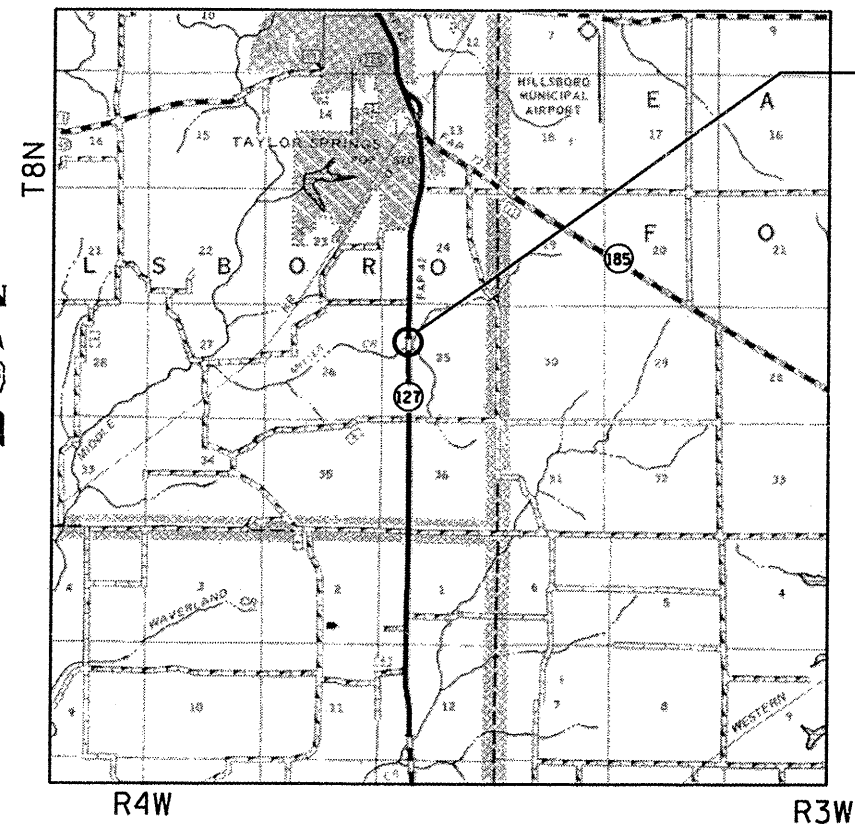
**HIGHWAY CLASSIFICATION**

|                 |                            |
|-----------------|----------------------------|
| ROUTE:          | F.A.P. 42 (IL 127)         |
| CLASSIFICATION: | MINOR ARTERIAL (NON-URBAN) |
| A.D.T.:         | 2650 (2009); 3569 (2029)   |
| D.H.V.:         | 330 (2007)                 |
| DESIGN SPEED:   | 60 M.P.H.                  |
| POSTED SPEED:   | 55 M.P.H.                  |
| PV:             | 2350 (89%)                 |
| SU:             | 150 (5%)                   |
| MJ:             | 150 (5%)                   |



FULL SIZE PLANS HAVE BEEN PREPARED USING STANDARD ENGINEERING SCALES. REDUCED SIZED PLANS WILL NOT CONFORM TO STANDARD SCALES. IN MAKING MEASUREMENTS ON REDUCED PLANS, THE ABOVE SCALES MAY BE USED.

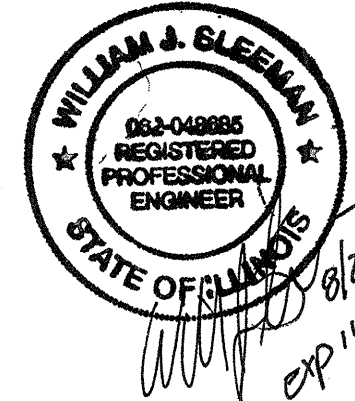
J.U.L.I.E.  
JOINT UTILITY LOCATION INFORMATION FOR EXCAVATION  
1-800-892-0123  
OR 811



SECTION 105B-1  
SN 068-0022 (EX)  
SN 068-0511 (PR)  
STATION 311+55.00  
BRIDGE REPLACEMENT  
BEGIN IMPROVEMENTS STA 306+50.00  
END IMPROVEMENTS STA 316+00.00

LOCATION MAP  
NOT TO SCALE

GROSS OF PROJECT = 950.00 FT (0.18 MI)  
NET LENGTH OF PROJECT = 950.00 FT (0.18 MI)



STATE OF ILLINOIS  
DEPARTMENT OF TRANSPORTATION  
DIVISION OF HIGHWAYS

SUBMITTED 9/9 20 11

Regis P. Dasky  
DEPUTY DIRECTOR OF HIGHWAYS, REGION ENGINEER

Oct 14 20 11  
Scott E. Stitt, P.E.  
ENGINEER OF DESIGN AND ENVIRONMENT

Oct 14 20 11  
Christine M. Reed  
DIRECTOR OF HIGHWAYS, CHIEF ENGINEER

SENIOR TEAM ENGINEER: MARK DUST (217)785-0597  
TEAM LEADER: RENE CABRERA (217)557-9062

CONTRACT NO. 72B66

**BA** BENTON & ASSOCIATES, INC.  
Consulting Engineers / Land Surveyors  
1970 West Lafayette Ave. Jacksonville, IL 62650  
Phone: 217-245-4146 Fax: 217-245-4149  
BENTON & ASSOCIATES INC IL Design Firm Registration No. 184-000852

**PRINTED BY THE AUTHORITY  
OF THE STATE OF ILLINOIS**