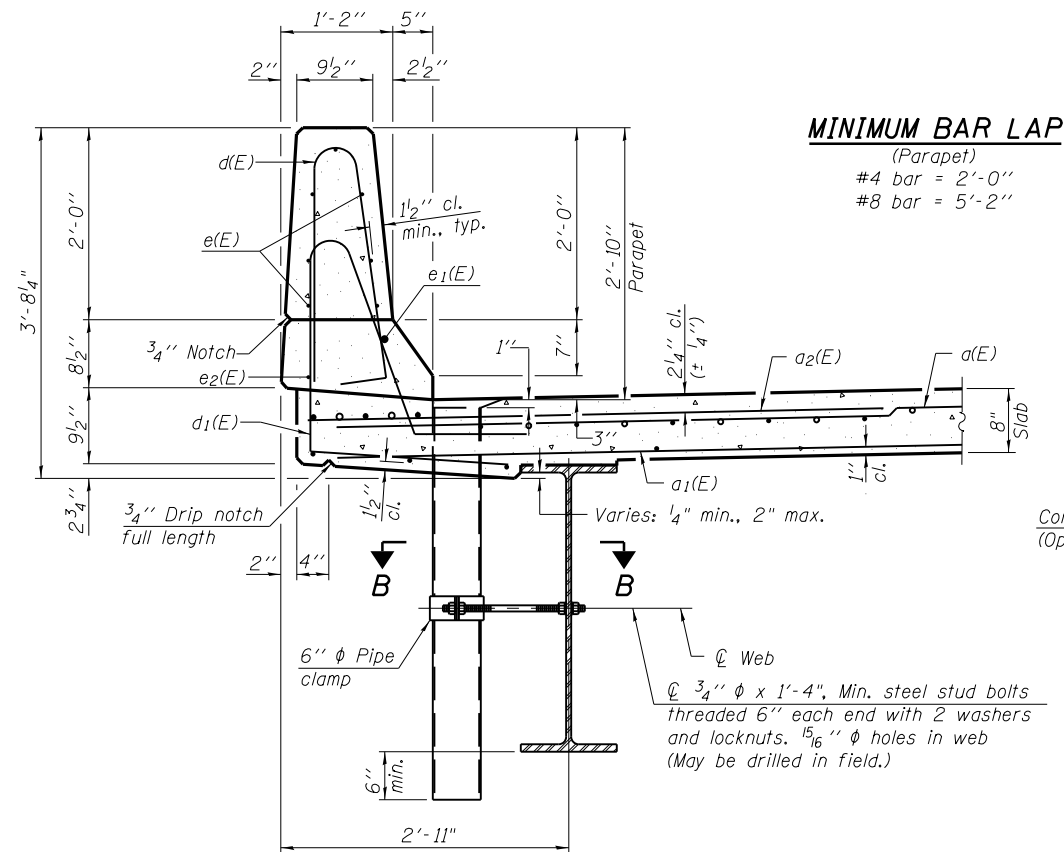
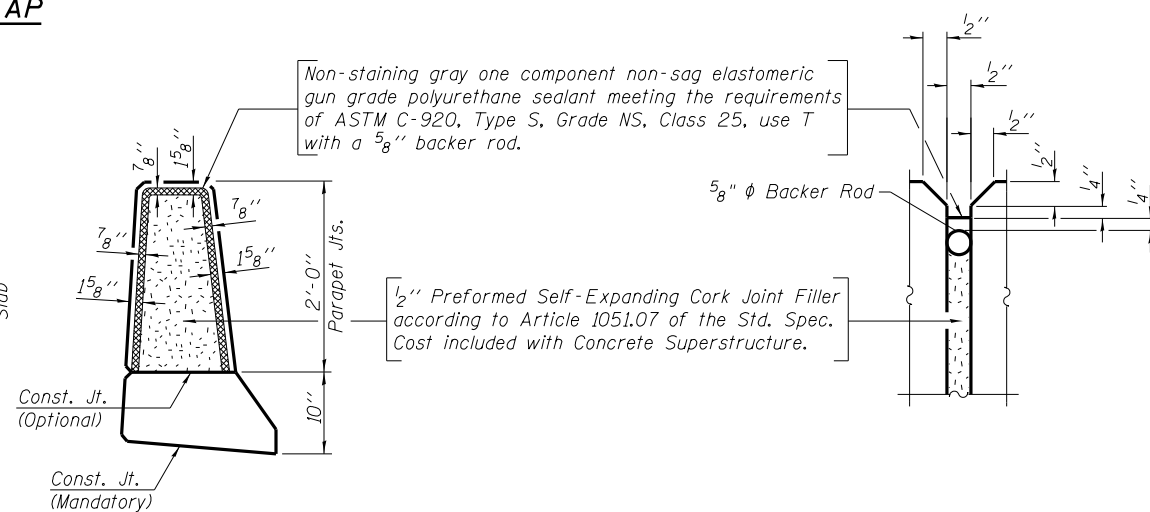


**INSIDE ELEVATION OF PARAPET**



**MINIMUM BAR LAP**  
(Parapet)  
#4 bar = 2'-0"  
#8 bar = 5'-2"



**PARAPET JOINT DETAILS**

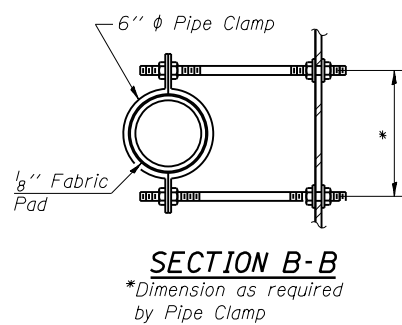
Notes:  
The exterior surfaces of the floor drains shall be painted with the finish coat as specified in the special provisions for Cleaning and Painting New Metal Structures. The exterior surfaces of the drains shall be cleaned according to Society of Protective Coatings Spec. SSPC-SP1 prior to painting.  
Fiberglass pipe shall conform to ASTM D 2996, with short-time rupture strength hoop tensile stress of 30,000 p.s.i. minimum.  
Galvanize clamping device according to AASHTO M232. Cost of clamping device and inserts is included with Floor Drains.

**SUPERSTRUCTURE**  
**BILL OF MATERIAL**

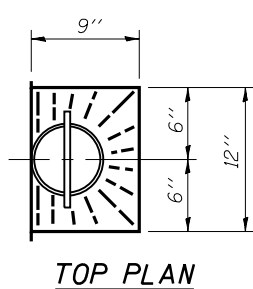
Bar	No.	Size	Length	Shape
a(E)	300	#5	19'-0"	—
a1(E)	182	#5	19'-0"	—
a2(E)	150	#6	6'-6"	—
b(E)	126	#5	26'-8"	—
b1(E)	144	#5	20'-8"	—
d(E)	168	#5	5'-7"	┘
d1(E)	168	#5	7'-8"	┘
e(E)	56	#4	18'-6"	—
e1(E)	6	#8	28'-4"	—
e2(E)	6	#4	26'-3"	—
m(E)	20	#6	19'-3"	—
m1(E)	16	#6	9'-8"	—
m2(E)	8	#6	6'-4"	—
m3(E)	4	#6	2'-7"	—
m4(E)	8	#6	8'-0"	—
m5(E)	4	#6	3'-2"	—
s(E)	82	#5	6'-10"	┘
s1(E)	72	#4	10'-2"	┘
v(E)	80	#5	3'-7"	┘
Reinforcement Bars, Epoxy Coated		Pound	23580	
Concrete Superstructure		Cu. Yds.	118.5	

Bars indicated thus 1x2 - #4 etc. indicates 1 line of bars with 2 lengths per line.

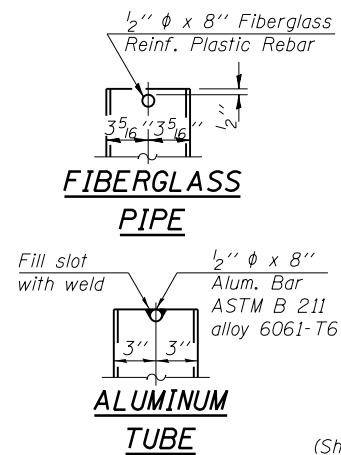
**SECTION THRU PARAPET**



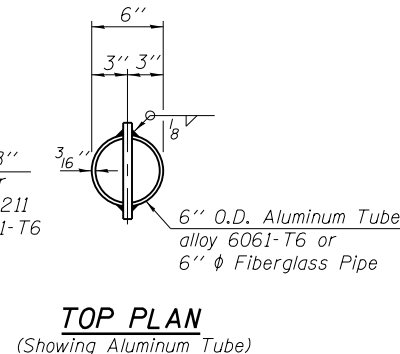
**SECTION B-B**  
\*Dimension as required by Pipe Clamp



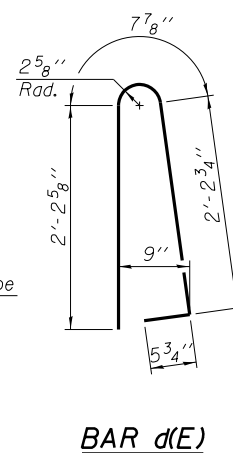
**TOP PLAN**



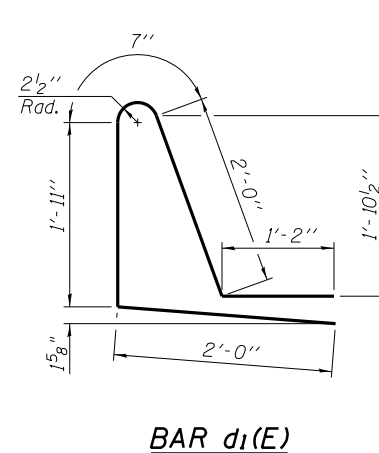
**ALUMINUM TUBE**



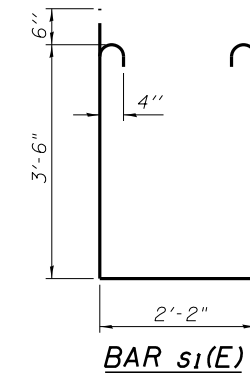
**TOP PLAN**  
(Showing Aluminum Tube)



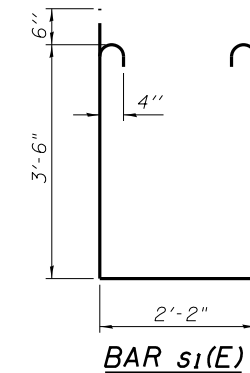
**BAR d(E)**



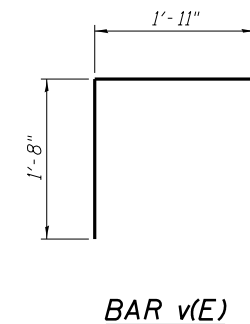
**BAR d1(E)**



**BAR s(E)**



**BAR s1(E)**



**BAR v(E)**

BENTON & ASSOCIATES, INC.

FILE NAME = P:\07el820-2\ Design\ Plans\ Structure Sheets\ 0680511-72B66-009-Super2.dgn	USER NAME =	DESIGNED - MBH	REVISED -
		CHECKED - SJH	REVISED -
		DRAWN - MBH	REVISED -
		CHECKED - SJH	REVISED -

STATE OF ILLINOIS  
DEPARTMENT OF TRANSPORTATION

SUPERSTRUCTURE DETAILS  
STRUCTURE NO. 068-0511

SHEET NO. 9 OF 20 SHEETS

F.A.P. RTE.	SECTION	COUNTY	TOTAL SHEETS	SHEET NO.
42	105B-1	MONTGOMERY	63	30
CONTRACT NO. 72B66				
FED. ROAD DIST. NO. 8 ILLINOIS FED. AID PROJECT				