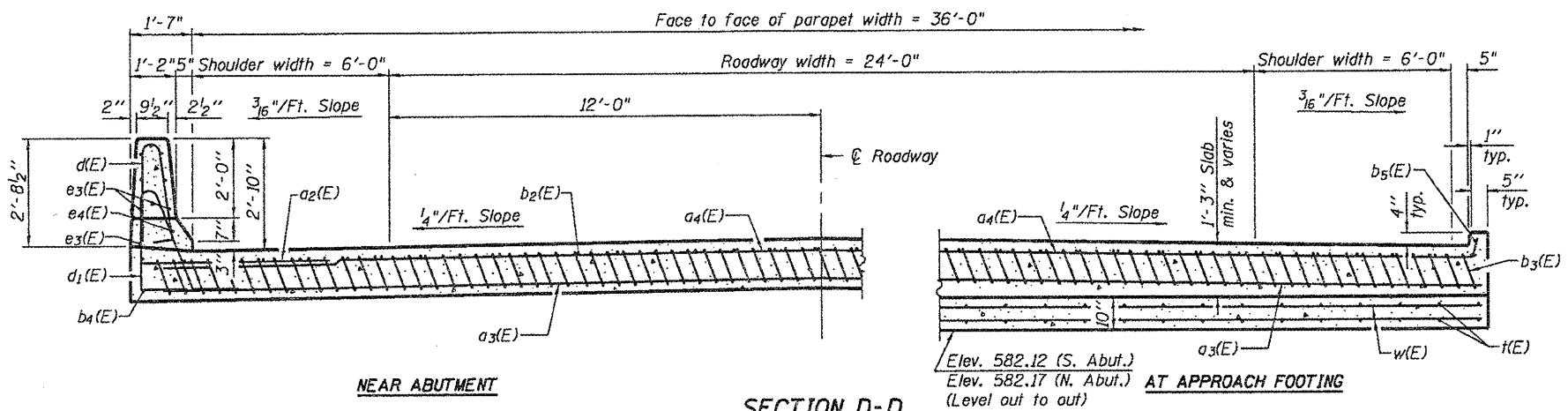
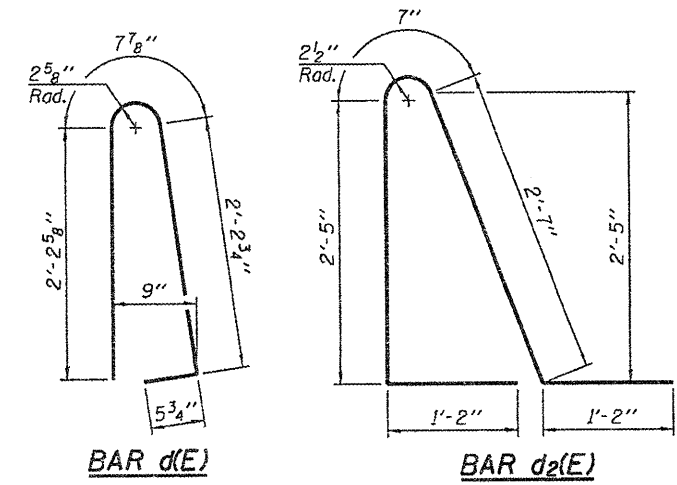
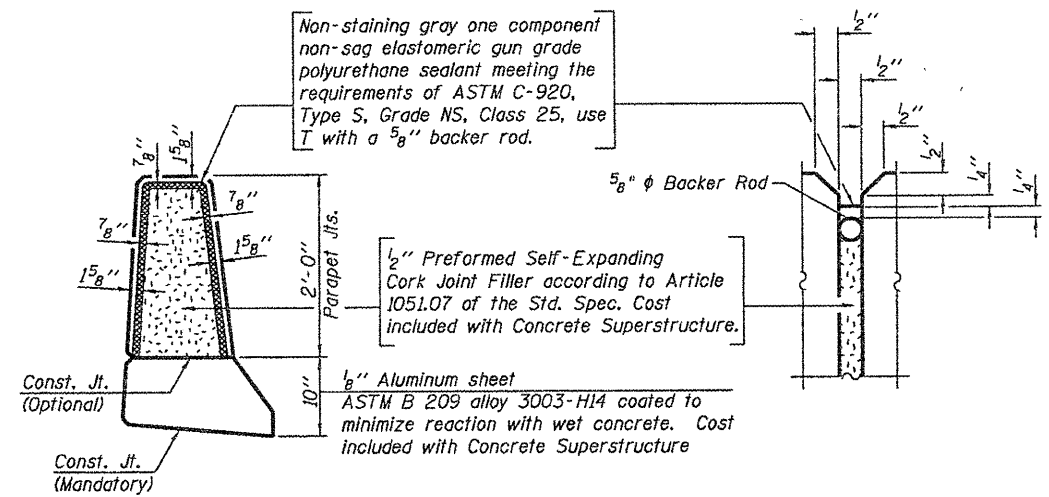
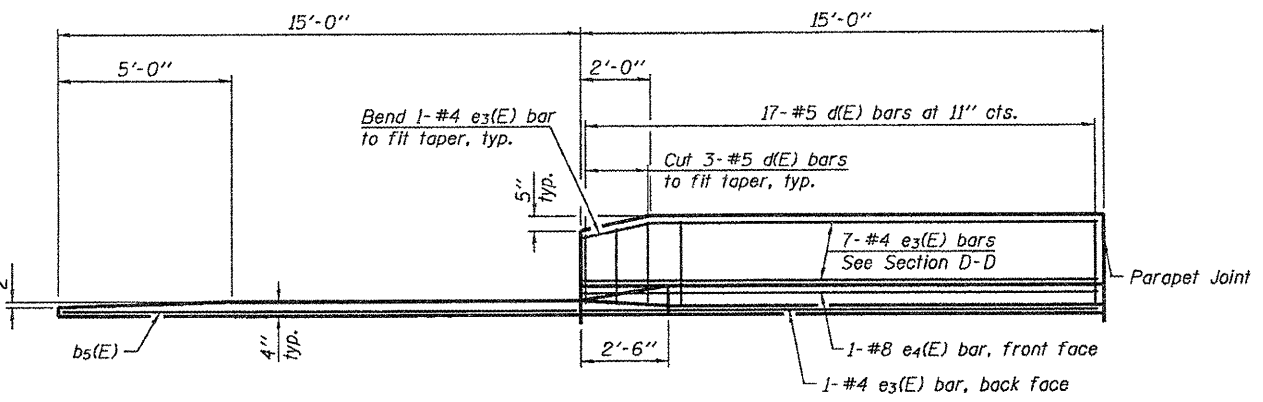


- Notes:
1. See sheet 10 of 20 for Detail A and View B-B.
 2. Approach slab and parapet concrete shall be paid for as Concrete Superstructure.
 3. Approach footing concrete shall be paid for as Concrete Structures.
 4. Reinforcement shall be paid for as Reinforcement Bars, Epoxy Coated.
 5. For v(E) bar details, see sheet 9 of 20.
 6. The approach footing maximum applied service bearing pressure (Qmax) = 2.0 ksf.
 7. For bar splicer details, see sheet 18 of 20.
 8. Cost of excavation for approach footing included with Concrete Structures.
 9. For Porous Granular Embankment (Special) and drainage treatment details, see sheet 13 of 20.
 10. For additional parapet details, see sheet 9 of 20.



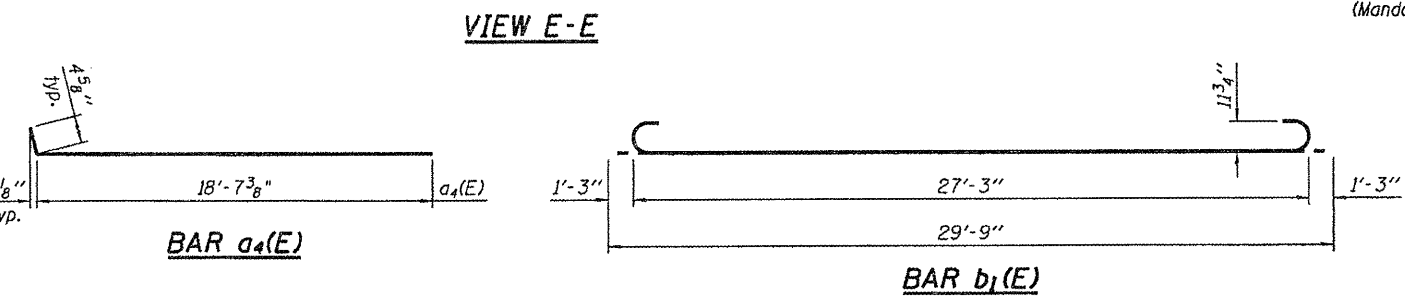
* Tilt #9 b3(E) bars as required to maintain clearance.
 *** Cost included with Concrete Superstructure.



**TWO APPROACHES
BILL OF MATERIAL**

Bar	No.	Size	Length	Shape
a2(E)	48	#6	6'-6"	—
a3(E)	184	#5	18'-9"	—
a4(E)	100	#4	19'-0"	—
b2(E)	60	#4	29'-8"	—
b3(E)	172	#9	29'-9"	—
b4(E)	4	#4	14'-8"	—
b5(E)	4	#4	14'-8"	—
d(E)	68	#5	5'-7"	—
d2(E)	68	#5	7'-11"	—
e3(E)	32	#4	14'-8"	—
e4(E)	4	#8	14'-8"	—
t(E)	78	#4	9'-8"	—
w(E)	80	#5	20'-5"	—
w1(E)	80	#5	17'-10"	—
Concrete Superstructure		Cu. Yd.	116.3	
Concrete Structures		Cu. Yd.	23.4	
Reinforcement Bars, Epoxy Coated		Pound	29290	

- Notes:
- Floor drains need not be painted.
 - Fiberglass pipe shall conform to ASTM D 2996, with short-time rupture strength hoop tensile stress of 30,000 p.s.i. minimum.
 - Galvanize clamping device according to AASHTO M232. Cost of clamping device and inserts is included with Floor Drains.



BA-0 7-1-10
 BENTON & ASSOCIATES, INC.

(Sheet 2 of 2)

FILE NAME = P:\07e1828-2\ Design\	USER NAME =	DESIGNED - MBH	REVISED -
Plans\ Structure Sheets\	PLLOT SCALE =	CHECKED - SJH	REVISED -
8688511-72866-011-Appr2.dgn	PLLOT DATE =	DRAWN - MBH	REVISED -
		CHECKED - SJH	REVISED -

STATE OF ILLINOIS
 DEPARTMENT OF TRANSPORTATION

BRIDGE APPROACH SLAB DETAILS
 STRUCTURE NO. 068-0511
 SHEET NO. 11 OF 20 SHEETS

F.A.P. RTE.	SECTION	COUNTY	TOTAL SHEETS	SHEET NO.
42	105B-1	MONTGOMERY	63	32
CONTRACT NO. 72B66			FED. ROAD DIST. NO. 8 ILLINOIS FED. AID PROJECT	