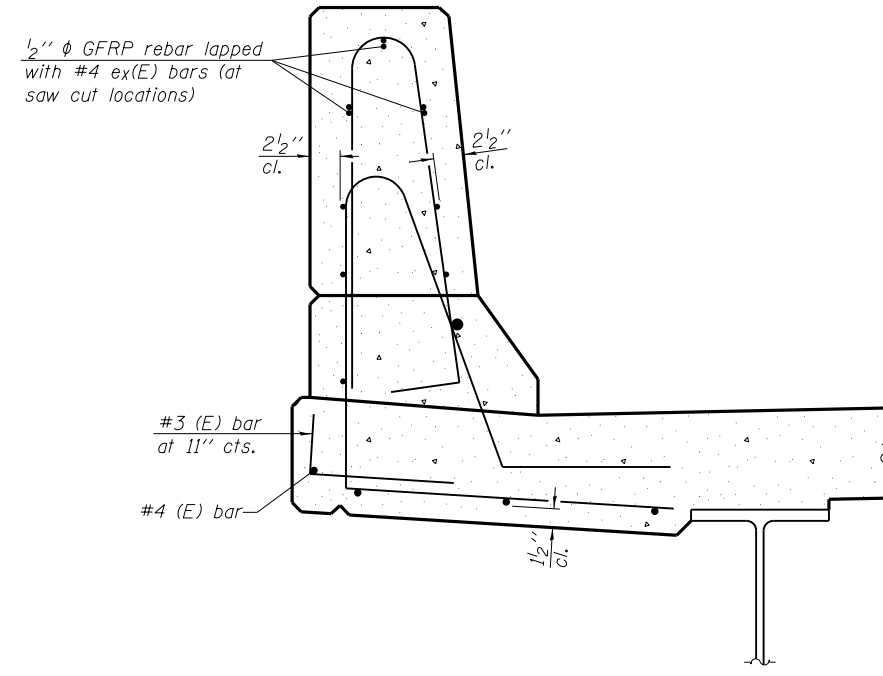
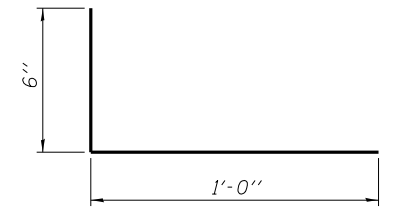


**SECTION**  
(Showing dimensions)

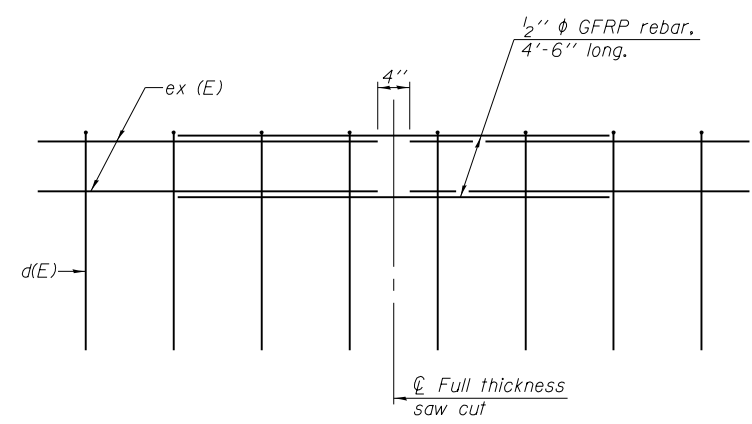


**SECTION**  
(Showing reinforcement clearances for slip forming and additional reinforcement bars)

- GENERAL NOTES**
1. All dimensions shall remain the same as shown on superstructure details, except dimensions A and B which are to be revised as shown to provide additional clearance. Additional concrete needed to revise dimension A and B = 0.0165 cu. yds./ft. of parapet.
  2. Place aluminum sheet in curb portion at and near piers. Full thickness saw cut at all joint locations in lieu of cork joint filler.
  3. Steel superstructure shown. Other superstructure types similar.



**#3 (E) BAR**



**GFRP REBAR STIFFENING DETAIL**  
(Place as shown in parapet section at each parapet joint location.)

\* See Superstructure Details.

SFP-34 7-1-10  
BENTON & ASSOCIATES, INC.

FILE NAME = P:\07el820-2\ Design\ Plans\ Structure Sheets\ 0680511-72B66-012-S1.p.dgn	USER NAME =	DESIGNED - MBH	REVISED -
		CHECKED - SJH	REVISED -
	PLOT SCALE =	DRAWN - MBH	REVISED -
	PLOT DATE =	CHECKED - SJH	REVISED -

STATE OF ILLINOIS  
DEPARTMENT OF TRANSPORTATION

CONCRETE PARAPET SLIPFORMING OPTION  
STRUCTURE NO. 068-0511

SHEET NO. 12 OF 20 SHEETS

F.A.P. RTE.	SECTION	COUNTY	TOTAL SHEETS	SHEET NO.
42	105B-1	MONTGOMERY	63	33
CONTRACT NO. 72B66				
FED. ROAD DIST. NO. 8 ILLINOIS FED. AID PROJECT				