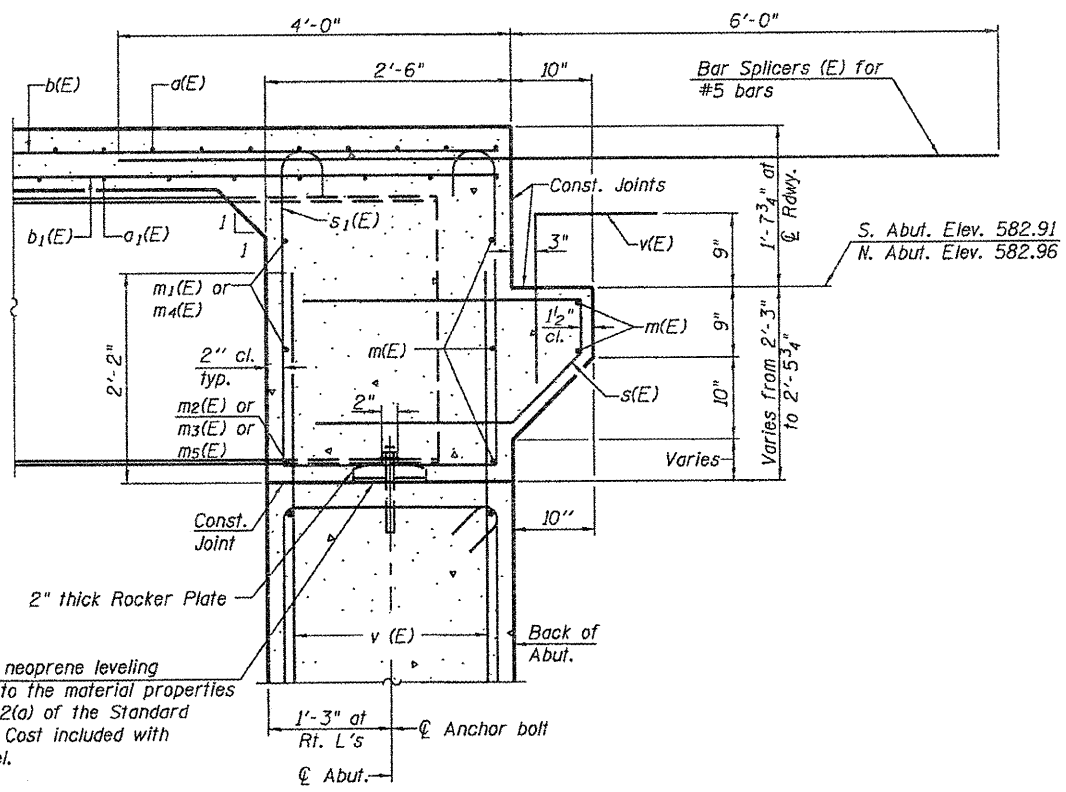


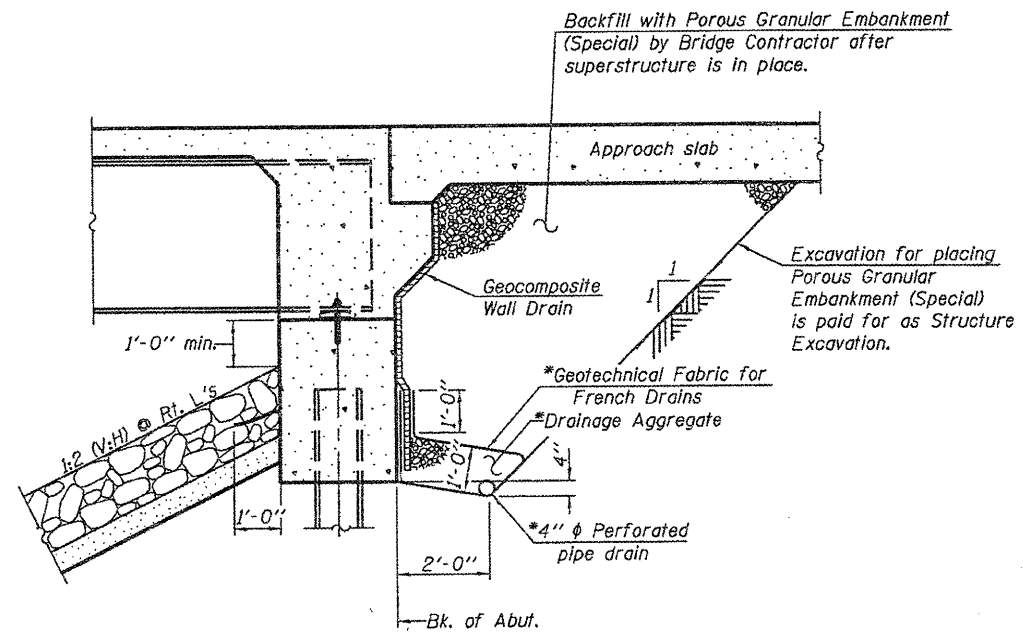
DIAPHRAGM ELEVATION AT ABUTMENT

Notes:
 Reinforcement bars in diaphragm are billed with superstructure on sheet 7 of 20.
 Concrete in diaphragm is included with Concrete Superstructure on sheet 7 of 20.
 For details of bars s(E) & s1(E) see sheet 7 of 20.
 The s(E) and s1(E) bars shall be placed parallel to the beams. Spacing for these bars shall be at right angles to the beams.

MIN. BAR LAP
 #6 bar = 3'-4"



SECTION A-A
 Dimensions at right angles to abutment, except as shown.



SECTION THRU INTEGRAL ABUTMENT
 (Horiz. dim. @ Rt. L's)

*Included in the cost of Pipe Underdrains for Structures.

Note:
 All drainage system components shall extend to 2'-0" from the end of each wingwall except an outlet pipe shall extend until intersecting with the side slopes. The pipes shall drain into concrete headwalls. (See Article 601.05 of the Standard Specifications and Highway Standard 601101).

BENTON & ASSOCIATES, INC.

FILE NAME = P:\07e1828-2\ Design\	USER NAME =	DESIGNED - MBH	REVISED -
Plans\ Structure Sheets\		CHECKED - SJH	REVISED -
0680511-72866-013-Abut.Dwg		DRAWN - MBH	REVISED -
		CHECKED - SJH	REVISED -

STATE OF ILLINOIS
DEPARTMENT OF TRANSPORTATION

INTEGRAL ABUTMENT DIAPHRAGM DETAILS
STRUCTURE NO. 068-0511

F.A.P. RTE.	SECTION	COUNTY	TOTAL SHEETS	SHEET NO.
42	105B-1	MONTGOMERY	63	34
			CONTRACT NO. 72B66	
FED. ROAD DIST. NO. 8 ILLINOIS FED. AID PROJECT				

SHEET NO. 13 OF 20 SHEETS