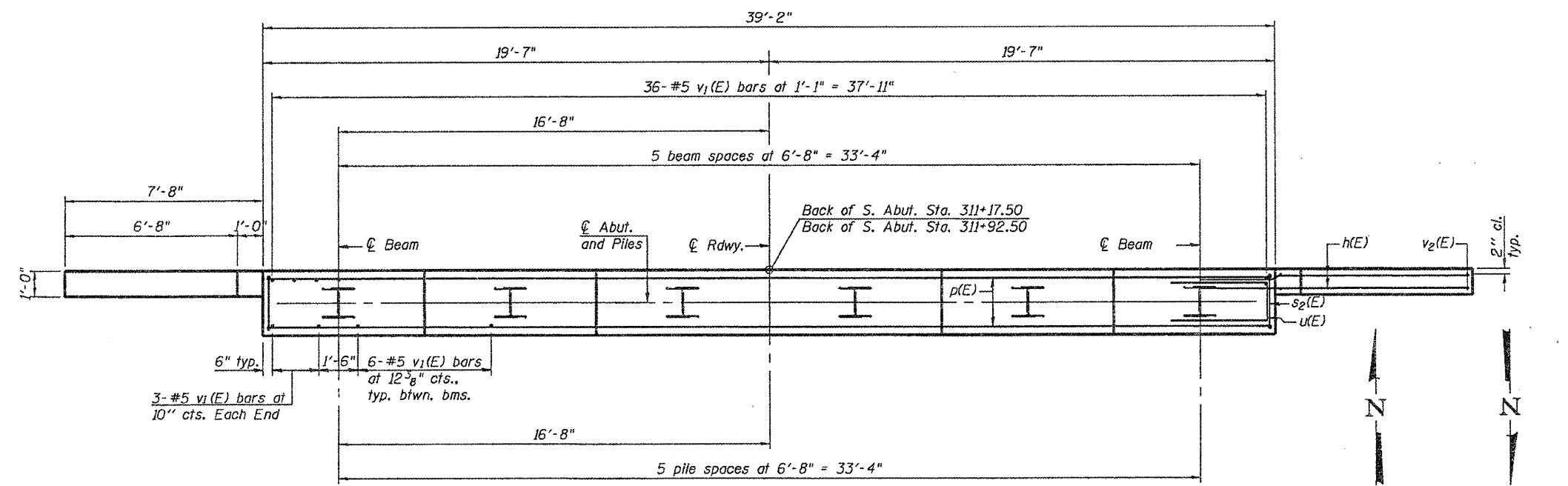
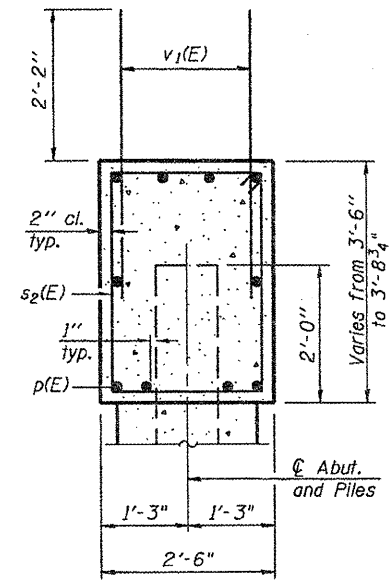
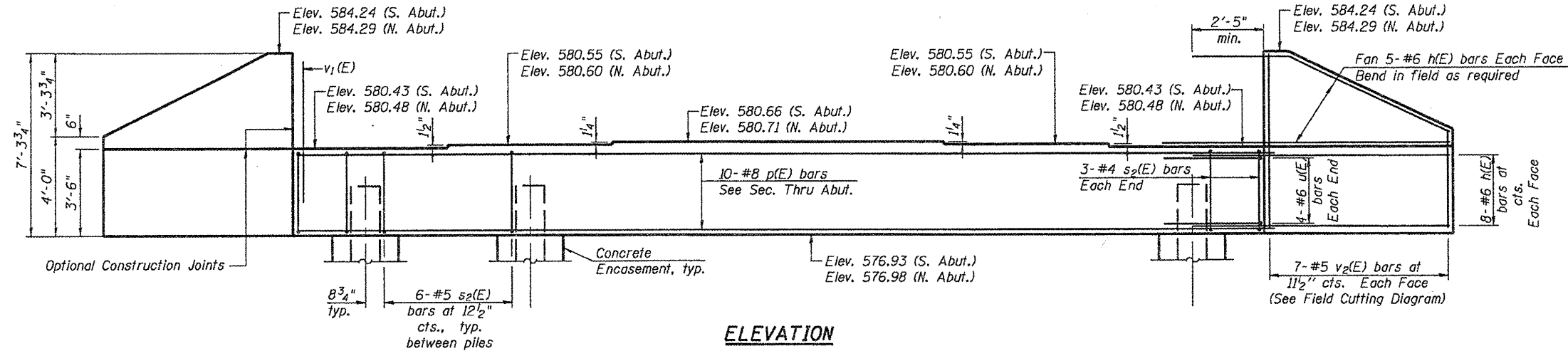


Notes:
Pour steps monolithically with cap.



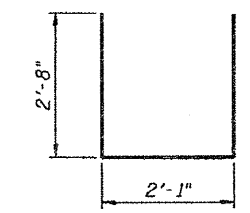
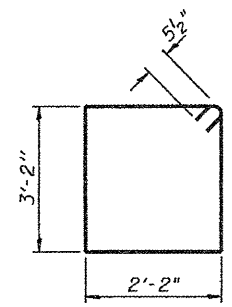
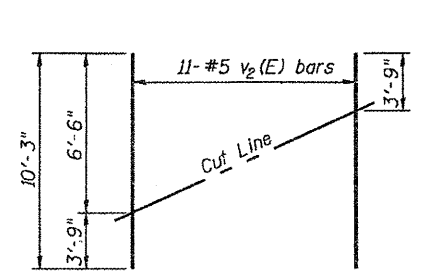
BILL OF MATERIAL

Bar	No.	Size	Length	Shape
h(E)	104	#6	9'-4"	—
p(E)	40	#8	19'-6"	—
s ₂ (E)	72	#5	11'-7"	□
u(E)	16	#6	7'-5"	—
v ₁ (E)	144	#5	4'-4"	—
v ₂ (E)	28	#5	10'-3"	—
Structure Excavation			Cu. Yd.	228
Concrete Structures			Cu. Yd.	33.0
Reinforcement Bars, Epoxy Coated			Pound	5540
Furnishing Steel Piles, HP 14x73			Foot	490
Driving Piles			Foot	490
Test Pile Steel HP 14x73			Each	2
Concrete Encasement			Cu. Yd.	6.6

For details of Bar Splicers, see sheet 18 of 20.
For details of piles and Concrete Encasement, see sheet 17 of 20.

PILE DATA

	N. Abut.	S. Abut.
Type:	HP14x73	HP14x73
Nominal Required Bearing:	578 kip	578 kip
Maximum Factored Resistance Available:	313 kip	315 kip
Est. Length:	50	48
No. Production Piles:	5	5
No. Test Piles:	1	1



Order v₂(E) full length. Cut as shown and use remainder of bars in opposite face.

AI-0
BENTON & ASSOCIATES, INC.

7-1-10

FILE NAME =	USER NAME =	DESIGNED -	REVISIONS
PA 07el826-2\ Design\ Plans\ Structure Sheets\ 0689511-72865-016-Abut.dgn		MBH	
		CHECKED -	REVISIONS
		S.JH	
		DRAWN -	REVISIONS
		MBH	
		CHECKED -	REVISIONS
		S.JH	

STATE OF ILLINOIS
DEPARTMENT OF TRANSPORTATION

ABUTMENTS
STRUCTURE NO. 068-0511
SHEET NO. 16 OF 20 SHEETS

F.A.P. RTE.	SECTION	COUNTY	TOTAL SHEETS	SHEET NO.
42	105B-1	MONTGOMERY	63	37
				CONTRACT NO. 72B66
FED. ROAD DIST. NO. 8 (ILLINOIS) FED. AID PROJECT				