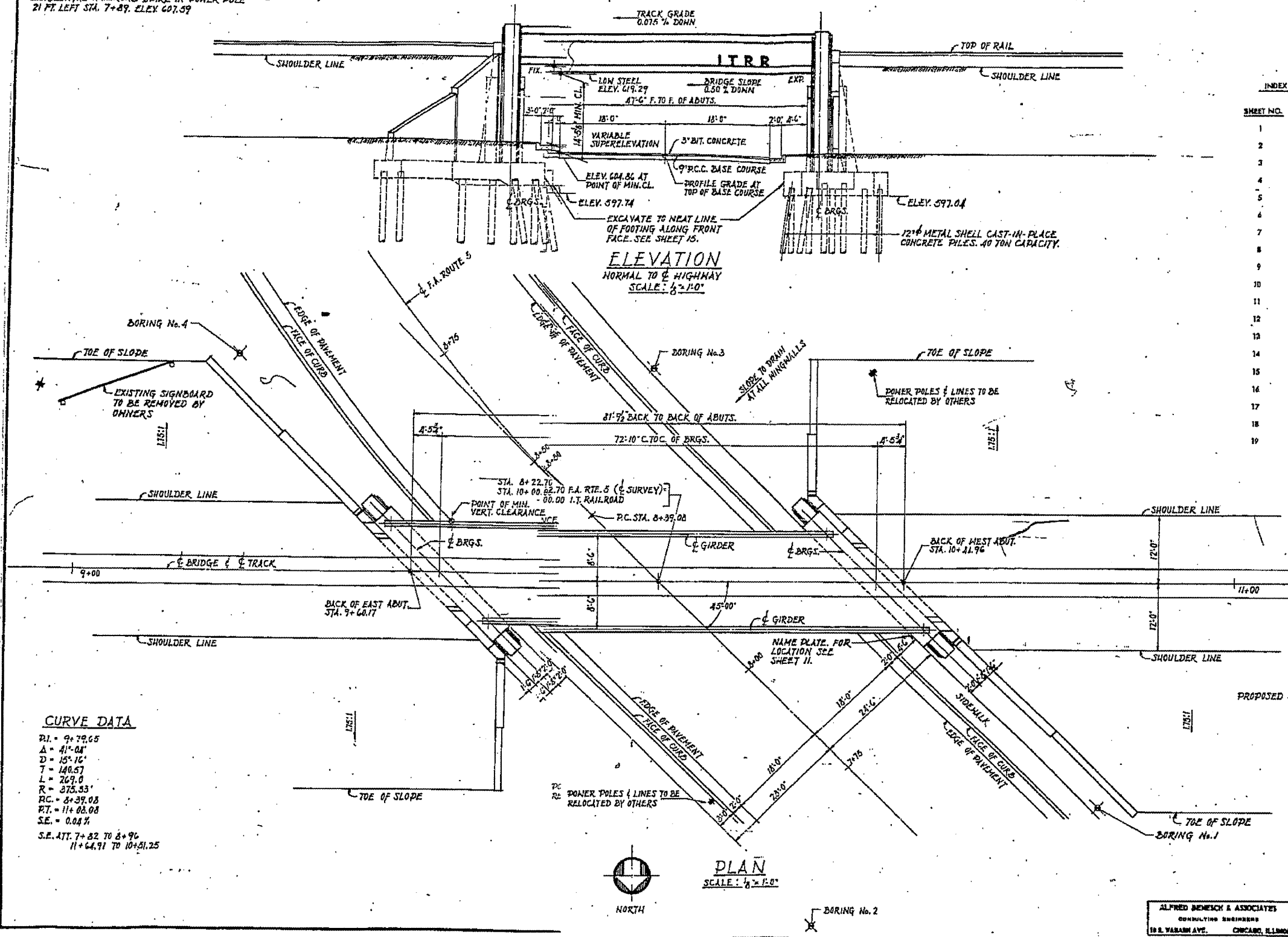


BENCH MARK No. 1  
HORIZONTAL RAILROAD SPIKE IN POWER POLE  
21 FT. LEFT STA. 7+89. ELEV. 607.59

084-0033

SECTION	COUNTY	TOTAL SHEETS	SHEET NO.
F.A. 5	110X-75B	SANGAMON	25
TO STA.		PROJECT	
S.P.A. DIST. NO. 6		ILLINOIS	

SHEET 1 of 19

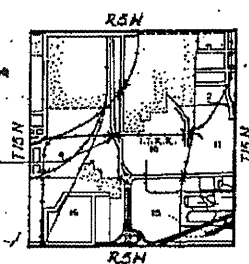


INDEX OF BRIDGE PLANS

SHEET NO.	DESCRIPTION
1	GENERAL PLAN & ELEVATION
2	BORINGS, PROFILES, GENERAL NOTES, DESIGN DATA & QUANTITIES
3	STEEL FRAMING PLAN
4	GRIDER DETAILS
5	TYPICAL DECK CROSS SECTION
6	END FLOOR BEAM
7	UPPER FLOOR PLATE DETAILS
8	FLOOR PLATE DETAILS
9	BEARINGS
10	ABUTMENT FOOTING PLAN
11	WEST ABUTMENT
12	EAST ABUTMENT
13	ABUTMENT DETAILS
14	REINFORCEMENT BAR LISTS
15	EXCAVATION & DRAINAGE DETAILS
16	PLAN & ELEVATION OF TEMPORARY TRESTLE
17	TEMPORARY TRESTLE STEEL SPAN DETAILS
18	TEMPORARY TRESTLE DETAILS
19	TEMPORARY TRESTLE DETAILS

CURVE DATA

PI.	9+79.65
Δ	41°-04'
D	15°-16'
T	140.57
L	269.0
R	375.33'
P.C.	8+39.08
P.T.	11+08.08
S.E.	0.04%
S.E. ATT.	7+82 TO 8+96
	11+64.91 TO 10+51.25



LOCATION PLAN  
084-0033

GENERAL PLAN & ELEVATION  
UNDERPASS  
I.T.R.R. BRIDGE No. F-77.5  
OVER SOUTH 5<sup>TH</sup> STREET EXTENDED SPRINGFIELD, ILLINOIS  
PROJECT UG 166(40)  
F.A. ROUTE 5 SECTION 110X-75B  
SANGAMON COUNTY  
STATION 8+22.70

ALFRED BEMESCH & ASSOCIATES  
CONSULTING ENGINEERS  
19 S. WABASH AVE. CHICAGO, ILLINOIS

FILE NAME	USER NAME	DESIGNED	REVISED
#FILE#	#USER#	---	---
		DRAWN	REVISED
		CHECKED	REVISED
		DATE	REVISED

STATE OF ILLINOIS  
DEPARTMENT OF TRANSPORTATION

SCALE	SHEET NO.	OF	SHEETS	STA.	TO STA.

F.A.P. RTE.	SECTION	COUNTY	TOTAL SHEETS	SHEET NO.
666	D-6 PAINTING 2008	SANGAMON	13	7
2-01-2		CONTRACT NO. 72C48		
FED. ROAD DIST. NO. 6 ILLINOIS FED. AID PROJECT				