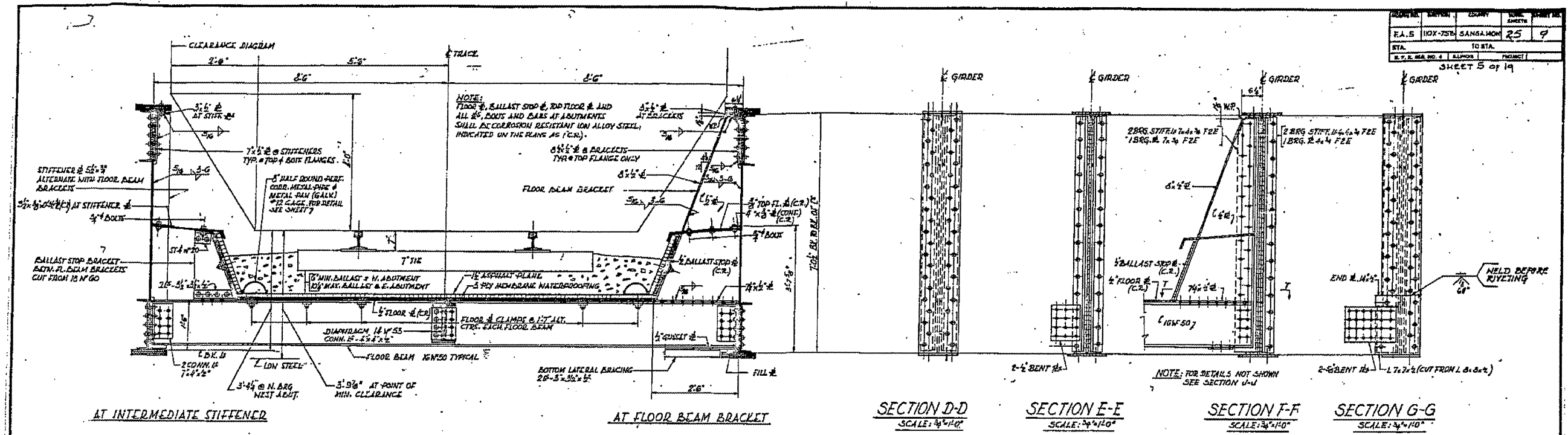
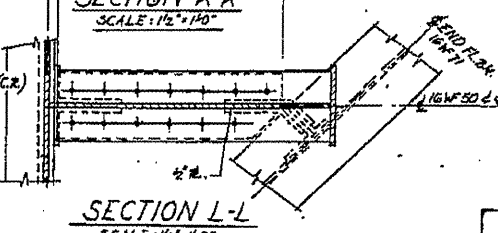
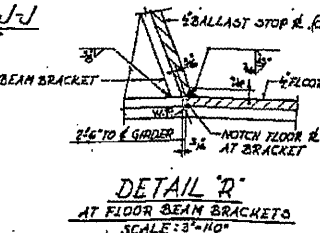
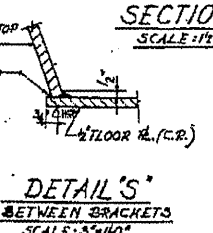
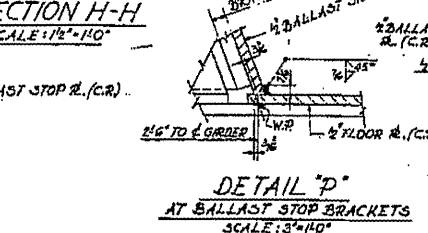
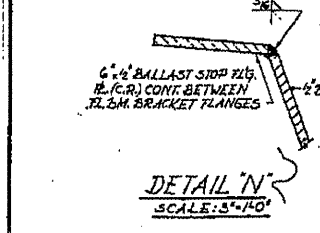
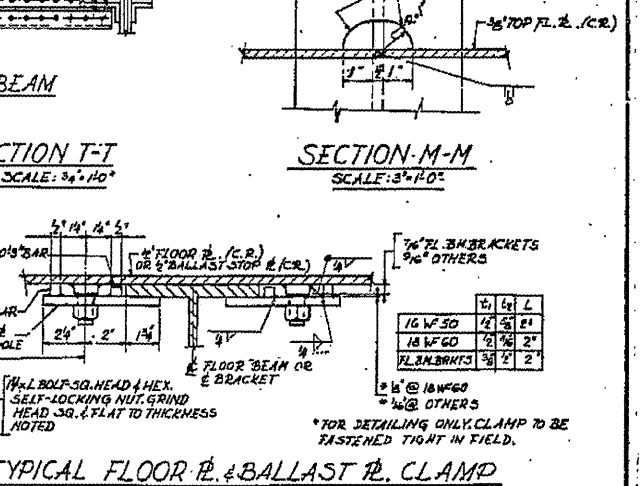
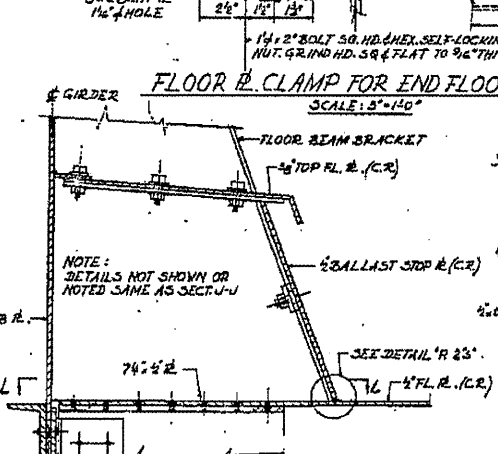
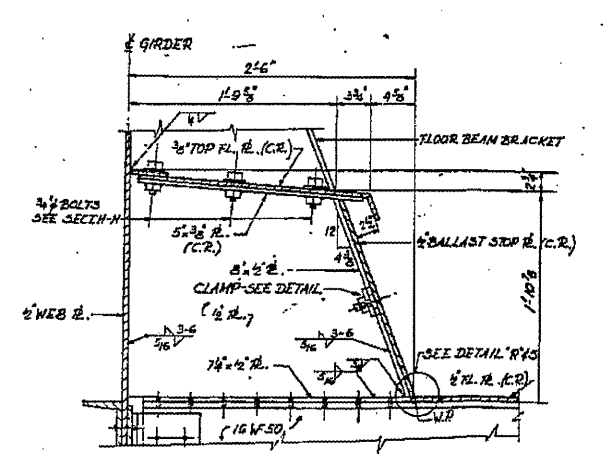
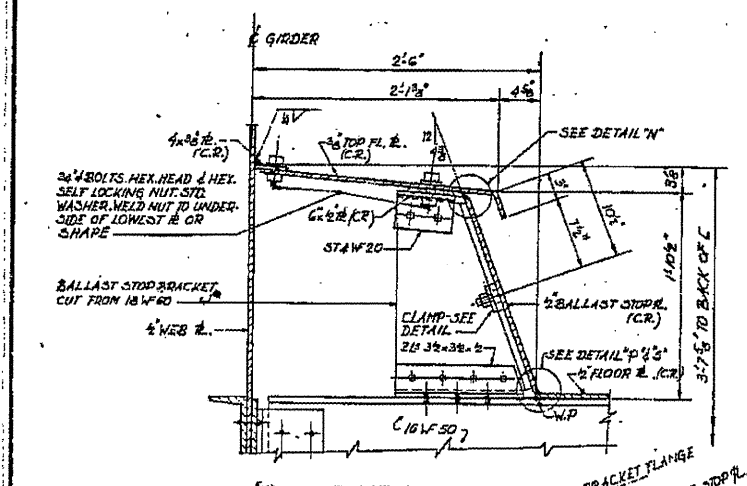


PROJECT NO.	SECTION	COUNTY	TOTAL SHEETS	SHEET NO.
E.A.S. 110X-75B	SANGAMON	25	9	
STA.	TO STA.			
R.F.D. NO. 4	ALPONS		PROJECT	
SHEET 5 of 14				



TYPICAL DECK CROSS SECTION
SCALE: 3/4"=1'-0"

NOTES:
FOR LOCATION OF SECTIONS B-D, E-E, F-F, G-G & K-K, SEE SHEET 4
FOR LOCATION OF SECTIONS H-H, J-J, L-L & M-M SEE SHEET 7.



TYPICAL DECK CROSS SECTION UNDER PASS
I.T.R.R. BRIDGE No. F-77.5
OVER SOUTH 5TH STREET EXTENDED SPRINGFIELD, ILLINOIS
PROJECT UG 166 (40)
F.A. ROUTE 5 SECTION 110X-75B
SANGAMON COUNTY STATION 8+22.70

ALFRED BENISH & ASSOCIATES
CONSULTING ENGINEERS
161 W. WABASH AVE. CHICAGO, ILLINOIS

FILE NAME = #FILE#	USER NAME = #USER#	DESIGNED -	REVISED -
		DRAWN -	REVISED -
		CHECKED -	REVISED -
		DATE -	REVISED -

STATE OF ILLINOIS
DEPARTMENT OF TRANSPORTATION

684-0033 (FOR INFORMATION ONLY)	SCALE: _____	SHEET NO. _____ OF _____ SHEETS	STA. _____ TO STA. _____
---------------------------------	--------------	---------------------------------	--------------------------

F.A.P. RTE. 666	SECTION D-6 PAINTING 2009	COUNTY SANGAMON	TOTAL SHEETS 13	SHEET NO. 10
2012		CONTRACT NO. 72C4B		
FED. ROAD DIST. NO. 6 (ILLINOIS) FED. AID PROJECT				