

F.A.U. RTE.	SECTION	COUNTY	TOTAL SHEETS	SHEET NO.
7998	110TS,N,L	SANGAMON	95	1
		ILLINOIS	CONTRACT NO. 72C87	

STATE OF ILLINOIS
DEPARTMENT OF TRANSPORTATION
DIVISION OF HIGHWAYS

D-96-082-09

INDEX OF SHEETS

- 1 COVER SHEET
- 2 GENERAL NOTES
- 3 - 4 SUMMARY OF QUANTITIES (2)
- 5 - 10 TYPICAL SECTIONS (6)
- 11 - 21 SCHEDULE OF QUANTITIES (11)
- 22 ALIGNMENT, TIES, & BENCH MARKS
- 23 - 27 PLAN AND PROFILE SHEETS (5)
- 28 PLAN SHEET CHATHAM RD.
- 29 DRAINAGE DETAIL
- 30 INTERSECTION DETAIL
- 31 - 35 PAVEMENT ELEVATION DETAILS (5)
- 36 - 39 PAVEMENT MARKING DETAILS (4)
- 40 - 43 TRAFFIC SIGNAL PLANS (4)
- 44 - 50 LIGHTING PLANS (7)
- 51 PRISMATIC CURB REFLECTORS
- 52 - 53 ENTRANCE AND SIDEROAD DETAILS (2)
- 54 - 56 PERMANENT SIGNING SHEETS (3)
- 57 - 95 CROSS SECTIONS (39)

PROPOSED
HIGHWAY PLANS

FAU ROUTE 8159 (OLD US 66)
(EAST LAKE SHORE DR./PALM RD.)
FAU ROUTE 7998 (CHATHAM RD.)
SECTION 110TS,N,L
PROJECT ACHSIP-0005(865)
INTERSECTION IMPROVEMENT, RESURFACING,
TRAFFIC SIGNAL INSTALLATION, & LIGHTING
SANGAMON COUNTY
C-96-082-09



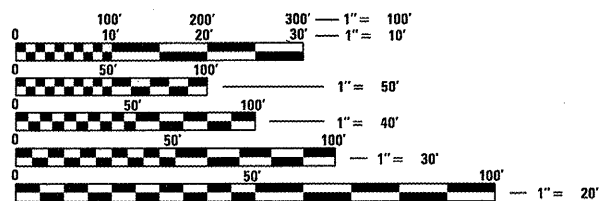
HIGHWAY CLASSIFICATION

F.A.P. ROUTE 8159 (OLD US 66/PALM RD./E. LAKE SHORE DR)

CLASSIFICATION: MINOR ARTERIAL
ADT: 6,450 (2009) PV = 5,725, 89.0% (2009)
ADT: 8,700 (2029) SU = 525, 9.0%
DESIGN SPEED: 55 MPH MU = 125, 2.0%
POSTED SPEED: 55 MPH

F.A.P. ROUTE 7998 (CHATHAM RD.)

CLASSIFICATION: MINOR ARTERIAL
ADT: 6,900 (2009) PV = 6,675, 97.0% (2009)
ADT: 9,300 (2029) SU = 175, 2.0%
DESIGN SPEED: 45 MPH MU = 125, 1.0%
POSTED SPEED: 45 MPH

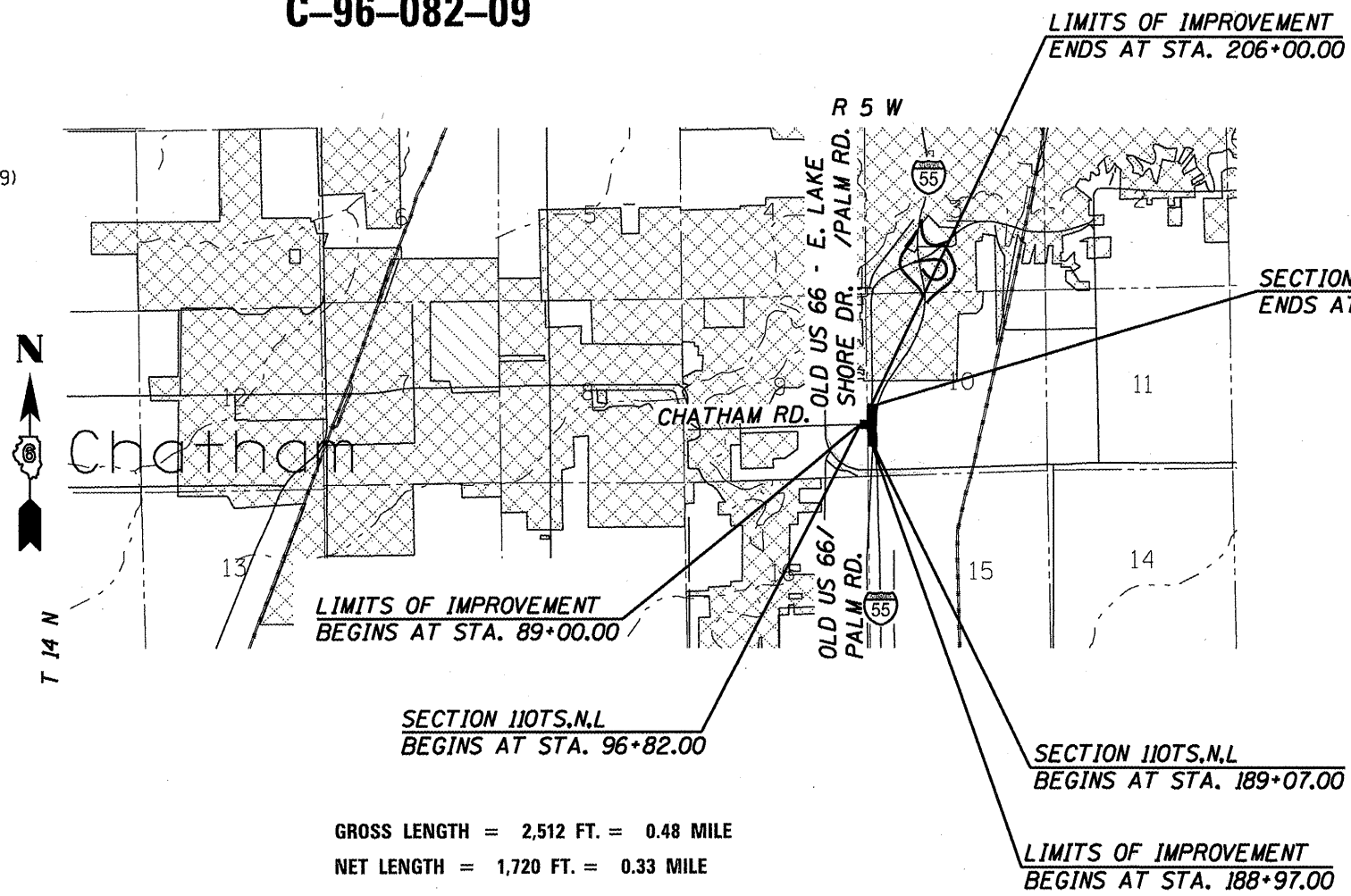


FULL SIZE PLANS HAVE BEEN PREPARED USING STANDARD ENGINEERING SCALES. REDUCED SIZED PLANS WILL NOT CONFORM TO STANDARD SCALES. IN MAKING MEASUREMENTS ON REDUCED PLANS, THE ABOVE SCALES MAY BE USED.

J.U.L.I.E.
JOINT UTILITY LOCATION INFORMATION FOR EXCAVATION
1-800-892-0123
OR 811

SENIOR TEAM ENGINEER: MARK DUST (217) 782-0597
TEAM ENGINEER: RENE CABRERA (217) 557-9062

CONTRACT NO. 72C87



STATE OF ILLINOIS
DEPARTMENT OF TRANSPORTATION
DIVISION OF HIGHWAYS

SUBMITTED August 31 20 11
Roger Z. Dmskall
DEPUTY DIRECTOR OF HIGHWAYS, REGION ENGINEER

Oct 14 20 11
Scott E. Stitt, P.E. *la*
ENGINEER OF DESIGN AND ENVIRONMENT

Oct 14 20 11
Christine M. Reed *la*
DIRECTOR OF HIGHWAYS, CHIEF ENGINEER

PRINTED BY THE AUTHORITY
OF THE STATE OF ILLINOIS