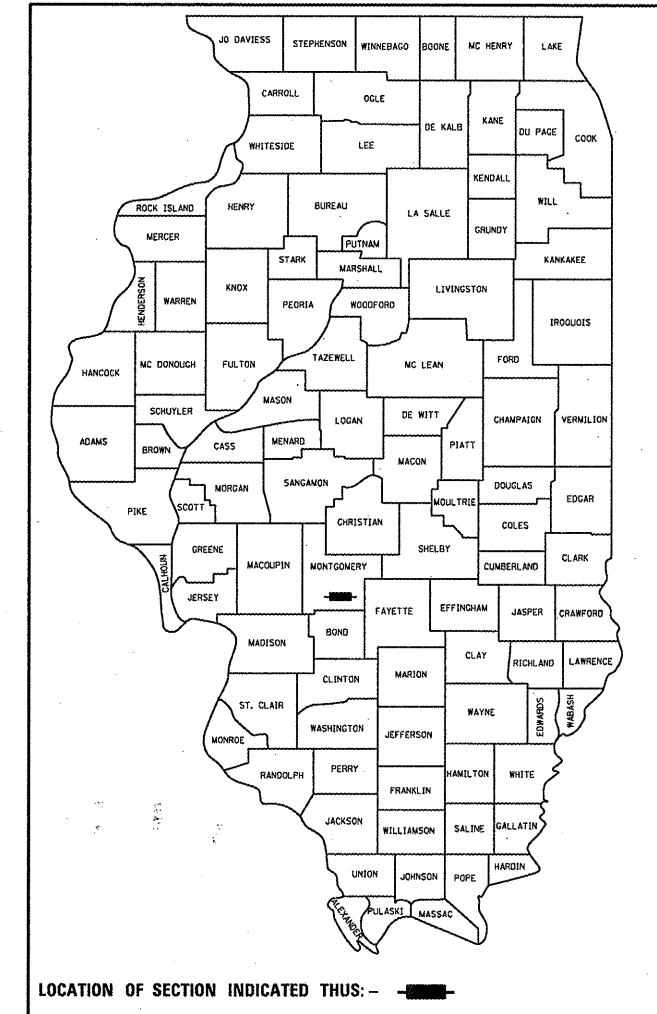


F.A.P. RTE.	SECTION	COUNTY	TOTAL SHEETS	SHEET NO.
**	*	MONTGOMERY	80	1
		ILLINOIS	CONTRACT NO. 72D67	

* - (15, 21)RS-7, 22RS-4, 24RS-8
 ** - 42, 325

D-96-001-10



INDEX OF SHEETS

- 1 COVER SHEET
- 2 GENERAL NOTES
- 3-6 SUMMARY OF QUANTITIES
- 7-17 TYPICAL CROSS SECTIONS
- 18-35 SCHEDULE OF QUANTITIES
- 36-55 PLAN SHEETS
- 56-64 PAVEMENT MARKING SHEETS
- 65-66 BUTT-JOINT DETAILS
- 67-69 ROADWAY SUPERELEVATION SHEETS
- 70 ENTRANCE DETAILS
- 71 SIDEWALK/DETECTABLE WARNING DETAILS
- 72-73 FRAME & GRATE ADJUSTMENT DETAILS
- 74-82 TRAFFIC SIGNALIZATION SHEETS

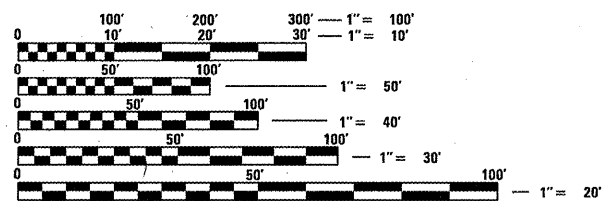
STATE OF ILLINOIS DEPARTMENT OF TRANSPORTATION DIVISION OF HIGHWAYS

PROPOSED HIGHWAY PLANS

**IL ROUTE 16 (FAP 325) & IL 127 (FAP 42)
 SECTION (15, 21)RS-7, 22RS-4, 24RS-8
 PROJECT ACF-000S(868)
 PPP BITUMINOUS RESURFACING FOR IL 16 & IL 127
 MONTGOMERY COUNTY
 C-96-001-10**

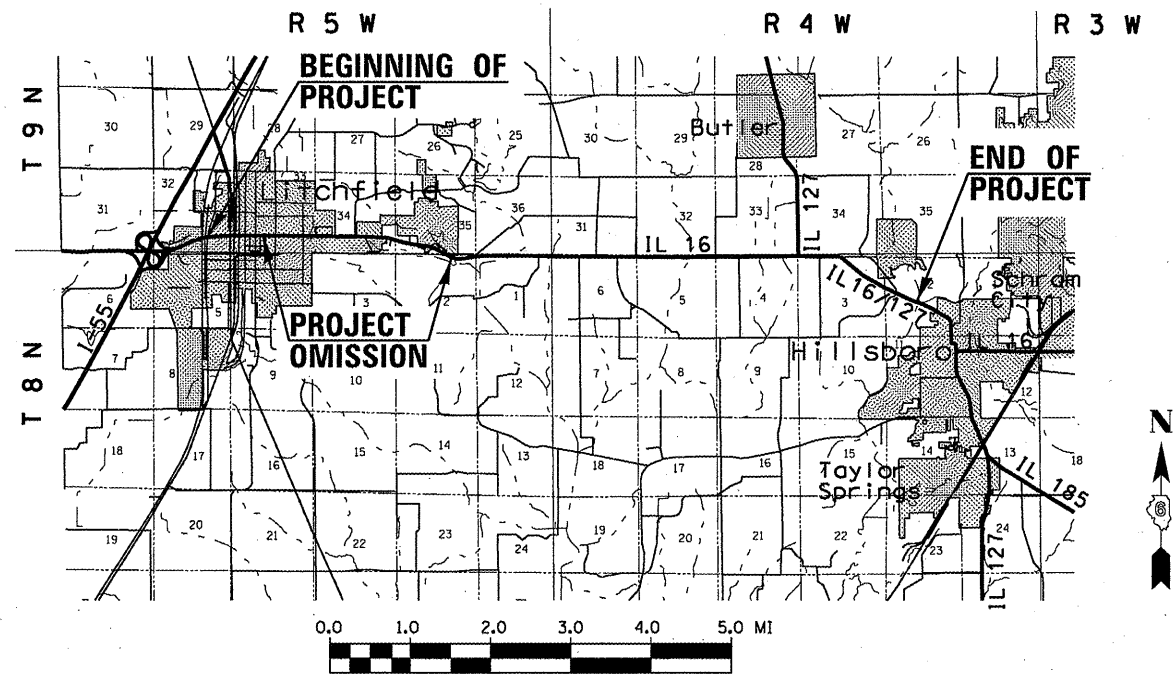
STANDARDS

000001-06	701326-04
001001-02	701502-04
001006	701602-05
406201-01	701701-07
424001-05	701801-04
442201-03	701901-01
482001-02	720001-01
630301-05	720006-02
635006-03	728001-01
701001-02	780001-02
701006-03	781001-03
701201-04	877001-04
701301-04	878001-08
701306-03	880006-01
701311-03	



FULL SIZE PLANS HAVE BEEN PREPARED USING STANDARD ENGINEERING SCALES. REDUCED SIZED PLANS WILL NOT CONFORM TO STANDARD SCALES. IN MAKING MEASUREMENTS ON REDUCED PLANS, THE ABOVE SCALES MAY BE USED.

J.U.L.I.E.
 JOINT UTILITY LOCATION INFORMATION FOR EXCAVATION
 1-800-892-0123
 OR 811



SCALE (MILES)
 LOCATION MAP

PROJECT STATIONING:
 BEGINNING OF PROJECT (LITCHFIELD) - 923 + 67.05
 STATION EQUATION - 942 + 12.70 BK. = 0 + 00.00 AHD.
 END OF URBAN SECTION (LITCHFIELD) - 19 + 97.28
 BEGINNING OF RURAL SECTION (EAST OF LITCHFIELD) - 100 + 64.00
 STATION EQUATION - 131 + 27.83 BK. = 131 + 19.80 AHD.
 BRIDGE OMISSION (WEST FORK, SHOAL CREEK) - 158 + 40.49 TO 160 + 67.70
 BRIDGE OMISSION (BRUSH CREEK) - 277 + 49.25 TO 279 + 82.33
 STATION EQUATION - 428 + 69.55 BK. = 433 + 70.11 AHD.
 END OF PROJECT (MIDDLE FORK, SHOAL CREEK) - 441 + 25.00

GROSS LENGTH = 36,951.11 FT. = 6.998 MILES
 NET LENGTH = 36,490.82 FT. = 6.911 MILES

PROJECT ENGINEER: JEFF MYERS (217) 782-4761
 TEAM MANAGER: TIM SLAGLE (217) 785-5338

CONTRACT NO. 72D67

STATE OF ILLINOIS
 DEPARTMENT OF TRANSPORTATION
 DIVISION OF HIGHWAYS

SUBMITTED August 24 20 11
R. J. Dwyer
 DEPUTY DIRECTOR OF HIGHWAYS, REGION ENGINEER

Oct 14 20 11
Scott E. Stitt P.E.
 ENGINEER OF DESIGN AND ENVIRONMENT

Oct 14 20 11
Christine M. Reed
 DIRECTOR OF HIGHWAYS, CHIEF ENGINEER

**PRINTED BY THE AUTHORITY
 OF THE STATE OF ILLINOIS**