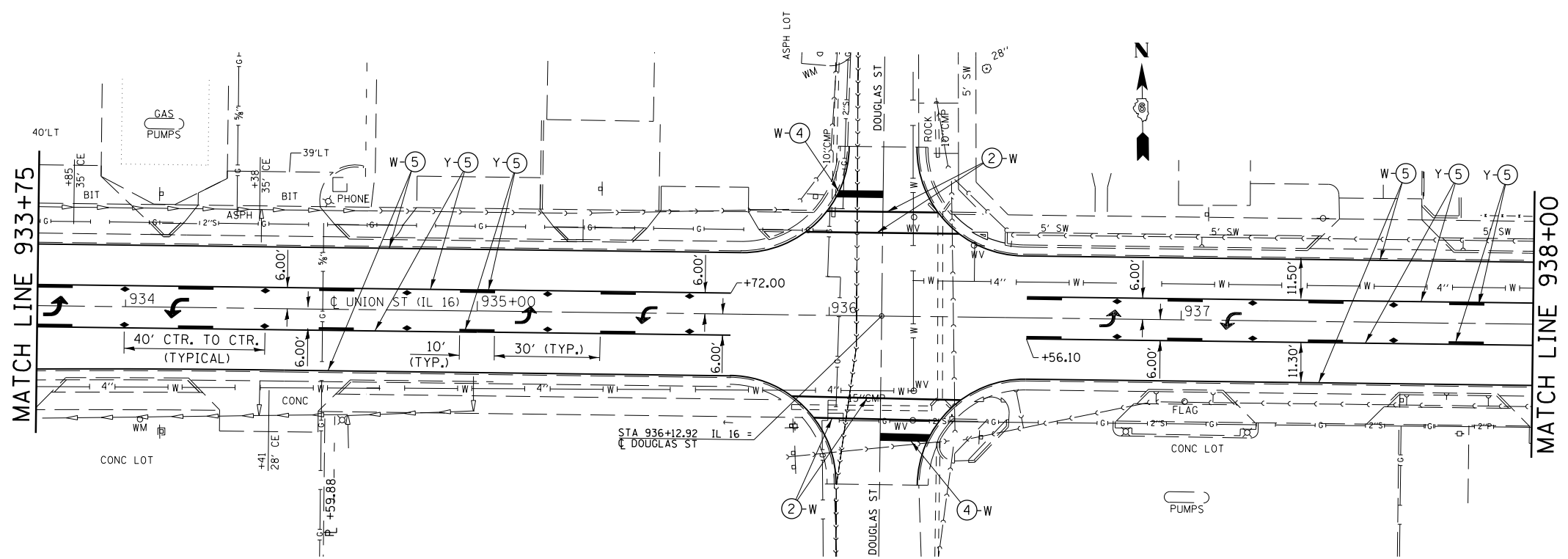


EXIST. CURVE #2
 P.I. STA = 930+46.67
 $\Delta = 10^{\circ}30'02''$
 $D = 2^{\circ}49'27''$
 $R = 2028.69'$
 $T = 186.42'$
 $L = 371.80'$
 $E = 8.55'$
 $S.E. =$
 P.C. STA = 928+60.25
 P.T. STA = 932+32.05

EXIST. CURVE #2
 P.I. STA = 930+46.67
 $\Delta = 10^{\circ}30'02''$
 $D = 2^{\circ}49'27''$
 $R = 2028.69'$
 $T = 186.42'$
 $L = 371.80'$
 $E = 8.55'$
 $S.E. =$
 P.C. STA = 928+60.25
 P.T. STA = 932+32.05



PAVEMENT MARKING LEGEND	
①	PREFORMED PLASTIC PAVEMENT MARKING, TYPE B, INLAID - LINE 5"
②	PREFORMED PLASTIC PAVEMENT MARKING, TYPE B, INLAID - LINE 6"
③	PREFORMED PLASTIC PAVEMENT MARKING, TYPE B, INLAID - LINE 6" (6' SKIP- 2' DASH)
④	PREFORMED PLASTIC PAVEMENT MARKING, TYPE B, INLAID - LINE 24"
⑤	THERMOPLASTIC PAVEMENT MARKING - LINE 5"
⑥	THERMOPLASTIC PAVEMENT MARKING - LINE 5" (DOUBLE YELLOW LINES @ 13" CENTERS)
⑦	THERMOPLASTIC PAVEMENT MARKING - LINE 6"
⑧	THERMOPLASTIC PAVEMENT MARKING - LINE 8"
⑨	THERMOPLASTIC PAVEMENT MARKING - LINE 12"
⑩	PAINT PAVEMENT MARKING - LINE 5"
↪	PREFORMED PLASTIC PAVEMENT MARKING, TYPE B, INLAID - LETTERS AND SYMBOLS (WHITE)
▷	RAISED REFLECTIVE PAVEMENT MARKER (ONE-WAY CRYSTAL)
▶	RAISED REFLECTIVE PAVEMENT MARKER (ONE-WAY AMBER)
◆	RAISED REFLECTIVE PAVEMENT MARKER (TWO-WAY AMBER)
⊗-W	PAVEMENT MARKING, WHITE
⊗-Y	PAVEMENT MARKING, YELLOW

325, 42
 (15, 21)RS-7, 22RS-4, 24RS-8

FILE NAME =	USER NAME = sparksgw	DESIGNED - RTS	REVISED -	STATE OF ILLINOIS DEPARTMENT OF TRANSPORTATION	PAVEMENT MARKING LAYOUT (LITCHFIELD)		F.A.P. RTE.	SECTION	COUNTY	TOTAL SHEETS	SHEET NO.
et:\pw\work\p\idot\sparksgw\102222005\0672067-sht-pmk.dgn		DRAWN - RTS	REVISED -		SCALE:	SHEET NO. 2 OF 5 SHEETS	STA.	TO STA.	MONTGOMERY	80	57
PLOT SCALE = 40.0000' / in.		CHECKED - RTS	REVISED -						CONTRACT NO. 72D67		
PLOT DATE = Aug-25-2011 10:16:12AM		DATE - 06-16-11	REVISED -						FED. ROAD DIST. NO.	ILLINOIS	FED. AID PROJECT