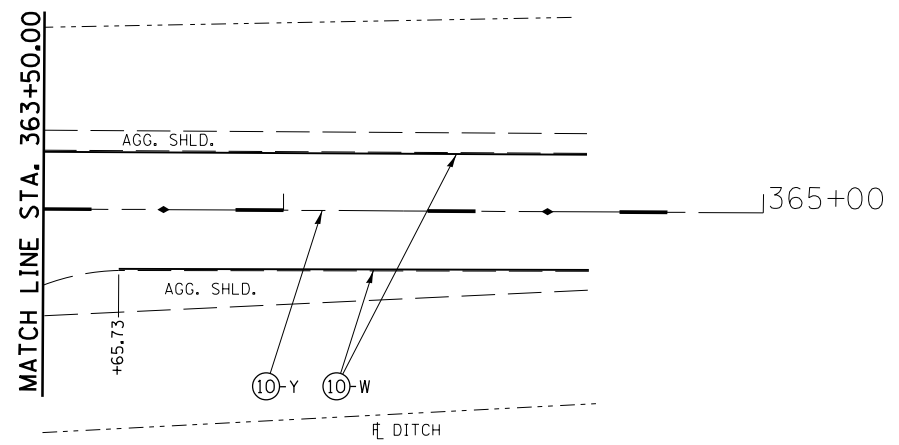
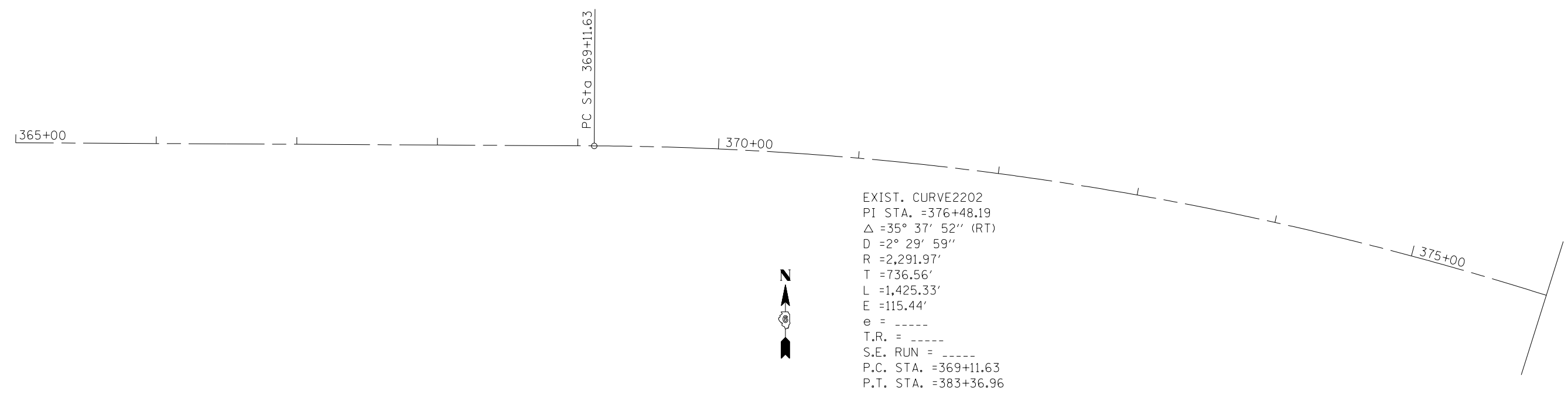


BUSHES &
SMALL TREES
TB



PAVEMENT MARKING LEGEND

- ① PREFORMED PLASTIC PAVEMENT MARKING, TYPE B, INLAID - LINE 5"
- ② PREFORMED PLASTIC PAVEMENT MARKING, TYPE B, INLAID - LINE 6"
- ③ PREFORMED PLASTIC PAVEMENT MARKING, TYPE B, INLAID - LINE 6" (6' SKIP- 2' DASH)
- ④ PREFORMED PLASTIC PAVEMENT MARKING, TYPE B, INLAID - LINE 24"
- ⑤ THERMOPLASTIC PAVEMENT MARKING - LINE 5"
- ⑥ THERMOPLASTIC PAVEMENT MARKING - LINE 5" (DOUBLE YELLOW LINES @ 13" CENTERS)
- ⑦ THERMOPLASTIC PAVEMENT MARKING - LINE 6"
- ⑧ THERMOPLASTIC PAVEMENT MARKING - LINE 8"
- ⑨ THERMOPLASTIC PAVEMENT MARKING - LINE 12"
- ⑩ PAINT PAVEMENT MARKING - LINE 5"
- ↪ PREFORMED PLASTIC PAVEMENT MARKING, TYPE B, INLAID - LETTERS AND SYMBOLS (WHITE)
- ▷ RAISED REFLECTIVE PAVEMENT MARKER (ONE-WAY CRYSTAL)
- ▶ RAISED REFLECTIVE PAVEMENT MARKER (ONE -WAY AMBER)
- ◆ RAISED REFLECTIVE PAVEMENT MARKER (TWO -WAY AMBER)
- ⊗-W PAVEMENT MARKING, WHITE
- ⊗-Y PAVEMENT MARKING, YELLOW



EXIST. CURVE2202
PI STA. =376+48.19
Δ =35° 37' 52" (RT)
D =2° 29' 59"
R =2,291.97'
T =736.56'
L =1,425.33'
E =115.44'
e = -----
T.R. = -----
S.E. RUN = -----
P.C. STA. =369+11.63
P.T. STA. =383+36.96

-- 325, 42
--- (15, 21)RS-7, 22RS-4, 24RS-8

FILE NAME =	USER NAME = sparksgw	DESIGNED - RTS	REVISED -	STATE OF ILLINOIS DEPARTMENT OF TRANSPORTATION	PAVEMENT MARKING LAYOUT (IL 16 /IL 127 INTERSECTION)	F.A.P. RTE.	SECTION	COUNTY	TOTAL SHEETS	SHEET NO.	
et:\pw\work\p\idot\sparksgw\0222005\0672067-sht-pmk.dgn		DRAWN - RTS	REVISED -			•	••	MONTGOMERY	80	64	
PLOT SCALE = 40.0000' / in.		CHECKED - RTS	REVISED -			CONTRACT NO. 72D67					
PLOT DATE = Aug-25-2011 10:16:15AM		DATE - 06-16-11	REVISED -			FED. ROAD DIST. NO. ILLINOIS FED. AID PROJECT					
					SCALE:	SHEET NO. 4 OF 4 SHEETS		STA. TO STA.			