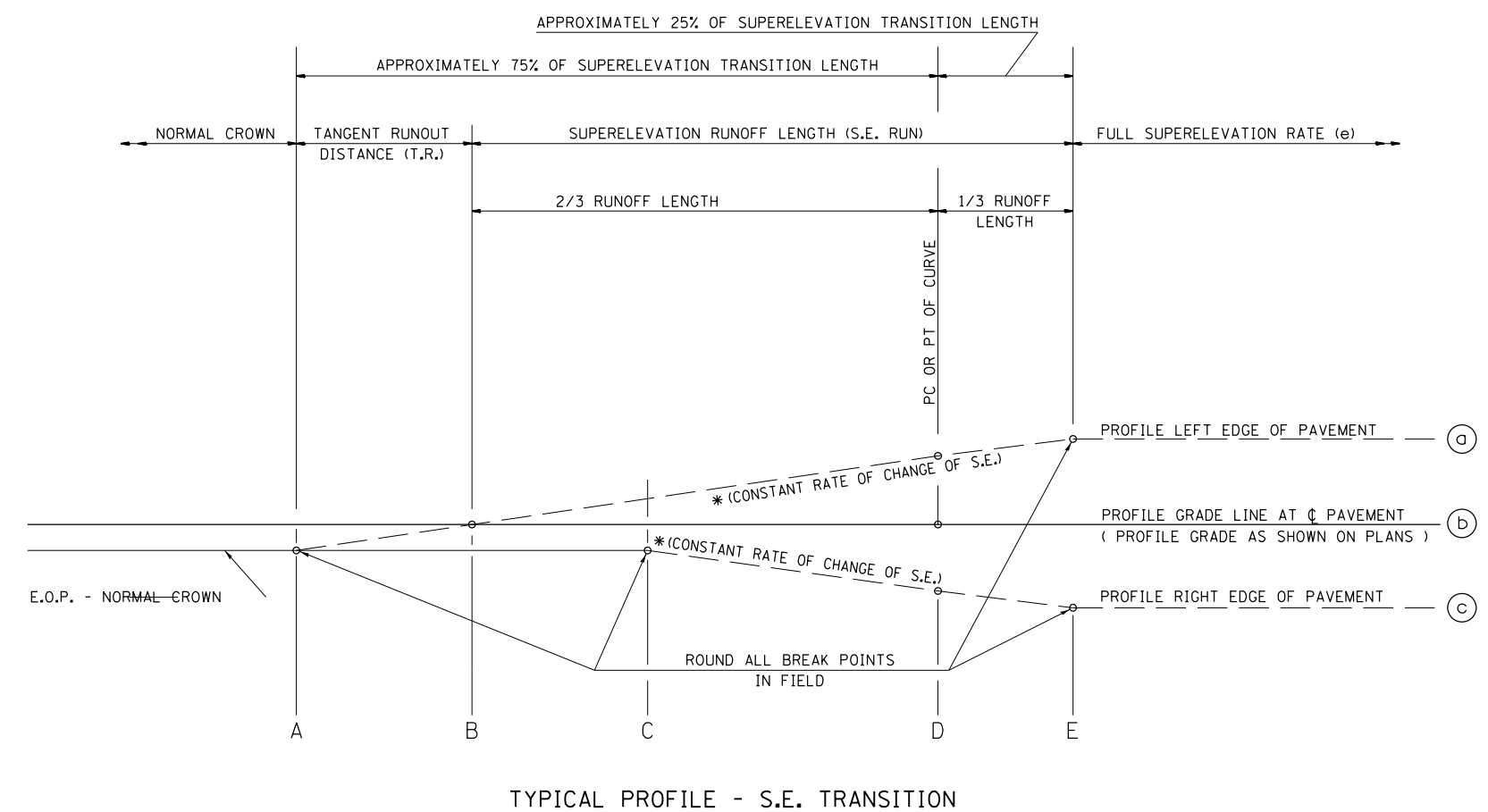
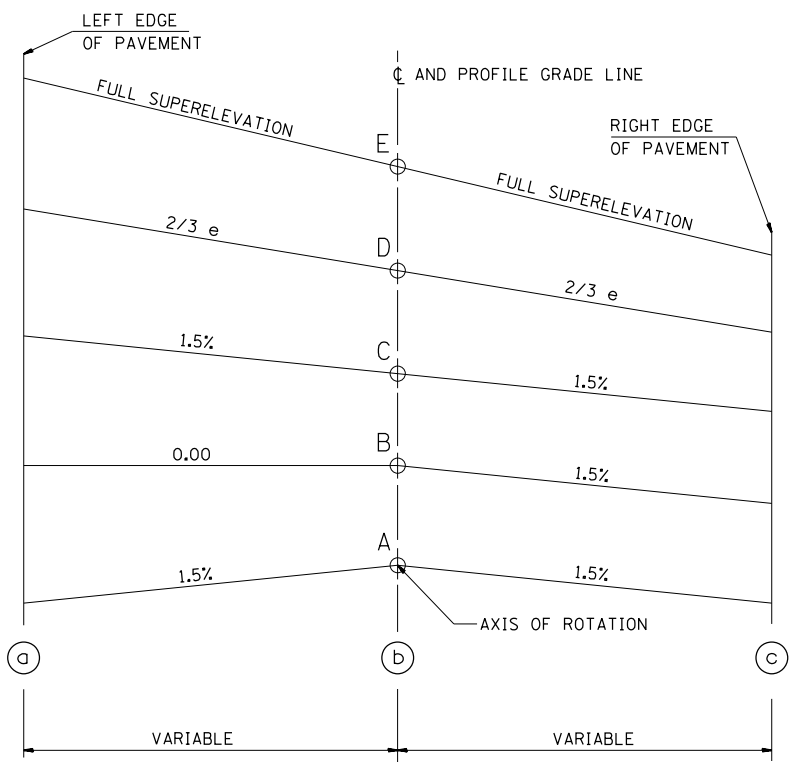


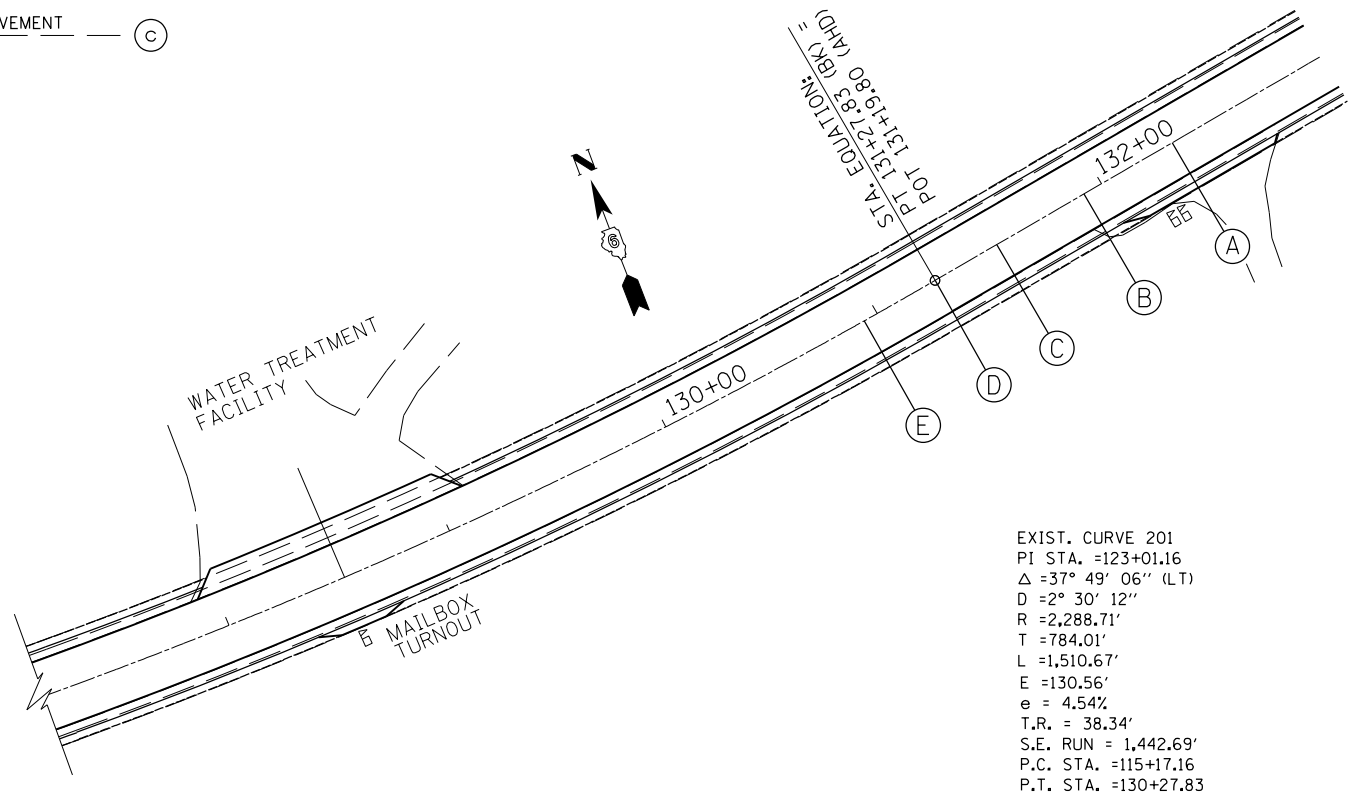
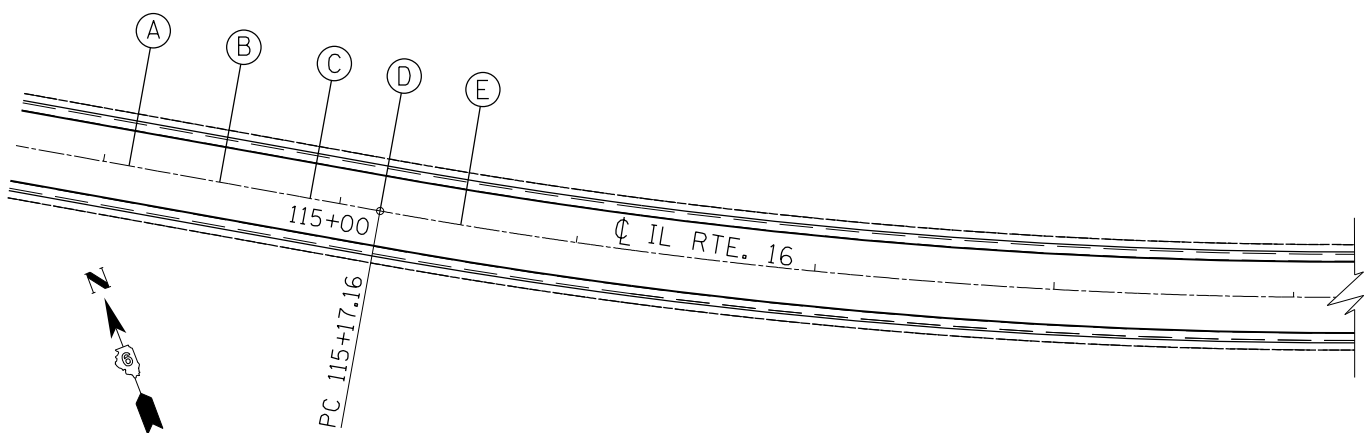
TABLE OF SUPERELEVATION BREAK POINT LOCATIONS							
CURVE NO.	e	A	B	C	D	E	TRANSITION
201	4.54%	114+10.85	114+49.19	114+87.53	115+17.16	115+51.15	Trans. In
		131+34.14	130+95.80	130+57.46	130+27.83	129+93.84	Trans. Out



TYPICAL PROFILE - S.E. TRANSITION



TYPICAL CROSS SECTION - S.E. TRANSITION



EXIST. CURVE 201
 P.I. STA. = 123+01.16
 $\Delta = 37^\circ 49' 06''$ (L.T.)
 $D = 2^\circ 30' 12''$
 $R = 2,288.71'$
 $T = 784.01'$
 $L = 1,510.67'$
 $E = 130.56'$
 $e = 4.54\%$
 $T.R. = 38.34'$
 $S.E. RUN = 1,442.69'$
 $P.C. STA. = 115+17.16$
 $P.T. STA. = 130+27.83$

•- 325, 42
 ••- (15, 21)RS-7, 22RS-4, 24RS-8

FILE NAME =	USER NAME = sparksgw	DESIGNED - RTS	REVISED -	STATE OF ILLINOIS DEPARTMENT OF TRANSPORTATION	SUPERELEVATION DETAILS		F.A.P. RTE.	SECTION	COUNTY	TOTAL SHEETS	SHEET NO.
ei:\pw\work\p\idot\sparksgw\10222005\0672067-sht-details.dgn		DRAWN - RTS	REVISED -		•	••	MONTGOMERY	80	68		
PLOT SCALE = 200.0000' / in.		CHECKED -	REVISED -		CONTRACT NO.						
PLOT DATE = Aug-25-2011 10:16:20AM		DATE - 06-16-11	REVISED -		FED. ROAD DIST. NO.	ILLINOIS FED. AID PROJECT					