

STATE OF ILLINOIS
DEPARTMENT OF TRANSPORTATION
DIVISION OF HIGHWAYS

**PROPOSED
HIGHWAY PLANS**

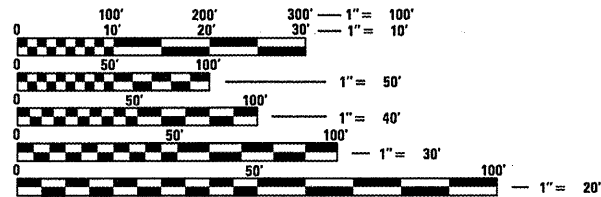
FAS ROUTE 1610 (OLD US 36)
SECTION 22RS-10
(SMART) PROJECT ACRS-HSIP-1610(102)
RESURFACING, SHOULDER RECONSTRUCTION
SCOTT COUNTY

C-96-019-10

F.A.S. RTE.	SECTION	COUNTY	TOTAL SHEETS	SHEET NO.
1610	22RS-10	SCOTT	42	1
		ILLINOIS	CONTRACT NO. 72D84	

FOR INDEX OF SHEETS, SEE SHEET NO. 2

ADT: 2100 (2010)
SU: 1.9%
MU: 2.3%
PV: 95.8%

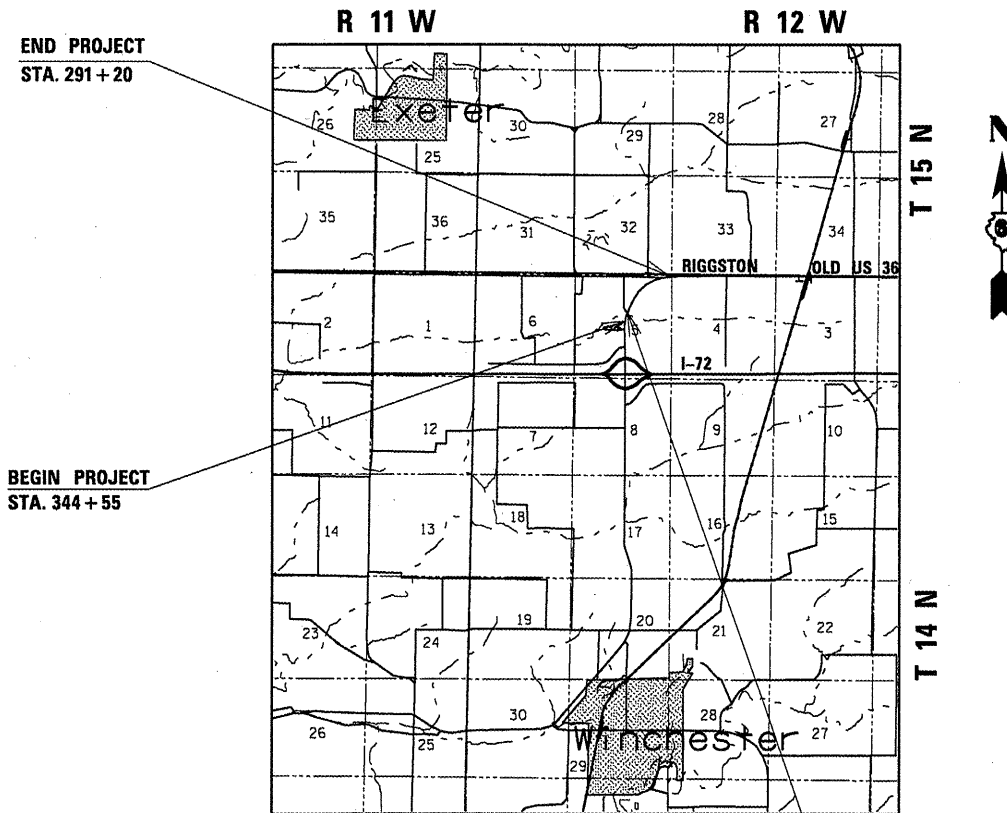


FULL SIZE PLANS HAVE BEEN PREPARED USING STANDARD ENGINEERING SCALES. REDUCED SIZED PLANS WILL NOT CONFORM TO STANDARD SCALES. IN MAKING MEASUREMENTS ON REDUCED PLANS, THE ABOVE SCALES MAY BE USED.

J.U.L.I.E.
JOINT UTILITY LOCATION INFORMATION FOR EXCAVATION
1-800-892-0123
OR 811

SENIOR TEAM ENGINEER: VINCE MADONIA (217) 785-9046
TEAM ENGINEER: JULIET SHOULTZ (217) 785-2739

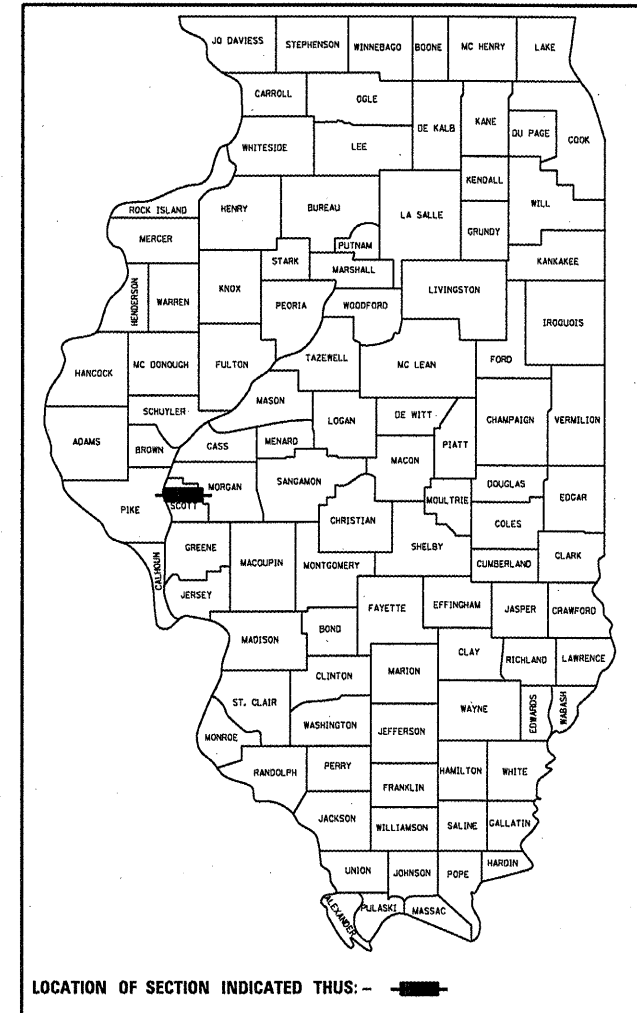
CONTRACT NO. 72D84



STATION EQUATION:
STA. 334 + 58 (BK) =
STA. 344 + 46 (AH)

GROSS LENGTH = 4,276.8 FT. = 0.81 MILE
NET LENGTH = 4,276.8 FT. = 0.81 MILE

D-96-019-10



LOCATION OF SECTION INDICATED THUS: - [black rectangle] -

STATE OF ILLINOIS
DEPARTMENT OF TRANSPORTATION
DIVISION OF HIGHWAYS

SUBMITTED August 26 20 11
Rep 20 11
DEPUTY DIRECTOR OF HIGHWAYS, REGION ENGINEER

Oct 14 20 11
Scott E. Stitt P.E. Jr
acting ENGINEER OF DESIGN AND ENVIRONMENT

Oct 14 20 11
Christine M. Roedel
DIRECTOR OF HIGHWAYS, CHIEF ENGINEER

PRINTED BY THE AUTHORITY
OF THE STATE OF ILLINOIS