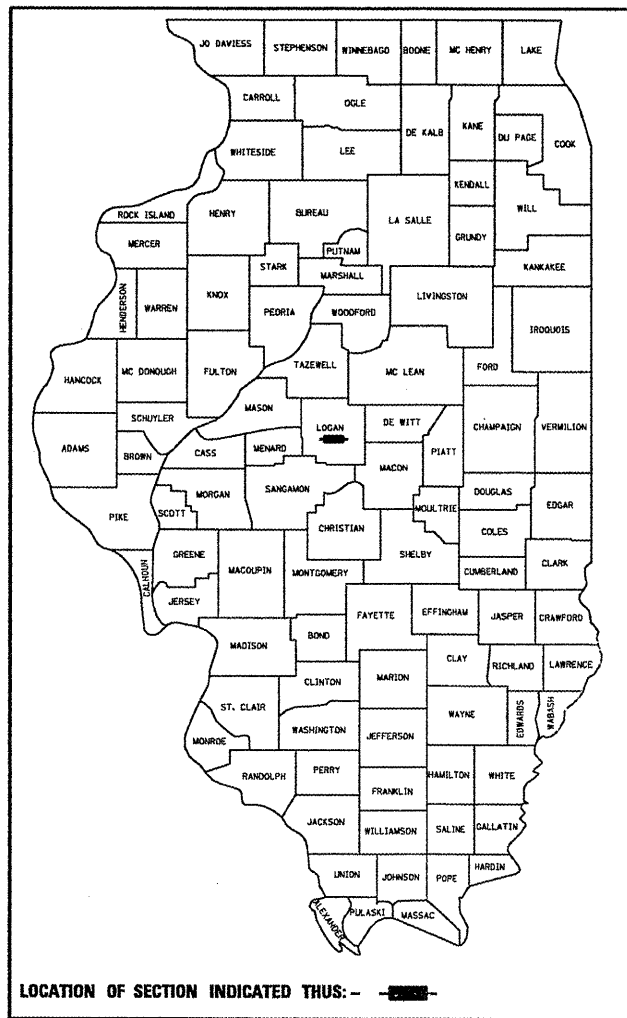


F.A.I. RTE.	SECTION	COUNTY	TOTAL SHEETS	SHEET NO.
55	D6 LOGAN CO BR 2011	LOGAN	224	1
		ILLINOIS	CONTRACT NO. 72E10	

D-96-031-11



STATE OF ILLINOIS
DEPARTMENT OF TRANSPORTATION
DIVISION OF HIGHWAYS

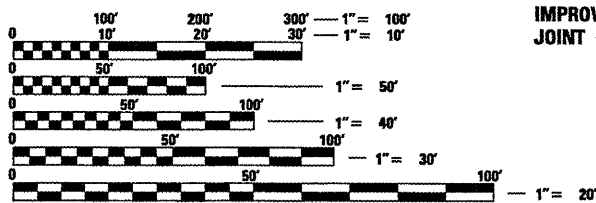
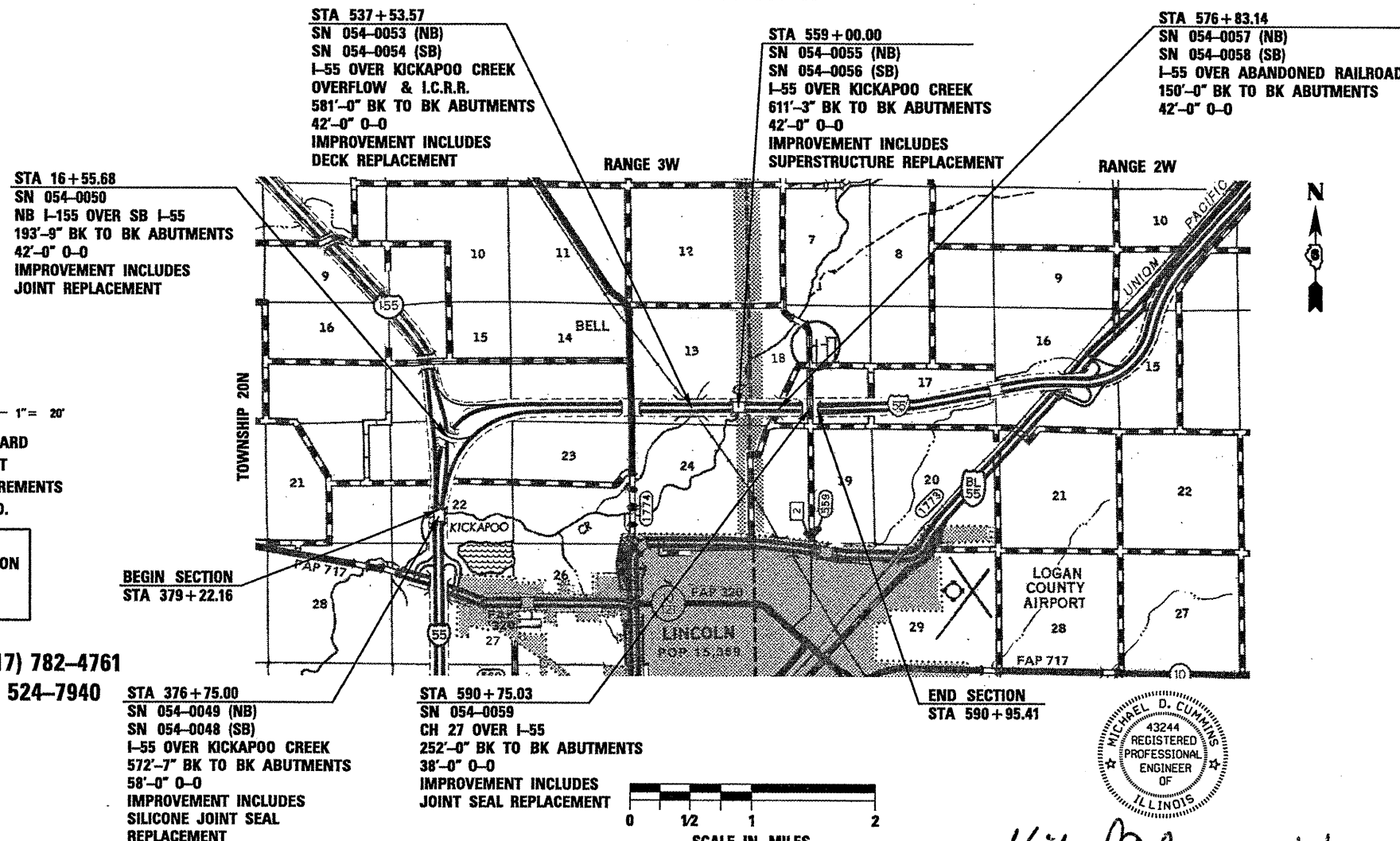
**PROPOSED
HIGHWAY PLANS**

FAI ROUTE 55 (I-55)
SECTION D6 LOGAN CO BR 2011
PROJECT ACIM-055-4(176)125
LOGAN COUNTY
BRIDGE REHABILITATION

C-96-031-11

FOR INDEX OF SHEETS, SEE SHEET NO. 2
FOR LIST OF ILLINOIS DOT HIGHWAY STANDARDS, SEE SHEET NO. 2

DESIGN DESIGNATION
FAI ROUTE 55 (I-55)
FEDERAL INTERSTATE
ADT 16,300 (2009)
67.5% PV
4.3% SU
28.2% MU
DESIGN SPEED: 70 MPH



FULL SIZE PLANS HAVE BEEN PREPARED USING STANDARD ENGINEERING SCALES. REDUCED SIZED PLANS WILL NOT CONFORM TO STANDARD SCALES. IN MAKING MEASUREMENTS ON REDUCED PLANS, THE ABOVE SCALES MAY BE USED.

J.U.L.I.E.
JOINT UTILITY LOCATION INFORMATION FOR EXCAVATION
1-800-892-0123
OR 811

PROJECT ENGINEER JEFF MYERS (217) 782-4761
TEAM MANAGER TOM COX (217) 524-7940

CONTRACT NO. 72E10



GROSS LENGTH = 19,178.29 FT. = 3.632 MILES
NET LENGTH = 5,719.64 FT. = 1.083 MILES



Michael D. Cummins 9/19/11
ILLINOIS PROFESSIONAL NO. 43244
(Expires 11/30/11)

STATE OF ILLINOIS
DEPARTMENT OF TRANSPORTATION
DIVISION OF HIGHWAYS
SUBMITTED September 12 20 11
Reg. Z. Oriskany
DEPUTY DIRECTOR OF HIGHWAYS, REGION ENGINEER
Oct 14 20 11
Scott E. Stitt, P.E.
ENGINEER OF DESIGN AND ENVIRONMENT
Oct 14 20 11
Christine M. Reedler
DIRECTOR OF HIGHWAYS, CHIEF ENGINEER

PRINTED BY THE AUTHORITY
OF THE STATE OF ILLINOIS