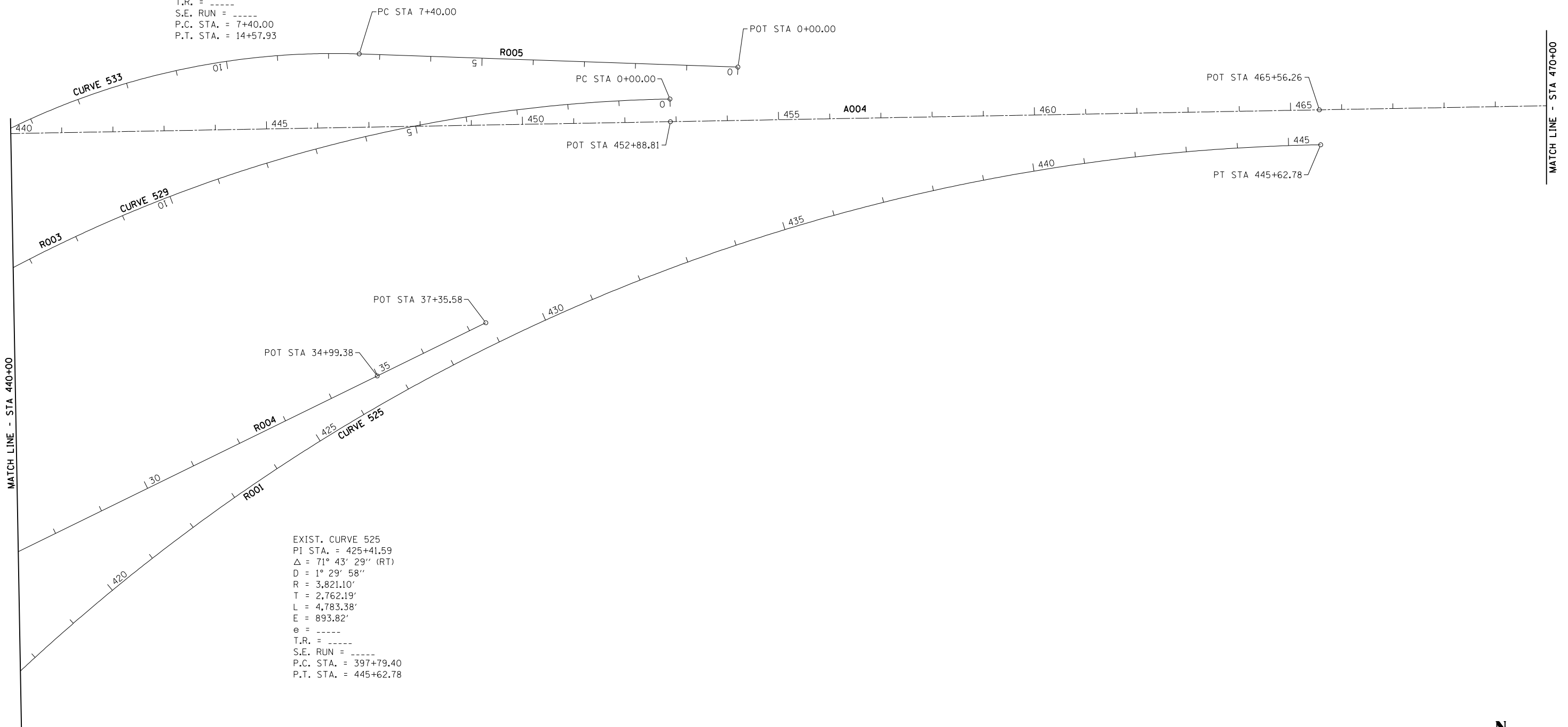


EXIST. CURVE 533
 PI STA. = 11+06.65
 $\Delta = 28^\circ 40' 39''$ (LT)
 D = 3° 59' 40"
 R = 1,434.37'
 T = 366.65'
 L = 717.93'
 E = 46.12'
 e = -----
 T.R. = -----
 S.E. RUN = -----
 P.C. STA. = 7+40.00
 P.T. STA. = 14+57.93

EXIST. CURVE 525
 PI STA. = 425+41.59
 $\Delta = 71^\circ 43' 29''$ (RT)
 D = 1° 29' 58"
 R = 3,821.10'
 T = 2,762.19'
 L = 4,783.38'
 E = 893.82'
 e = -----
 T.R. = -----
 S.E. RUN = -----
 P.C. STA. = 397+79.40
 P.T. STA. = 445+62.78



JOB = 2236.09	DESIGNED - NAK	REVISED -
FILE NAME = D672E10-shr-ATB.dgn	DRAWN - TJD	REVISED -
PLOT SCALE = 200.0000' / IN.	CHECKED - NAK	REVISED -
PLOT DATE = 9/8/2011	DATE - 8/12/2011	REVISED -

**STATE OF ILLINOIS
 DEPARTMENT OF TRANSPORTATION**

**ALIGNMENT, CROSS TIES
 & BENCHMARKS**

SCALE: SHEET NO. OF SHEETS STA. 440+00 TO STA. 470+00

F.A.I. RTE.	SECTION	COUNTY	TOTAL SHEETS	SHEET NO.
55	D6 LOGAN CO BR 2011	LOGAN	224	20
FED. ROAD DIST. NO. ILLINOIS FED. AID PROJECT			CONTRACT NO. 72E10	