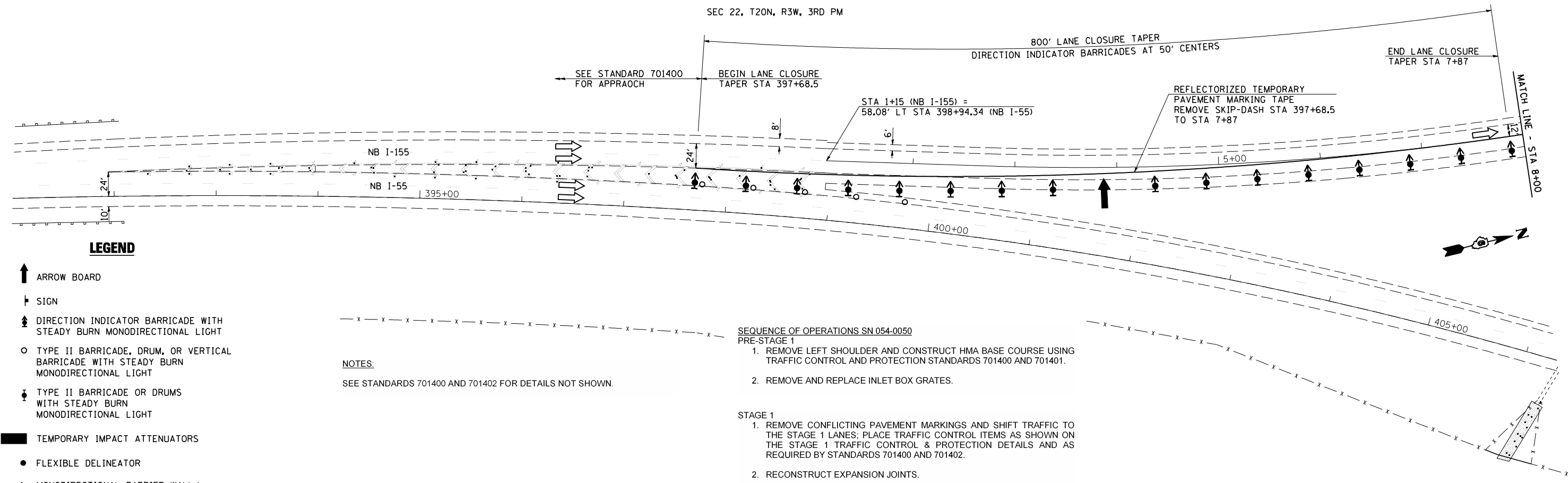


SEC 22, T20N, R3W, 3RD PM



**LEGEND**

- ↑ ARROW BOARD
- ⊥ SIGN
- ⬆ DIRECTION INDICATOR BARRICADE WITH STEADY BURN MONODIRECTIONAL LIGHT
- TYPE II BARRICADE, DRUM, OR VERTICAL BARRICADE WITH STEADY BURN MONODIRECTIONAL LIGHT
- ⬇ TYPE II BARRICADE OR DRUMS WITH STEADY BURN MONODIRECTIONAL LIGHT
- TEMPORARY IMPACT ATTENUATORS
- FLEXIBLE DELINEATOR
- ▶ MONODIRECTIONAL BARRIER WALL/ GUARDRAIL MARKER AT 25' CTRS.
- ⌌ TYPE III BARRICADE
- ▬ TEMPORARY CONCRETE BARRIER
- ▨ HMA SURFACE REMOVAL BUTT JOINT
- ▩ PAVED SHOULDER REMOVAL HMA BASE COURSE, HMA SURF COURSE
- ▧ APPROACH SLAB REMOVAL
- ▦ PAVEMENT REMOVAL

**NOTES:**

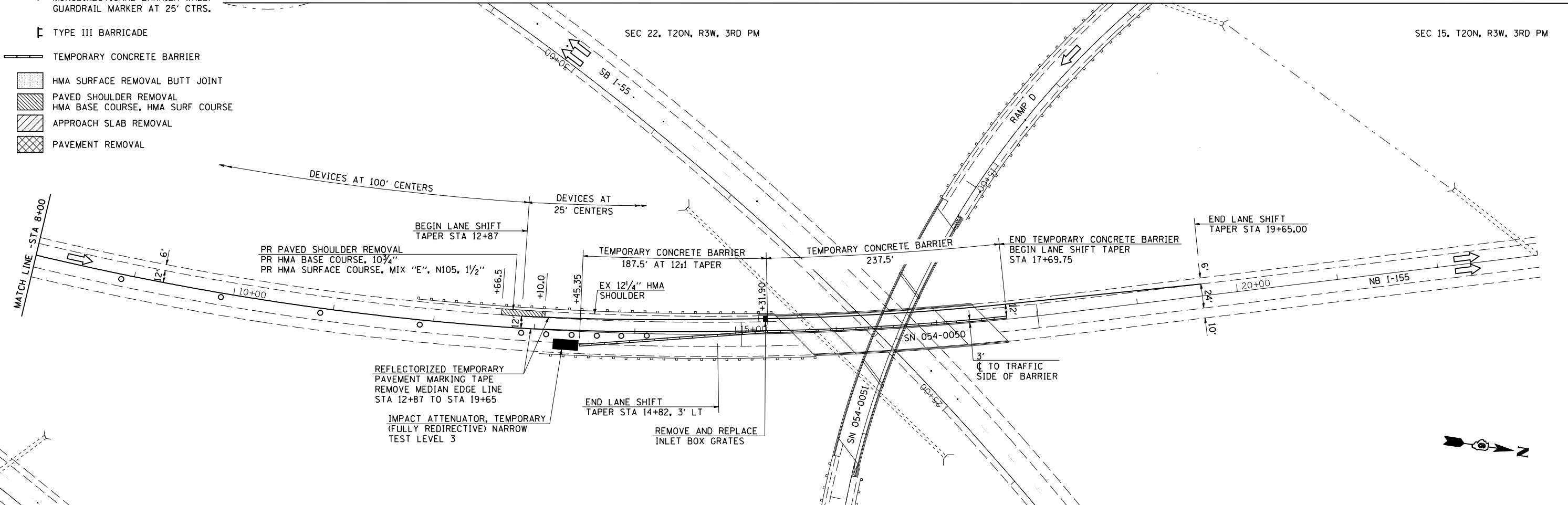
SEE STANDARDS 701400 AND 701402 FOR DETAILS NOT SHOWN.

**SEQUENCE OF OPERATIONS SN 054-0050**

- PRE-STAGE 1
1. REMOVE LEFT SHOULDER AND CONSTRUCT HMA BASE COURSE USING TRAFFIC CONTROL AND PROTECTION STANDARDS 701400 AND 701401.
  2. REMOVE AND REPLACE INLET BOX GRATES.
- STAGE 1
1. REMOVE CONFLICTING PAVEMENT MARKINGS AND SHIFT TRAFFIC TO THE STAGE 1 LANES; PLACE TRAFFIC CONTROL ITEMS AS SHOWN ON THE STAGE 1 TRAFFIC CONTROL & PROTECTION DETAILS AND AS REQUIRED BY STANDARDS 701400 AND 701402.
  2. RECONSTRUCT EXPANSION JOINTS.

SEC 22, T20N, R3W, 3RD PM

SEC 15, T20N, R3W, 3RD PM



JOB = 2236.9  
 FILE NAME = D672E10-sh1-stg1.dgn  
 PLOT SCALE = 100.0000 "/> IN.  
 PLOT DATE = 9/8/2011

DESIGNED - NAK  
 DRAWN - TJD  
 CHECKED - NAK  
 DATE - 8/12/2011

REVISED -  
 REVISED -  
 REVISED -  
 REVISED -

**STATE OF ILLINOIS  
 DEPARTMENT OF TRANSPORTATION**

**STAGE 1 TRAFFIC CONTROL & PROTECTION DETAIL**

SCALE: SHEET NO. OF SHEETS STA. 1+15 TO STA. 23+00

F.A.I. RTE.	SECTION	COUNTY	TOTAL SHEETS	SHEET NO.
55	D6 LOGAN CO BR 2011	LOGAN	224	54
FED. ROAD DIST. NO. ILLINOIS FED. AID PROJECT			CONTRACT NO. 72E10	