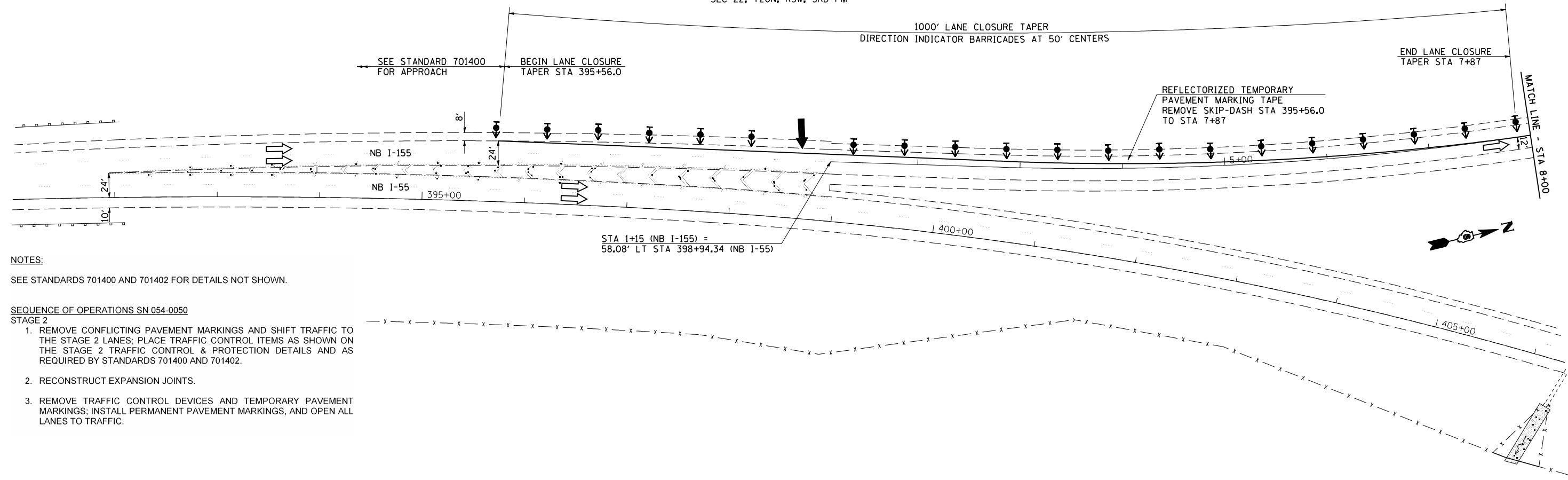


SEC 22, T20N, R3W, 3RD PM



NOTES:

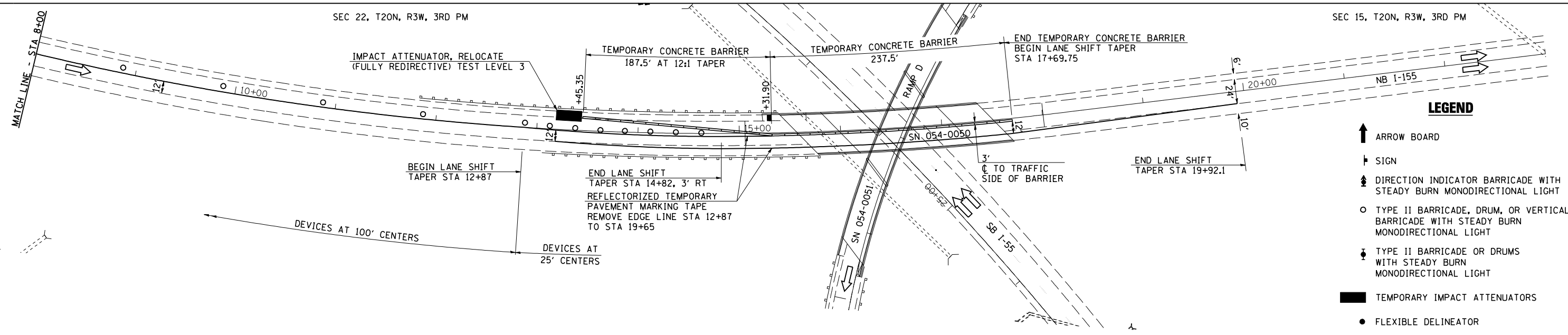
SEE STANDARDS 701400 AND 701402 FOR DETAILS NOT SHOWN.

SEQUENCE OF OPERATIONS SN 054-0050
STAGE 2

1. REMOVE CONFLICTING PAVEMENT MARKINGS AND SHIFT TRAFFIC TO THE STAGE 2 LANES; PLACE TRAFFIC CONTROL ITEMS AS SHOWN ON THE STAGE 2 TRAFFIC CONTROL & PROTECTION DETAILS AND AS REQUIRED BY STANDARDS 701400 AND 701402.
2. RECONSTRUCT EXPANSION JOINTS.
3. REMOVE TRAFFIC CONTROL DEVICES AND TEMPORARY PAVEMENT MARKINGS; INSTALL PERMANENT PAVEMENT MARKINGS, AND OPEN ALL LANES TO TRAFFIC.

SEC 22, T20N, R3W, 3RD PM

SEC 15, T20N, R3W, 3RD PM



LEGEND

- ↑ ARROW BOARD
- † SIGN
- ⚡ DIRECTION INDICATOR BARRICADE WITH STEADY BURN MONODIRECTIONAL LIGHT
- TYPE II BARRICADE, DRUM, OR VERTICAL BARRICADE WITH STEADY BURN MONODIRECTIONAL LIGHT
- ⚡ TYPE II BARRICADE OR DRUMS WITH STEADY BURN MONODIRECTIONAL LIGHT
- TEMPORARY IMPACT ATTENUATORS
- FLEXIBLE DELINEATOR
- ▶ MONODIRECTIONAL BARRIER WALL/ GUARDRAIL MARKER AT 25' CTRS.
- ▬ TYPE III BARRICADE
- ▬ TEMPORARY CONCRETE BARRIER
- ▨ HMA SURFACE REMOVAL BUTT JOINT
- ▩ PAVED SHOULDER REMOVAL HMA BASE COURSE
- ▧ APPROACH SLAB REMOVAL
- ▦ PAVEMENT REMOVAL



JOB = 2236.9	DESIGNED - NAK	REVISED -
FILE NAME = D672E10-shr-stg2.dgn	DRAWN - TJD	REVISED -
PLOT SCALE = 100.0000' / IN.	CHECKED - NAK	REVISED -
PLOT DATE = 9/8/2011	DATE - 8/12/2011	REVISED -

STATE OF ILLINOIS
DEPARTMENT OF TRANSPORTATION

STAGE 2 TRAFFIC CONTROL & PROTECTION DETAIL

SCALE: SHEET NO. OF SHEETS STA. 391+00 TO STA. 23+00

F.A.I. RTE.	SECTION	COUNTY	TOTAL SHEETS	SHEET NO.
55	D6 LOGAN CO BR 2011	LOGAN	224	55
FED. ROAD DIST. NO. ILLINOIS FED. AID PROJECT			CONTRACT NO. 72E10	