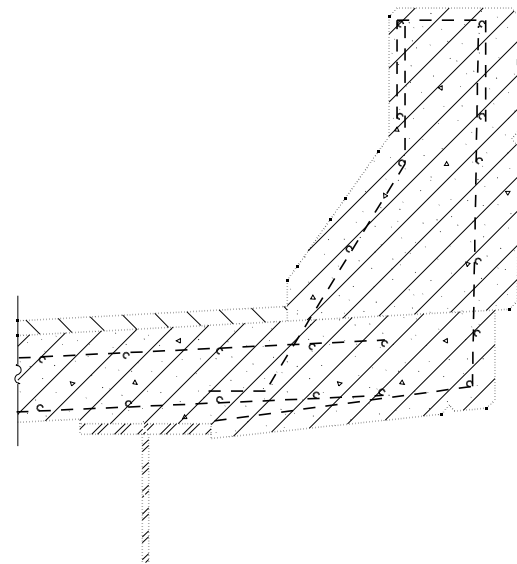
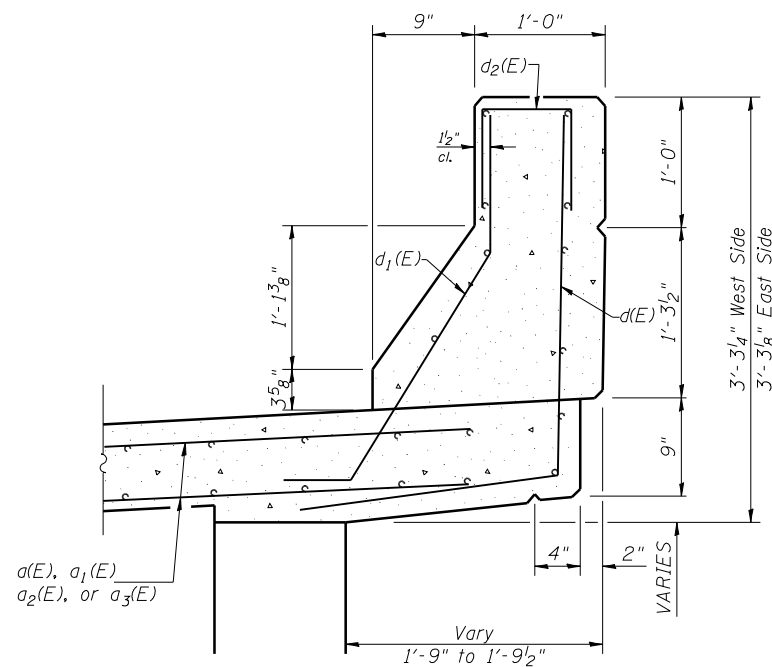
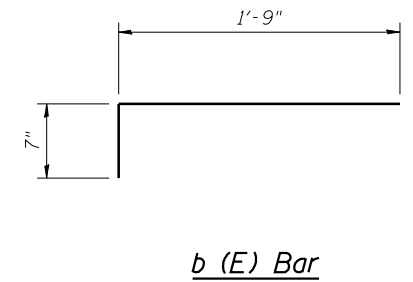
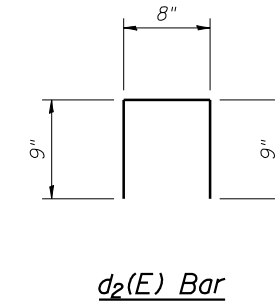
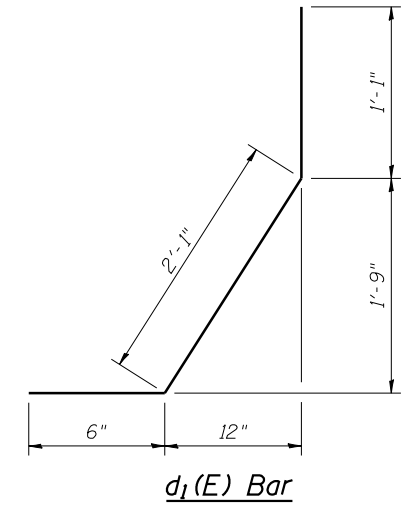
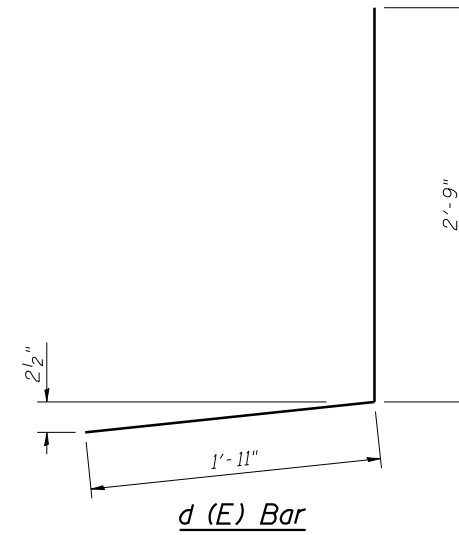


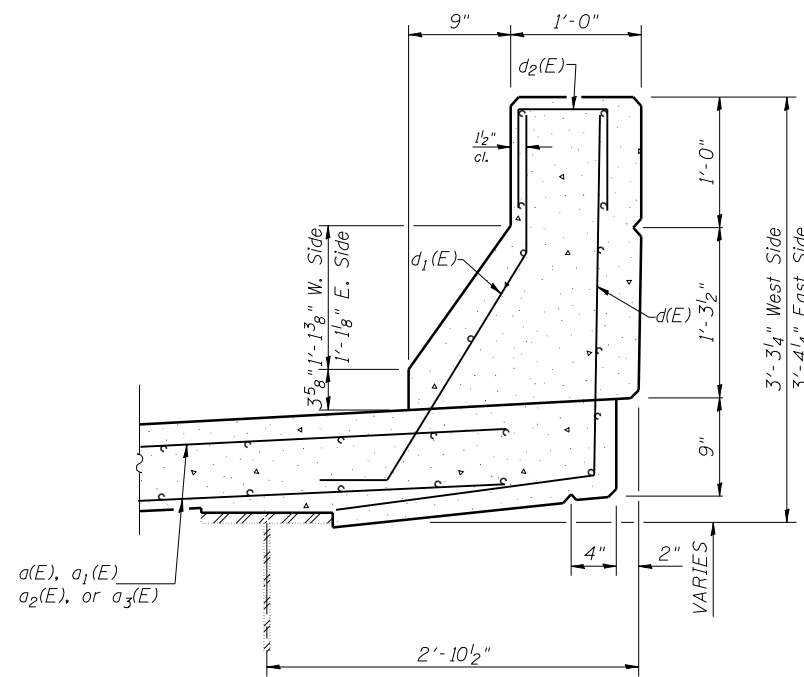
SECTION THROUGH PARAPET AND SOFFIT  
APPROACH SPAN REMOVAL



SECTION THROUGH PARAPET AND SOFFIT  
MAIN SPAN REMOVAL



SECTION THROUGH PARAPET AND SOFFIT  
APPROACH SPAN CONSTRUCTION



SECTION THROUGH PARAPET AND SOFFIT  
MAIN SPAN CONSTRUCTION

**BILL OF MATERIAL**

| Bar                              | No. | Size | Length  | Shape |
|----------------------------------|-----|------|---------|-------|
| d(E)                             | 18  | 6    | 28'-3"  | —     |
| a1(E)                            | 18  | 6    | 23'-1"  | —     |
| a2(E)                            | 18  | 6    | 27'-3"  | —     |
| a3(E)                            | 18  | 6    | 22'-3"  | —     |
| b(E)                             | 80  | 6    | 2'-4"   | ┌     |
| d(E)                             | 24  | 5    | 4'-8"   | J     |
| d1(E)                            | 24  | 5    | 3'-8"   | J     |
| d2(E)                            | 8   | 5    | 2'-2"   | Π     |
| Reinforcement Bars, Epoxy Coated |     |      | Pound   | 3510  |
| Concrete Removal                 |     |      | Cu. Yd. | 14.6  |
| Concrete Superstructure          |     |      | Cu. Yd. | 14.3  |
| Bar Splicers                     |     |      | Each    | 36    |

Reinforcement bars designated as (E) shall be epoxy coated.

Note: Existing longitudinal reinforcement bars in the area of slab removal and existing transverse reinforcement bars projecting from the curb or parapet shall be cleaned and incorporated into the new construction.

Any reinforcement bars that are damaged during concrete removal operations shall be repaired or replaced using an approved bar splicer or anchorage system. Cost included with CONCRETE REMOVAL.