

**GENERAL NOTES**

Fasteners shall be AASHTO M164 Type 1, mechanically galvanized bolts. Bolts 7/8 in.  $\phi$ , holes 5/8 in.  $\phi$ , unless otherwise noted.

No field welding is permitted except as specified in the contract documents. Reinforcement bars shall conform to the requirements of ASTM A 706 Gr 60.

Reinforcement bars designated (E) shall be epoxy coated.

Prior to pouring the new concrete deck, all heavy or loose rust, loose mill scale, and other loose or potentially detrimental foreign material shall be removed from the surfaces in contact with concrete. Tightly adhered paint may remain unless otherwise noted. Removal shall be accomplished by methods that will not damage the steel and the cost will be included in the pay item covering removal of the existing concrete.

As directed by the Engineer, existing construction accessories welded to the top flange of beams and girders shall be removed. The weld areas shall be ground flush and inspected for cracks using magnetic particle testing (MT) or dye penetrant testing (PT) by qualified personnel approved by the Engineer.

Any cracks that cannot be removed by grinding 1/4 inch deep shall be identified and reported to the Bureau of Bridges and Structures for further disposition. The cost of removing welded accessories, grinding and inspecting weld areas and grinding cracks will be paid for according to Article 109.04 of the Standard Specifications.

If the Contractor elects to use cantilever forming brackets on the exterior beams or girders, the brackets shall be placed at the same locations as required for the hardwood blocks in Article 503.06(b) of the Standard Specifications. If additional cantilever forming brackets are required, hardwood blocking shall be wedged between the exterior and first interior beam at each of these additional bracket locations.

Plan dimensions and details relative to existing plans are subject to nominal construction variations. The Contractor shall field verify existing dimensions and details affecting new construction and make necessary approved adjustments prior to construction or ordering of materials. Such variations shall not be cause for additional compensation for a change in scope of the work, however, the Contractor will be paid for the quantity actually furnished at the unit price bid for the work.

New bearing seat surfaces shall be constructed or adjusted to the designated elevations within a tolerance of 1/8 inch (0.01 ft.). Adjustment shall be made either by grinding the surface or by shimming the bearings.

Concrete Sealer shall be applied to the designated areas of the abutments and piers.

The concrete for bridge decks finished according to Article 503.16(a) of the Standard Specifications shall be placed and compacted parallel to the skew in uniform increments along centerline of bridge. The machine used for finishing shall be set parallel to the skew for striking off and screeding the concrete.

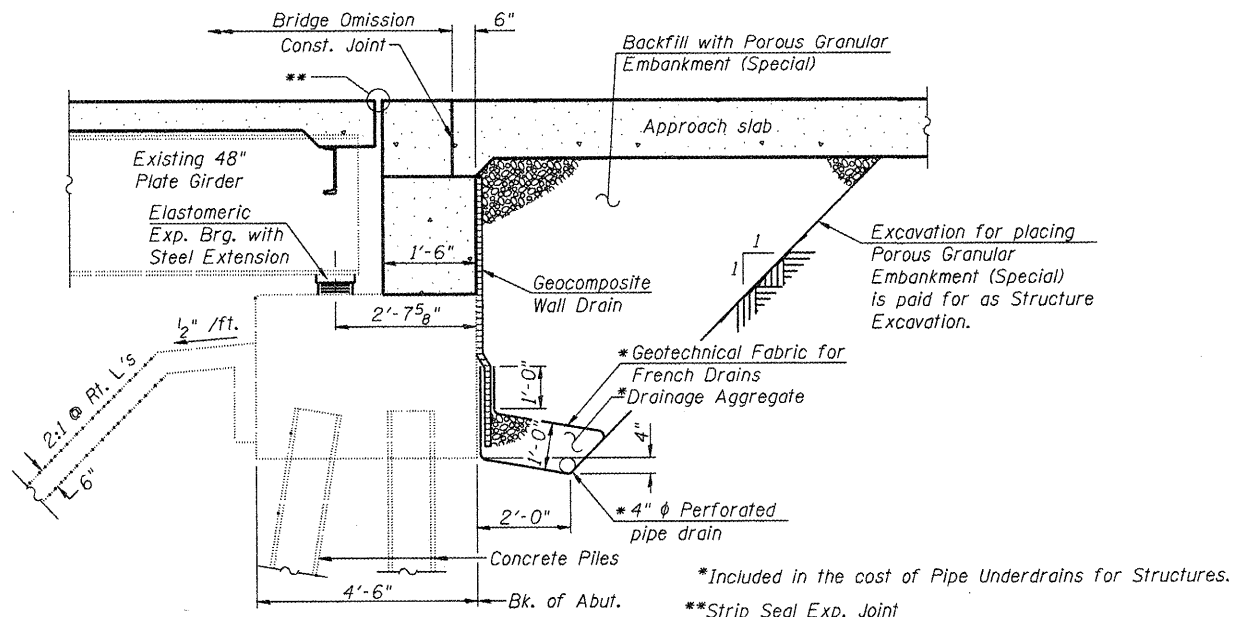
Slipforming of the parapets is not allowed.

Cleaning and painting of the structural steel shall be as specified in the special provision for "Cleaning and Painting Existing Steel Structures". All beams, bearings and other structural steel within 10 ft (measured along the beam) of either side of the deck joints shall be cleaned per Near White Blast Cleaning - SSPC-SP10

The designated areas cleaned per Near White Blast Cleaning and per Commercial Grade Power Tool Cleaning shall be painted according to the requirements of Paint System 1 - OZ/E/U. The color of the final finish coat for all surfaces shall be Interstate Green, Munsell No. 7.5G 4/8.

All new structural steel shall be shop painted with an inorganic zinc rich primer per AASHTO M300, Type 1.

Location No. 1 = S.N. 054-0053  
Location No. 2 = S.N. 054-0054



**SECTION THRU PILE SUPPORTED STUB ABUTMENT**

(Horiz. dim. @ Rt. L's)

STATION 537+53.57  
BUILT 20\_\_ BY  
STATE OF ILLINOIS  
F.A.I. RT. 55  
SEC. D6 LOGAN CO BR 2011  
LOADING HS 20-44  
STRUCTURE NO. 054-0054

STATION 537+53.57  
BUILT 20\_\_ BY  
STATE OF ILLINOIS  
F.A.I. RT. 55  
SEC. D6 LOGAN CO BR 2011  
LOADING HS 20-44  
STRUCTURE NO. 054-0053

Existing name plate shall be cleaned and placed next to the new name plate. Cost included in "Name Plates".

**NAME PLATE**

See Std. 515001

**DESIGN SCOUR ELEVATION TABLE**

Design Scour Elevation (ft.)	Structure No.	W. Abut.	Pier 1	Pier 2	Pier 3	Pier 4	E. Abut.
	054-0053	586.85	554.15	554.55	554.30	554.04	587.41
	054-0054	587.93	554.31	554.15	554.41	554.01	585.96

**WATERWAY INFORMATION**

Frequency Year	Structure	Discharge (cfs)		Waterway Opening (sq. ft.)		Natural H.W.E.	Head (ft.)		Headwater Elev.		
		Exist.	Prop.	Exist.	Prop.		Exist.	Prop.	Exist.	Prop.	
		Existing Low Grade Elev. 573.95 ft @ Sta. 556+50 (SB Median EOP) Proposed Low Grade Elev. 574.16 ft @ Sta. 556+50 (SB Median EOP)									
Design	10	Main Channel	6,160	6,160	1,546	1,546	565.5	1.0	1.0	566.5	566.5
		Overflow	3,940	3,940	1,147	1,147					
		Total	10,100	10,100	2,693	2,693					
Design	50	Main Channel	10,937	10,937	2,313	2,313	566.9	1.4	1.4	568.3	568.3
		Overflow	7,463	7,463	1,168	1,168					
		Total	18,400	18,400	3,481	3,481					
Base	100	Main Channel	14,728	14,728	2,765	2,765	567.7	1.6	1.6	569.3	569.3
		Overflow	8,072	8,072	1,214	1,214					
		Total	22,800	22,800	3,979	3,979					
Max.	500	Main Channel	21,447	22,712	3,501	4,070	570.0	3.2	2.7	573.2	572.7
		Overflow	14,453	13,188	1,503	1,503					
		Total	35,900	35,900	5,004	5,573					

10 Yr. Vel. thru Exist. Main Channel Bridges = 4.0 fps      10 Yr. Vel. thru Prop. Main Channel Bridges = 4.0 fps  
10 Yr. Vel. thru Exist. Overflow Bridges = 3.4 fps      10 Yr. Vel. thru Prop. Overflow Bridges = 3.4 fps

**INDEX OF SHEETS**

- 1 General Plan & Elevation
- 2 General Data
- 3-4 Scour Countermeasure Details
- 5-8 Top of Slab Elevations, NB
- 9-12 Top of Slab Elevations, SB
- 13-14 Top of Approach Slab Elevations, NB
- 15-16 Top of Approach Slab Elevations, SB
- 17-18 Superstructure
- 19-21 Superstructure Details
- 22-23 Bridge Approach Slab Details
- 24 Drainage Scupper, DS-II
- 25 Preformed Joint Strip Seal
- 26 Structural Steel Unit 1
- 27 Structural Steel Unit 2
- 28 Structural Steel Details
- 29-32 Bearing Details
- 33 Concrete Repairs at Abutments
- 34-37 Concrete Removal / Repairs at Piers
- 38-39 Abutment Concrete Removal
- 40-42 Abutment Details
- 43 Pier 3 SB
- 44 Pier 2 NB
- 45 Bar Splicer Details

**TOTAL BILL OF MATERIAL**

ITEM	UNIT	SUPER	SUB	TOTAL
Stone Riprap, Class A4	Ton		2,060	2,060
Filter Fabric	Sq. Yd.		512	512
Concrete Removal	Cu. Yd.		243.8	243.8
Removal of Existing Concrete Deck	Each	2		2
Protective Shield	Sq. Yd.	1,343		1,343
Structure Excavation	Cu. Yd.		1,063	1,063
Floor Drains	Each	56		56
Concrete Structures	Cu. Yd.		359.1	359.1
Concrete Superstructure	Cu. Yd.	2,111.6		2,111.6
Bridge Deck Grooving	Sq. Yd.	5,736		5,736
Protective Coat	Sq. Yd.	7,205		7,205
Furnishing and Erecting Structural Steel	Pound	36,995		36,995
Stud Shear Connectors	Each	18,612		18,612
Reinforcement Bars, Epoxy Coated	Pound	534,220	39,470	573,690
Bar Splicers	Each	280		280
Name Plates	Each	2		2
Preformed Joint Strip Seal	Foot	432		432
Elastomeric Bearing Assembly, Type I	Each	36		36
Elastomeric Bearing Assembly, Type II	Each	12		12
Anchor Bolts 5/8"	Each	24		24
Anchor Bolts 1"	Each	72		72
Concrete Sealer	Sq. Ft.		5,965	5,965
Geocomposite Wall Drain	Sq. Yd.		338	338
Porous Granular Embankment, Special	Cu. Yd.		1,063	1,063
Jack and Remove Existing Bearings	Each		24	24
Structural Repair of Concrete (Depth Equal to or Less Than 5 Inches)	Sq. Ft.		88	88
Drainage Scupper DS-II	Each	6		6
Pipe Underdrains for Structures 4"	Foot		410	410
Temporary Support System	L. Sum	1		1
Removal of Existing Bearings	Each		24	24
Diamond Grinding (Bridge Section)	Sq. Yd.	5,451		5,451
Cleaning and Painting Steel Bridge No. 1	L. Sum	1		1
Cleaning and Painting Steel Bridge No. 2	L. Sum	1		1
Containment and Disposal of Non-Lead Paint Cleaning Residues No. 1	L. Sum	1		1
Containment and Disposal of Non-Lead Paint Cleaning Residues No. 2	L. Sum	1		1



JOB = 2265.1	DESIGNED - AAN	REVISED -
FILE # FILES#	CHECKED - MDC	REVISED -
DATE = 10/14/2011	DRAWN - TJD	REVISED -
	CHECKED - MDC	REVISED -

**STATE OF ILLINOIS  
DEPARTMENT OF TRANSPORTATION**

**GENERAL DATA**  
**STRUCTURE NO. 054-0053 (NB) & STRUCTURE NO. 054-0054 (SB)**  
SHEET NO. 2 OF 45 SHEETS

F.A.I. RT.	SECTION	COUNTY	TOTAL SHEETS	SHEET NO.
55	D6 LOGAN CO BR 2011	LOGAN	224	118
CONTRACT NO. 72E10				
ILLINOIS FED. AID PROJECT				