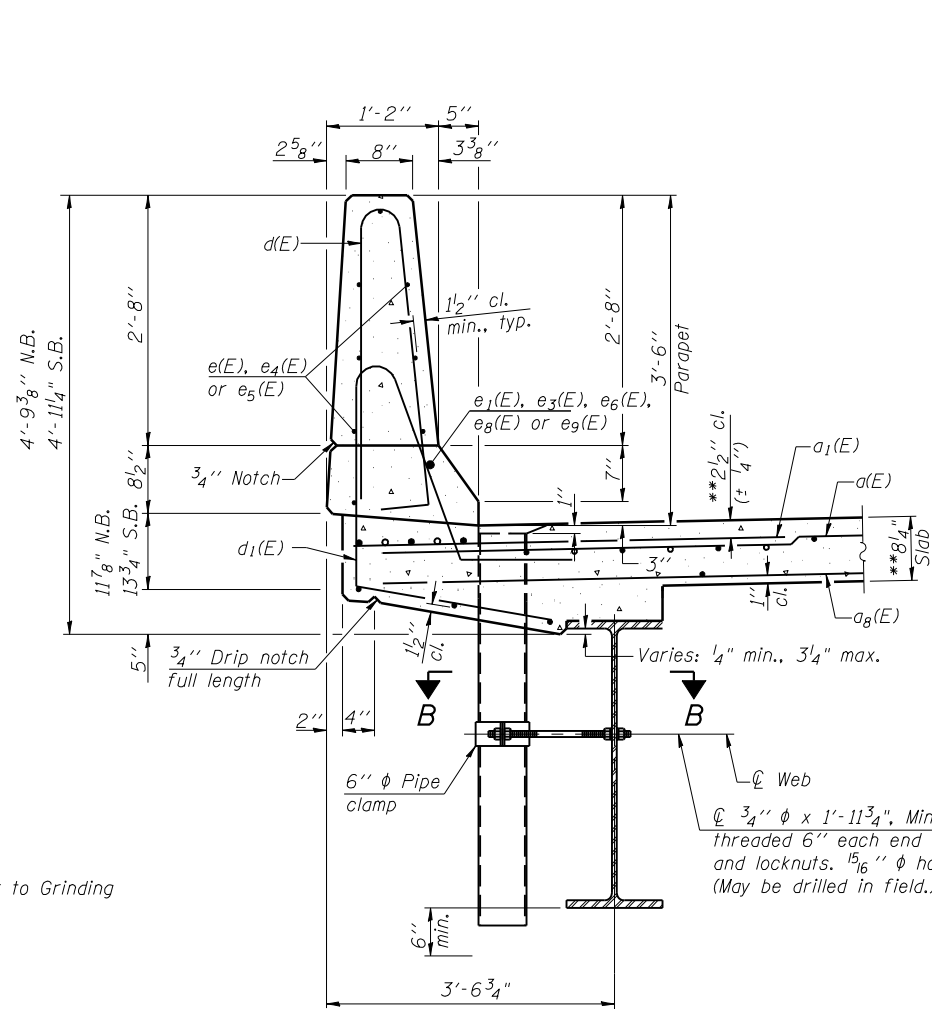
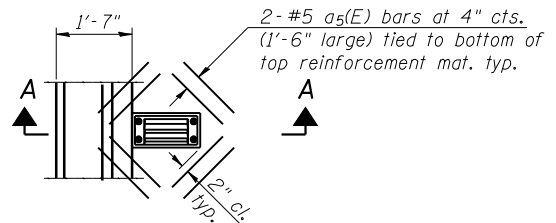


**SECTION A-A THRU PARAPET
SHOWING SCUPPER INSTALLATION**

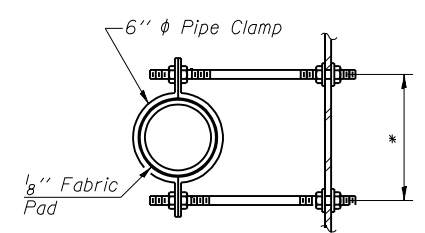


**SECTION THRU PARAPET
SHOWING FLOOR DRAIN INSTALLATION**

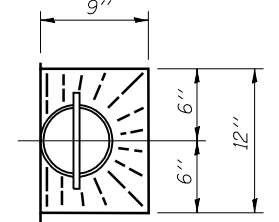


PLAN

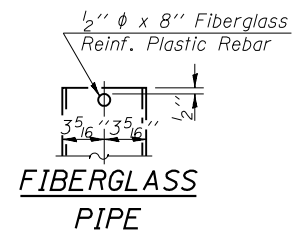
Note:
Cut longitudinal reinforcement to clear drainage scuppers.



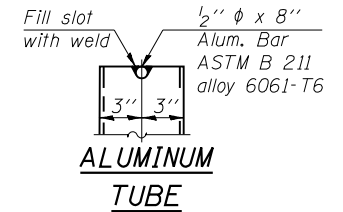
SECTION B-B
* Dimension as required by Pipe Clamp



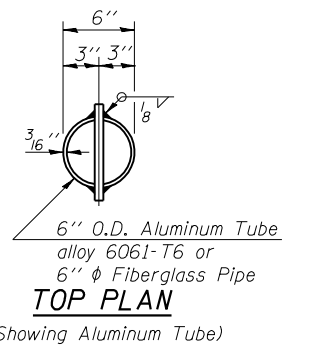
TOP PLAN



**FIBERGLASS
PIPE**



**ALUMINUM
TUBE**



TOP PLAN
(Showing Aluminum Tube)

Notes:
Drains shall be located clear of all diaphragms.
The exterior surfaces of the floor drains shall be painted with the finish coat as specified in the special provisions for Cleaning and Painting New Metal Structures. The exterior surfaces of the drains shall be cleaned according to the Society of Protective Coatings' Spec. SSPC-SP1 prior to painting.
Fiberglass pipe shall conform to ASTM D 2996, with short-time rupture strength hoop tensile stress of 30,000 p.s.i. minimum.
Galvanize clamping device according to AASHTO M232. Cost of clamping device and inserts is included with Floor Drains.