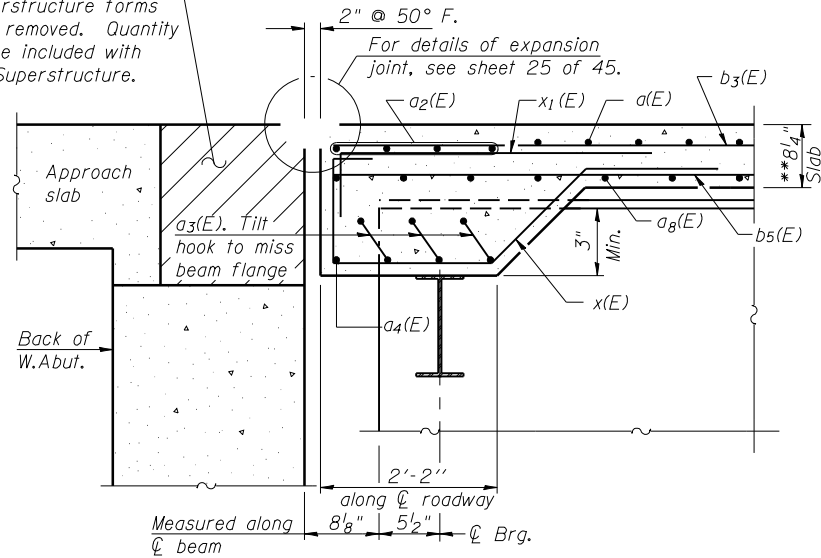
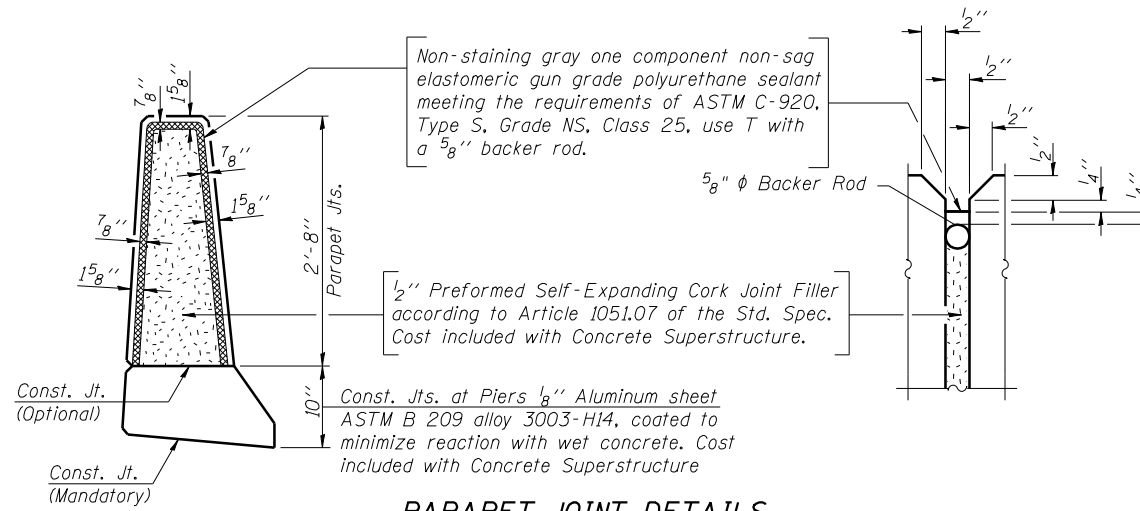


Hatched area to be poured after superstructure forms have been removed. Quantity of concrete included with Concrete Superstructure.

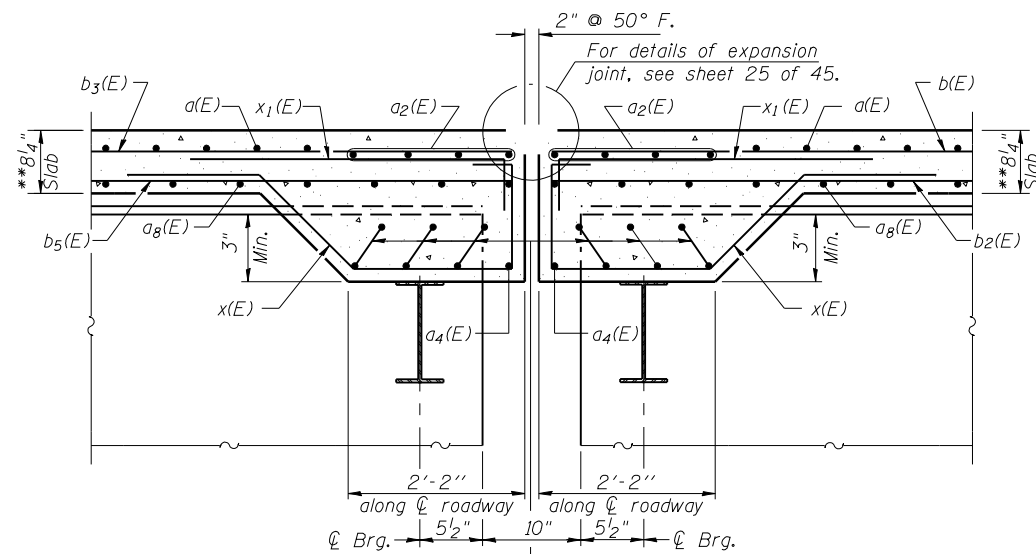


SECTION A-A

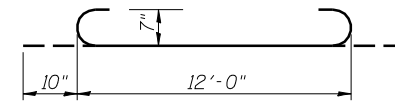
** Prior to Grinding



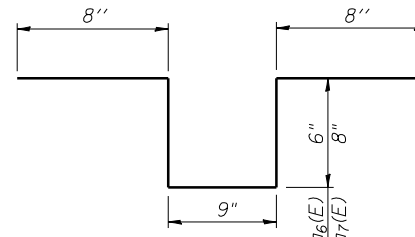
PARAPET JOINT DETAILS



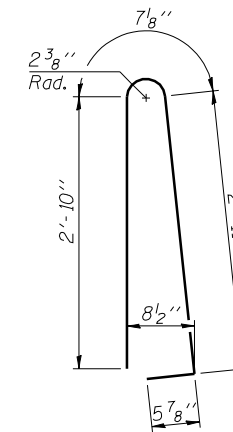
SECTION B-B THRU JOINT AT PIER



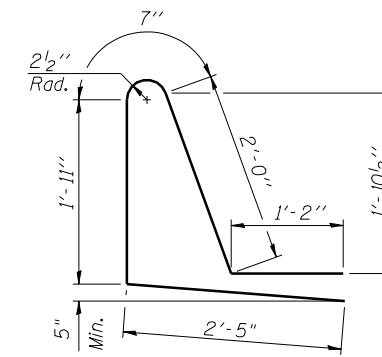
BAR a3(E)



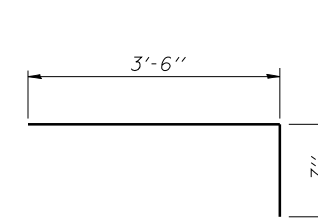
BAR a6(E), a7(E)



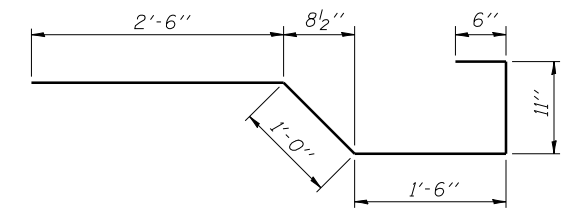
BAR d(E)



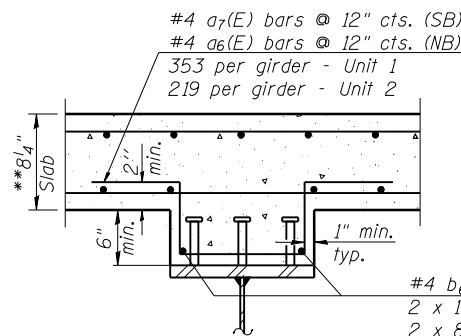
BAR d1(E)



BAR x1(E)



BAR x(E)



SECTION THRU FILLET

#4 b6(E) bars typ.
2 x 13 per girder - Unit 1
2 x 8 per girder - Unit 2
(This bar may be placed inside the shear stud when minimum clearances cannot be satisfied).

TWO (2) SUPERSTRUCTURES
BILL OF MATERIAL

Bar	No.	Size	Length	Shape
a(E)	2496	#5	42'-6"	---
a1(E)	4984	#6	6'-6"	---
a2(E)	64	#7	38'-4"	---
a3(E)	120	#7	13'-8"	U
a4(E)	16	#7	33'-4"	---
a5(E)	48	#5	1'-6"	---
a6(E)	3432	#4	3'-1"	---
a7(E)	3432	#4	3'-5"	---
a8(E)	1526	#5	41'-6"	---
b(E)	1380	#5	26'-7"	---
b1(E)	344	#6	31'-8"	---
b2(E)	936	#5	30'-3"	---
b3(E)	920	#5	24'-11"	---
b4(E)	172	#6	25'-7"	---
b5(E)	648	#5	27'-4"	---
b6(E)	504	#4	29'-3"	---
d(E)	2504	#5	6'-10"	U
d1(E)	2504	#5	8'-1"	U
e(E)	344	#4	18'-0"	---
e1(E)	24	#8	33'-11"	---
e2(E)	32	#4	24'-5"	---
e3(E)	8	#8	18'-0"	---
e4(E)	268	#4	19'-8"	---
e5(E)	280	#4	17'-2"	---
e6(E)	24	#8	32'-6"	---
e7(E)	32	#4	23'-3"	---
e8(E)	16	#8	19'-8"	---
e9(E)	16	#8	28'-10"	---
e10(E)	16	#4	26'-6"	---
x(E)	240	#5	6'-5"	---
x1(E)	320	#5	4'-1"	---
Reinforcement Bars, Epoxy Coated			Pound	454,020
Concrete Superstructure			Cu. Yds.	1,806.6

Bars indicated thus 1 x 3 - #8 etc. indicates 1 line of bars with 3 lengths per line.