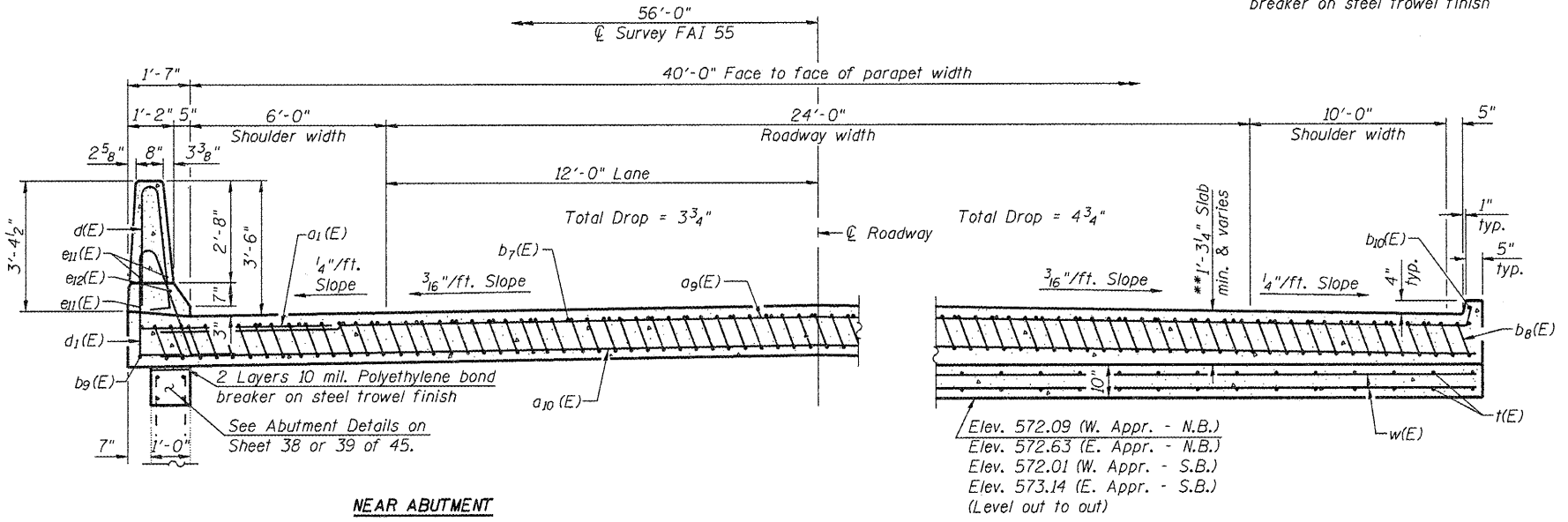
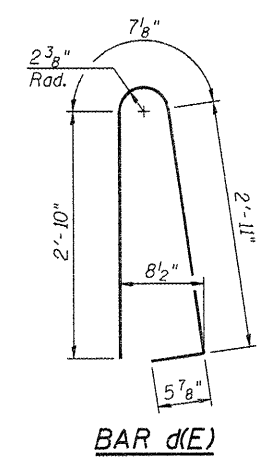


SECTION C-C

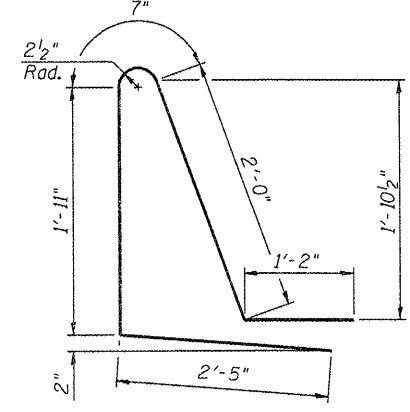
Notes:
 See sheet 22 of 45 for Detail A and View B-B.
 Approach slab and parapet concrete shall be paid for as Concrete Superstructure.
 Approach footing concrete shall be paid for as Concrete Structures.
 Reinforcement shall be paid for as Reinforcement Bars, Epoxy Coated.
 For v(E) bar details, see sheet 40 of 45.
 The approach footing maximum applied service bearing pressure (Q_{max}) = 2.0 ksf.
 For bar splicer details, see sheet 43 of 45.
 Cost of excavation for approach footing included with Concrete Structures.
 For Porous Granular Embankment (Special) and drainage treatment details, see sheet 2 of 45.
 For additional parapet details, see sheet 20 of 45.



SECTION D-D
 (See Plan for dimensions not shown)
 (Looking in direction of traffic)

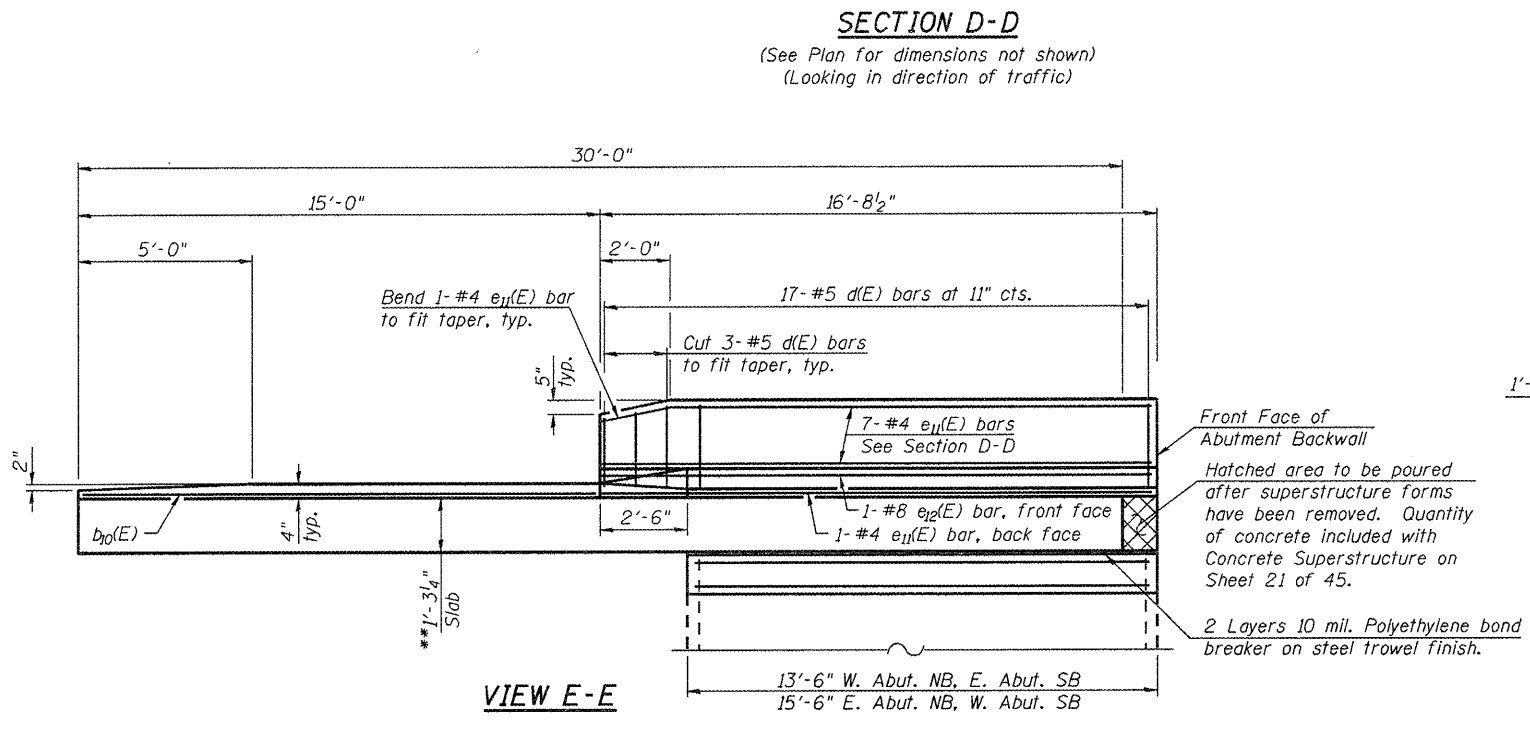


BAR d(E)

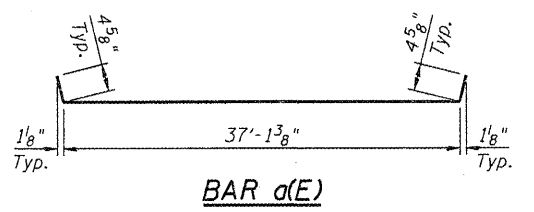


BAR d1(E)

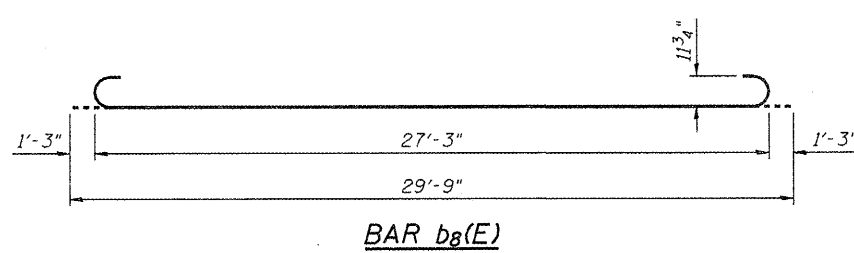
* Tilt #9 b8(E) bars as required to maintain clearance.
 *** Cost included with Concrete Superstructure.
 ** Prior to Grinding



VIEW E-E



BAR a(E)



BAR b8(E)

**FOUR APPROACHES
 BILL OF MATERIAL**

Bar	No.	Size	Length	Shape
a1(E)	96	#6	6'-6"	—
a9(E)	200	#4	37'-6"	—
a10(E)	368	#5	37'-7"	—
b7(E)	136	#4	29'-8"	—
b8(E)	396	#9	29'-9"	—
b9(E)	8	#4	14'-8"	—
b10(E)	8	#4	14'-4"	—
b11(E)	16	#4	12'-2"	—
d(E)	136	#5	6'-10"	—
d1(E)	136	#5	8'-3"	—
e11(E)	64	#4	15'-8"	—
e12(E)	8	#8	15'-8"	—
t(E)	168	#4	9'-10"	—
w(E)	320	#5	37'-7"	—
Concrete Superstructure			Cu. Yd.	305.0
Concrete Structures			Cu. Yd.	88.1
Reinforcement Bars, Epoxy Coated			Pound	80,200

(Sheet 2 of 2)



JOB	= 2265.1	DESIGNED	- AAN	REVISED	-
FILE	= 0540853.0854-72E10-23-AppDet.dgn	CHECKED	- MDC	REVISED	-
DATE	= 9/28/2011	DRAWN	- TJD	REVISED	-
		CHECKED	- MDC	REVISED	-

**STATE OF ILLINOIS
 DEPARTMENT OF TRANSPORTATION**

**BRIDGE APPROACH SLAB DETAILS
 STRUCTURE NO. 054-0053 (NB) & STRUCTURE NO. 054-0054 (SB)**
 SHEET NO. 23 of 45 SHEETS

F.A.I. RTE.	SECTION	COUNTY	TOTAL SHEETS	SHEET NO.
55	D6 LOGAN CO BR 2011	LOGAN	224	139
			CONTRACT NO. T2E10	
ILLINOIS FED. AID PROJECT				