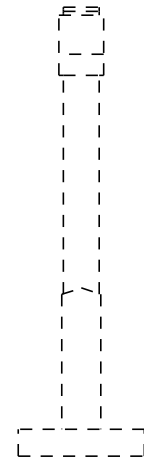
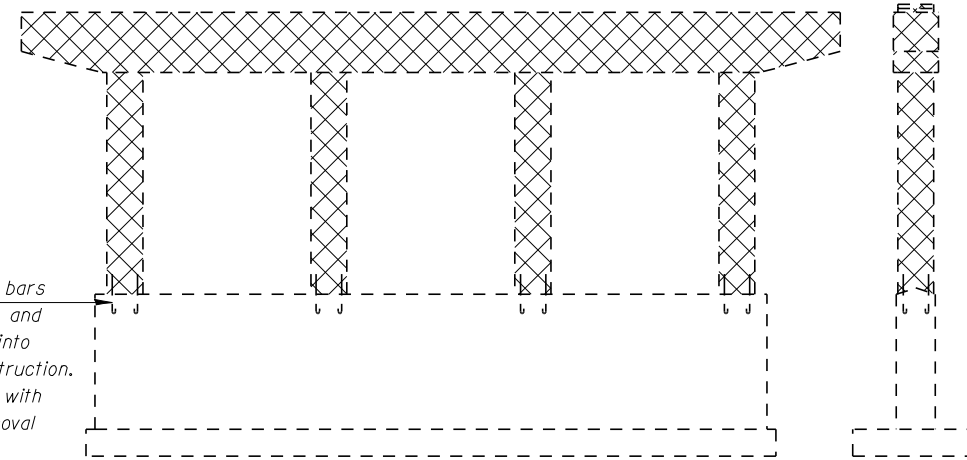


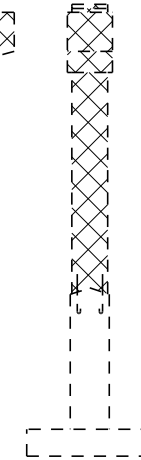
Pier 1 N.B. WEST FACE



Pier 1 N.B. SOUTH END

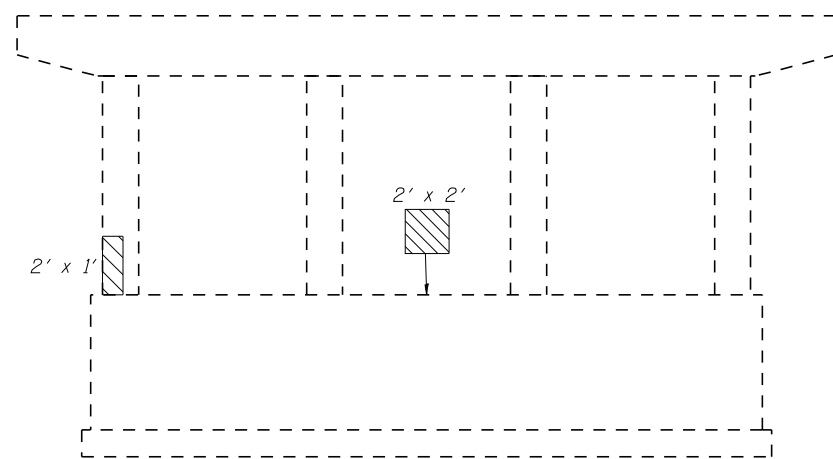


Pier 2 N.B. WEST FACE

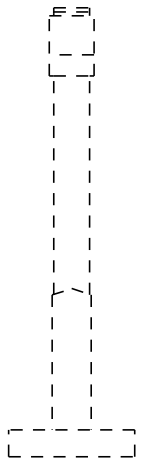


Pier 2 N.B. SOUTH END

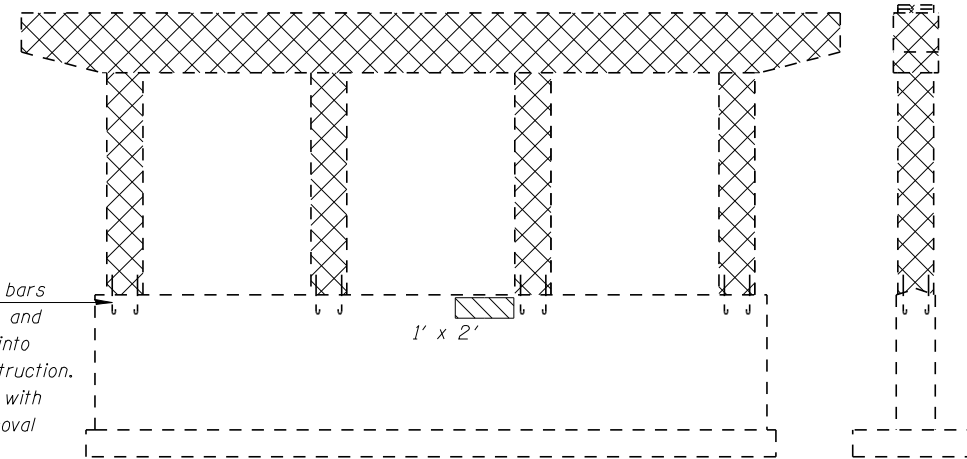
Existing #8n bars
to be cleaned and
incorporated into
the new construction.
Cost included with
Concrete Removal
(typ.)



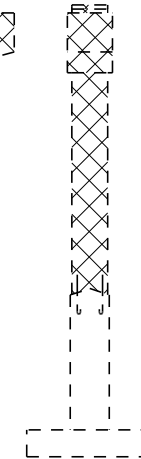
Pier 1 N.B. EAST FACE



Pier 1 N.B. NORTH END



Pier 2 N.B. EAST FACE



Pier 2 N.B. NORTH END

Existing #8n bars
to be cleaned and
incorporated into
the new construction.
Cost included with
Concrete Removal
(typ.)

LEGEND



Denotes Structural Repair of Concrete
(Depth Equal to or Less Than 5")



Denotes Concrete Removal

NOTES

- Existing Reinforcement which extends into the removal areas is to be preserved, cleaned and incorporated into the new construction in accordance with Section 501.03 of the Standard Specifications. Cost included in CONCRETE REMOVAL.
- Existing Girders to be supported during the removal and reconstruction of Pier 2. See Special Provision for Temporary Support System.

BILL OF MATERIAL

Item	Unit	Total
Structural Repair of Concrete (Depth Equal to or Less Than 5")	Sq. Ft.	11
Concrete Removal	Cu. Yd.	65.7
Temporary Support System	L. Sum	0.5