

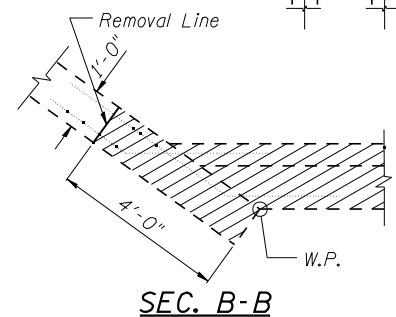
WINGWALL ELEVATION

ELEVATION

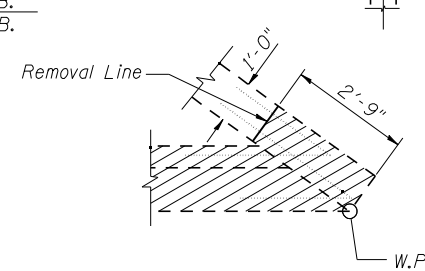
(Looking West - W. Abut. - S.B.)
(Looking East - E. Abut. - N.B.)

VALUES OF A & B

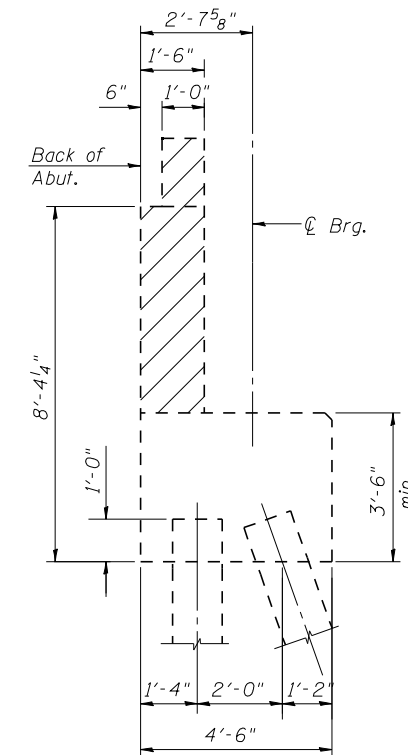
	West Abut.		East Abut.	
	Inside Wing	Outside Wing	Inside Wing	Outside Wing
A	6'-0 3/4"	6'-0 7/8"	6'-0 3/4"	6'-0 3/4"
B	9'-6 3/4"	9'-8 7/8"	9'-6 3/4"	9'-9 1/4"



SEC. B-B

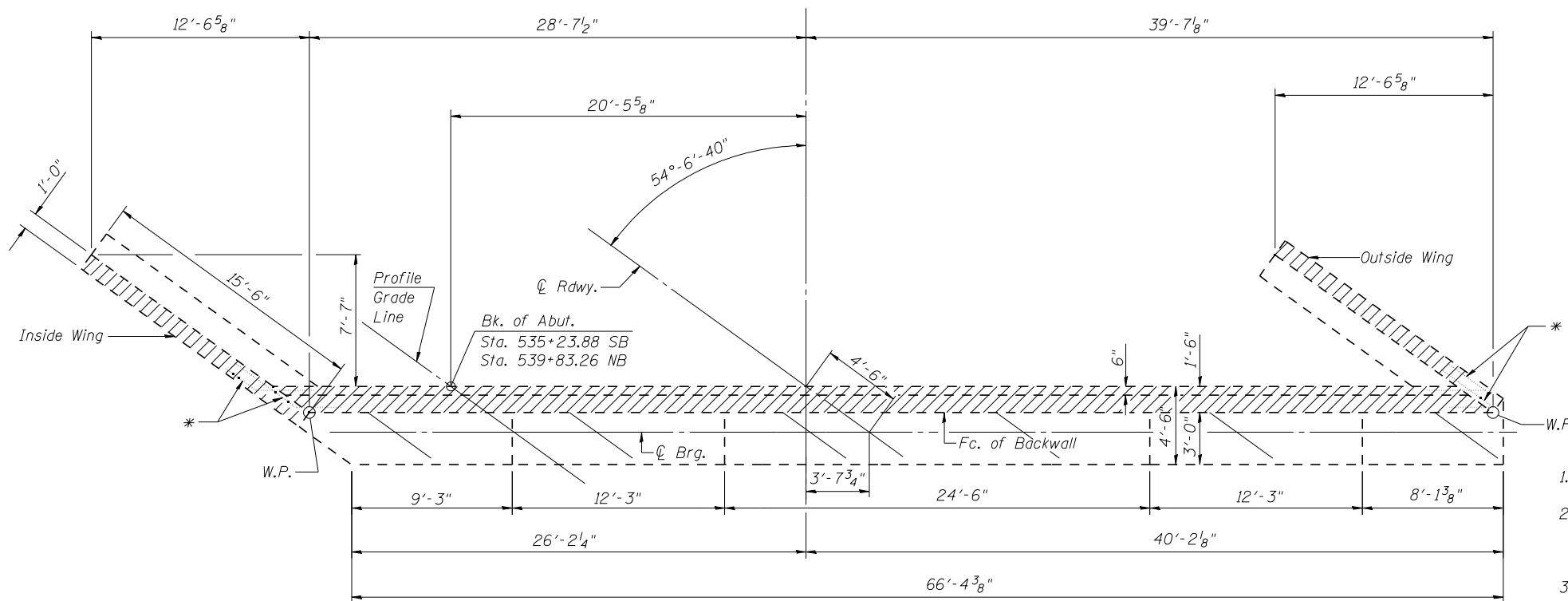


SEC. C-C



SEC. THRU ABUT.

* Existing Reinforcement To Remain (Ea. Wing)



PLAN

(West Abutment - S.B.)
(East Abutment - N.B.)

NOTE

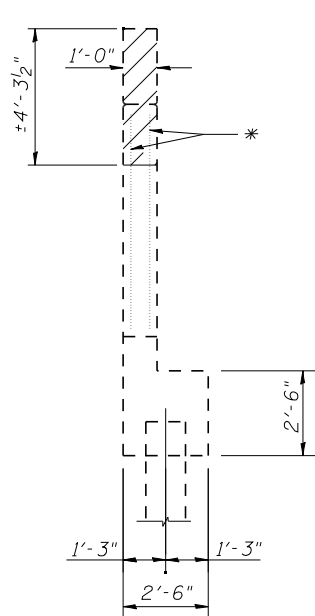
Plan elevations relative to the existing structure have been taken from existing plans and reduced by 0.38 feet to match benchmark datum.

NOTES

- Hatched area indicates Concrete Removal
- Existing wingwall reinforcement shall be cleaned and incorporated into the new construction. Cost included with Concrete Removal.
- Existing vertical bars in backwall shall be cut off and covered with a layer of epoxy. Cost included with Concrete Removal.

**TWO (2) ABUTMENTS
BILL OF MATERIAL**

Item	Unit	Total
Concrete Removal	Cu. Yd.	56.2



SEC. A-A

TABLE OF STEP HEIGHTS

	a	b	c	d
W. Abut. S.B.	2 1/8"	3 5/8"	2 5/8"	1 1/4"
E. Abut. N.B.	2 1/4"	4 1/2"	3 3/4"	2 1/2"

