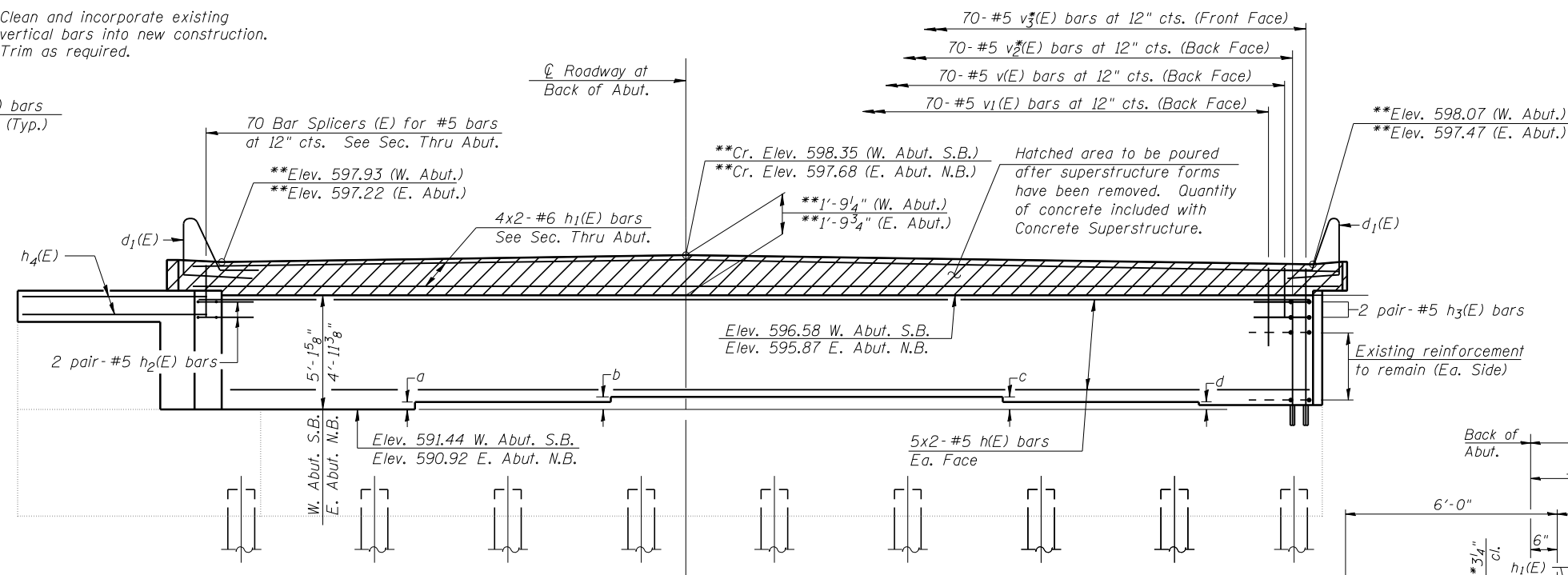


WINGWALL ELEVATION

Elev.	West Abut. - S.B.		East Abut. - N.B.	
	Outside Wing	Inside Wing	Inside Wing	Outside Wing
X	596.80	596.66	595.95	596.20

Notes:
 All bars designated with an asterisk (ex: v₂^{*}(E)) shall be epoxy grouted in accordance with Section 584 of the Standard Specifications. Minimum embedment = 9". Locate bars to miss existing reinforcement.
 Existing wingwall reinforcement shall be cleaned and incorporated into the new construction. Cost included with Concrete Removal.
 Existing vertical bars in backwall shall be cut off and covered with a layer of epoxy. Cost included with Concrete Removal.
 Concrete Sealer shall be applied to the front face of the backwall.
 Bars indicated thus 5x2-#6 etc. indicates 5 lines of bars with 2 lengths per line.

***Clean and incorporate existing vertical bars into new construction. Trim as required.

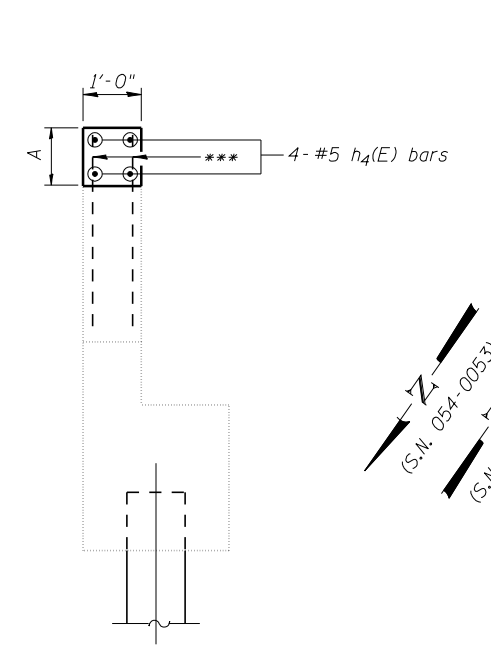


ELEVATION

(Looking West - W. Abut. - S.B.)
 (Looking East - E. Abut. - N.B.)

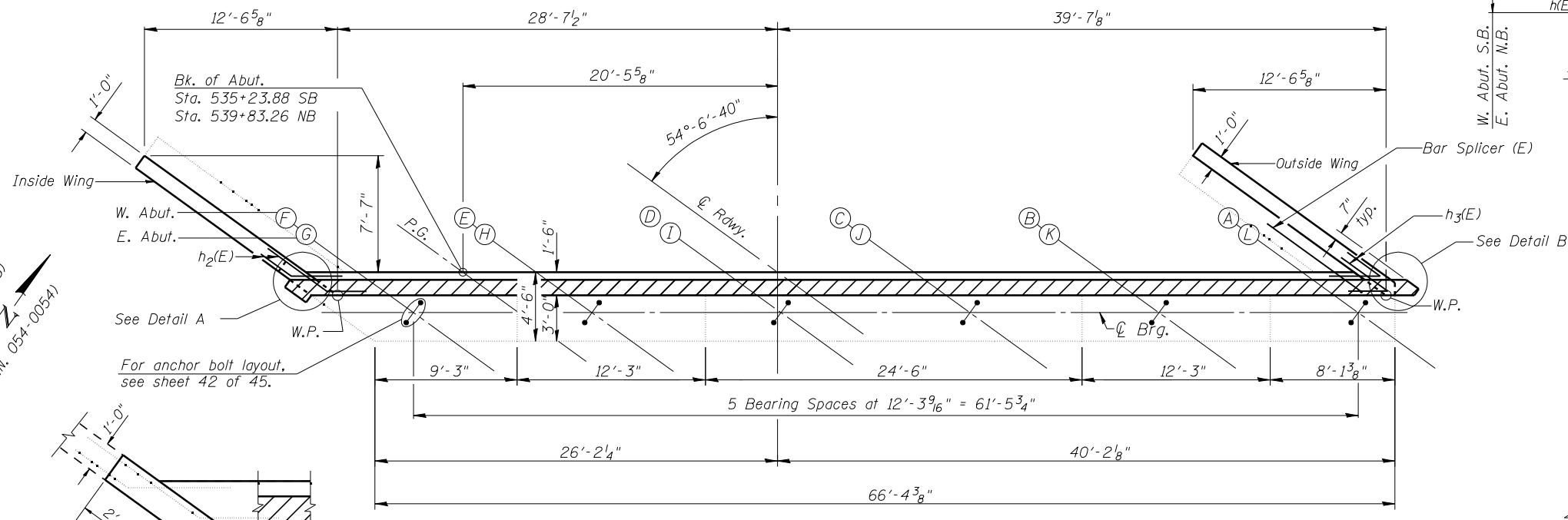
TABLE OF EXISTING STEP HEIGHTS

	a	b	c	d
West Abutment (S.B.)	2 1/8"	3 5/8"	2 5/8"	1 1/4"
East Abutment (N.B.)	2 1/4"	4 1/2"	3 3/4"	2 1/2"



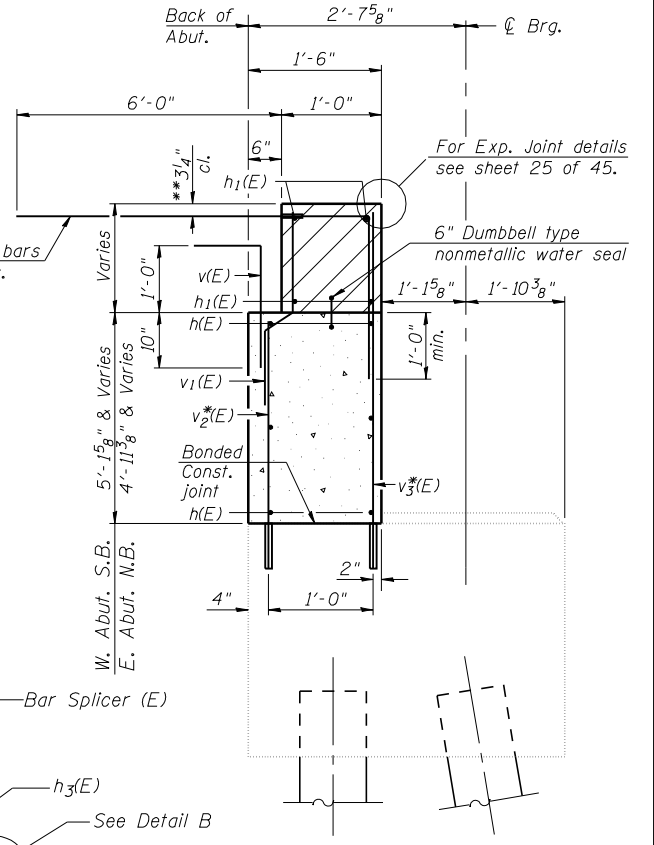
SEC. A-A

Dim.	West Abut. - S.B.		East Abut. - N.B.	
	Outside Wing	Inside Wing	Inside Wing	Outside Wing
A	1'-2 1/4"	1'-2"	11 5/8"	1'-0 1/8"

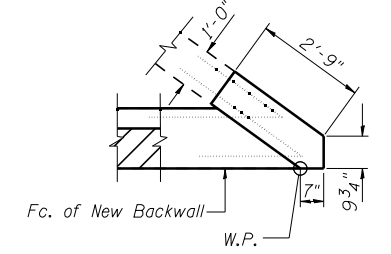


PLAN
 (West Abutment - S.B.)
 (East Abutment - N.B.)

MINIMUM BAR LAP
 #5 bar = 3'-3"
 #6 bar = 3'-10"



SEC. THRU ABUT.
 (Dimensions at Rt. L's)



DETAIL B