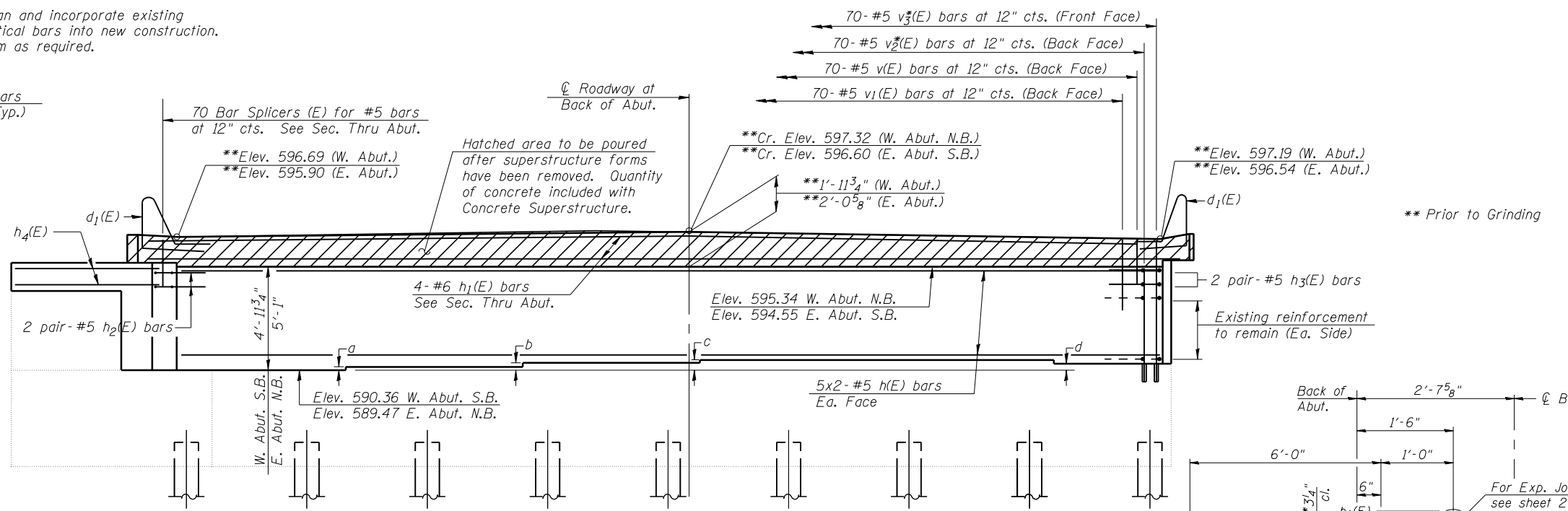


WINGWALL ELEVATION

Elev.	West Abut. - N.B.		East Abut. - S.B.	
	Inside Wing	Outside Wing	Outside Wing	Inside Wing
X	596.80	596.66	595.95	596.20

***Clean and incorporate existing vertical bars into new construction. Trim as required.



ELEVATION

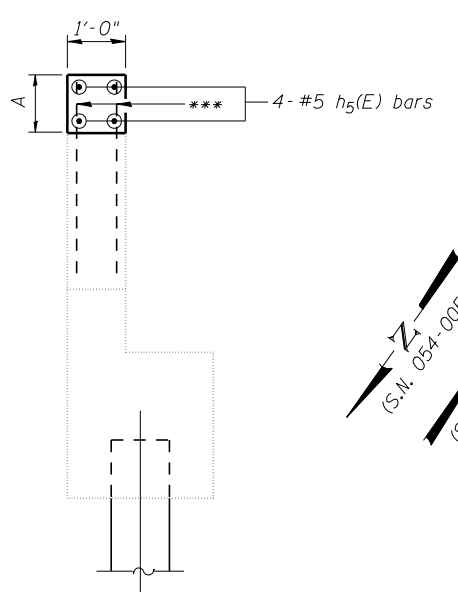
(Looking West - W. Abut. - N.B.)
(Looking East - E. Abut. - S.B.)

TABLE OF EXISTING STEP HEIGHTS

	a	b	c	d
West Abutment (N.B.)	2 3/4"	5"	6 1/2"	5 1/2"
East Abutment (S.B.)	3"	5 5/8"	6 7/8"	6 7/8"

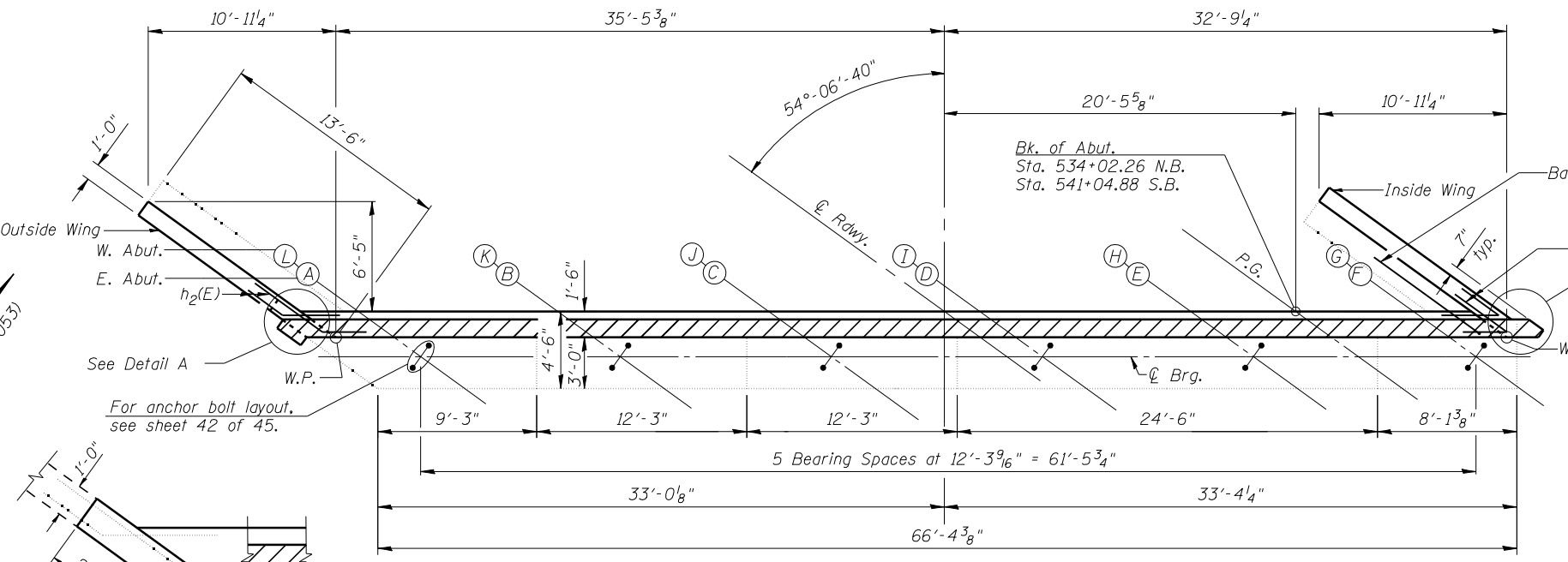
Notes:
All bars designated with an asterisk (ex: v₂(E)) shall be epoxy grouted in accordance with Section 584 of The Standard Specifications. Minimum embedment = 9". Locate bars to miss existing reinforcement.
Existing wingwall reinforcement shall be cleaned and incorporated into the new construction. Cost included with Concrete Removal.
Existing vertical bars in backwall shall be cut off and covered with a layer of epoxy. Cost included with Concrete Removal.
Concrete Sealer shall be applied to the front face of the backwall.
Bars indicated thus 5x2-#6 etc. indicates 5 lines of bars with 2 lengths per line.

Bar splicer (E) for #5 bars. Alternate with v(E) bars. Place parallel to beams.



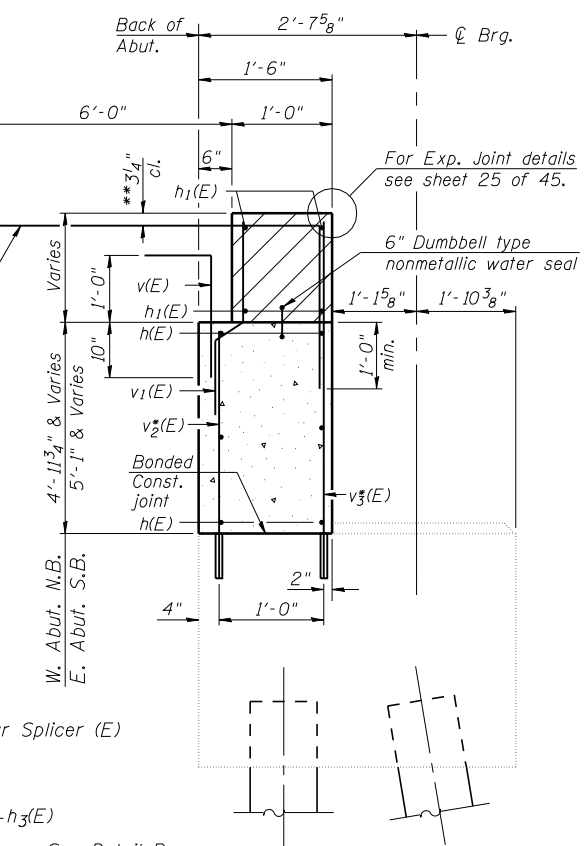
SEC. A-A

Dim.	West Abut. - N.B.		East Abut. - S.B.	
	Inside Wing	Outside Wing	Outside Wing	Inside Wing
A	1'-0 1/2"	1'-0 8/8"	1'-1 1/2"	1'-2 1/2"

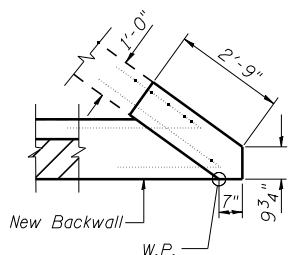


PLAN

(West Abutment - N.B.)
(East Abutment - S.B.)



SEC. THRU ABUT.
(Dimensions at Rt. L's)



DETAIL B



JOB = 2265.1
FILE = 0540053.0054-72E10-41-AbutDet.dgn
DATE = 9/9/2011

DESIGNED - AAN
CHECKED - MDC
DRAWN - TSH
CHECKED - MDC

REVISED -
REVISED -
REVISED -
REVISED -

STATE OF ILLINOIS
DEPARTMENT OF TRANSPORTATION

ABUTMENT DETAILS
STRUCTURE NO. 054-0053 (NB) & 054-0054 (SB)

SHEET NO. 41 of 45 SHEETS

F.A.I. RTE.	SECTION	COUNTY	TOTAL SHEETS	SHEET NO.
55	D6 LOGAN CO BR 2011	LOGAN	224	157

CONTRACT NO. 72E10

ILLINOIS FED. AID PROJECT