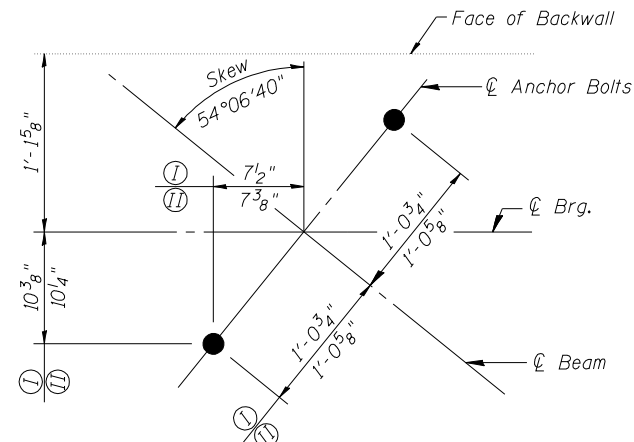
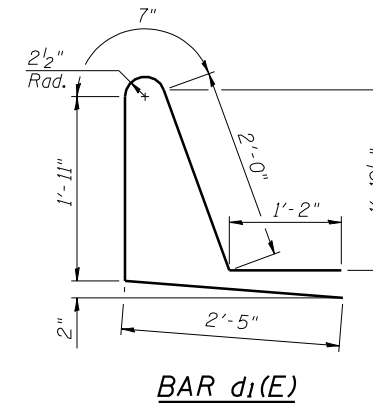


**EXISTING BEARING SEAT ELEVATIONS
S.N. 054-0053 (NB)**

	G	H	I	J	K	L
West Abutment	590.82	590.88	590.88	590.78	590.59	590.36
East Abutment	590.92	591.11	591.30	591.30	591.23	591.13

**EXISTING BEARING SEAT ELEVATIONS
S.N. 054-0054 (SB)**

	A	B	C	D	E	F
West Abutment	591.54	591.66	591.74	591.74	591.62	591.44
East Abutment	589.47	589.72	589.94	590.04	590.04	589.04

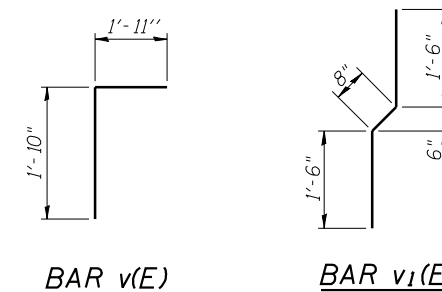
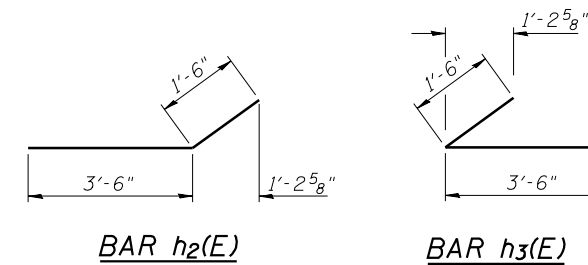


ANCHOR BOLT LAYOUT

- Ⓡ E. ABUT. S.B. & W. ABUT. N.B.
- Ⓢ W. ABUT. S.B. & E. ABUT. N.B.

NOTE

Plan elevations relative to the existing structure have been taken from existing plans and reduced by 0.38 feet to match benchmark datum.



**FOUR (4) ABUTMENTS
BILL OF MATERIAL**

Bar	No.	Size	Length	Shape
d ₁ (E)	16	#5	8'-1"	└
h(E)	80	#5	38'-1"	—
h ₁ (E)	32	#6	40'-6"	—
h ₂ (E)	16	#5	5'-0"	└
h ₃ (E)	16	#5	5'-0"	└
h ₄ (E)	32	#5	15'-3"	—
h ₅ (E)	32	#5	13'-3"	—
v(E)	280	#5	3'-9"	└
v ₁ (E)	280	#5	3'-8"	└
v ₂ (E)	280	#5	5'-6"	—
v ₃ (E)	280	#5	6'-10"	—
Concrete Structures			Cu. Yd.	82.6
Reinforcement Bars, Epoxy Coated			Pound	11,940
Concrete Sealer			Sq. Ft.	2,015

All bars designated with an asterisk (ex: v₂(E)) shall be epoxy grouted in accordance with Section 584 of the Standard Specifications. Minimum embedment = 9". Locate bars to miss existing reinforcement.