

**NORTH EDGE OF SHOULDER**

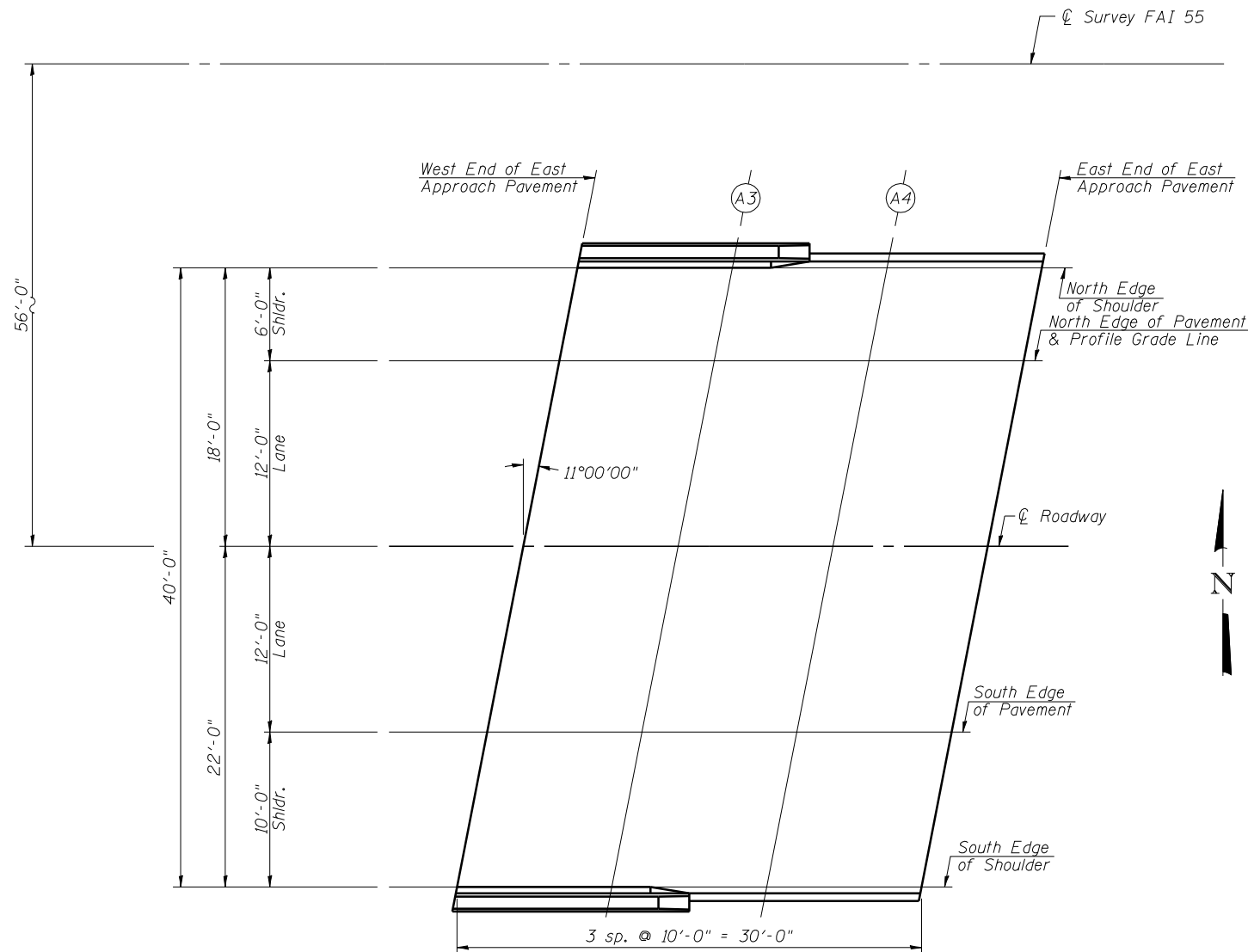
| Location                 | Station   | Offset | Theoretical Grade Elevations | Theoretical Grade Elevations Adjusted For Grinding |
|--------------------------|-----------|--------|------------------------------|--|
| W. End East Appr. Pav't. | 561+67.37 | -6.00  | 574.59                       | 574.61   |
| A3                       | 561+77.37 | -6.00  | 574.67                       | 574.69   |
| A4                       | 561+87.37 | -6.00  | 574.76                       | 574.78   |
| E. End East Appr. Pav't. | 561+97.37 | -6.00  | 574.85                       | 574.87   |

**NORTH EDGE OF PAVEMENT & PROFILE GRADE LINE**

| Location                 | Station   | Offset | Theoretical Grade Elevations | Theoretical Grade Elevations Adjusted For Grinding |
|--------------------------|-----------|--------|------------------------------|--|
| W. End East Appr. Pav't. | 561+66.20 | 0.00   | 574.71                       | 574.73   |
| A3                       | 561+76.20 | 0.00   | 574.79                       | 574.81   |
| A4                       | 561+86.20 | 0.00   | 574.87                       | 574.89   |
| E. End East Appr. Pav't. | 561+96.20 | 0.00   | 574.97                       | 574.99   |

**CL OF ROADWAY**

| Location                 | Station   | Offset | Theoretical Grade Elevations | Theoretical Grade Elevations Adjusted For Grinding |
|--------------------------|-----------|--------|------------------------------|--|
| W. End East Appr. Pav't. | 561+63.87 | 12.00  | 574.88                       | 574.90   |
| A3                       | 561+73.87 | 12.00  | 574.96                       | 574.98   |
| A4                       | 561+83.87 | 12.00  | 575.04                       | 575.06   |
| E. End East Appr. Pav't. | 561+93.87 | 12.00  | 575.13                       | 575.15   |



**SOUTH EDGE OF PAVEMENT**

| Location                 | Station   | Offset | Theoretical Grade Elevations | Theoretical Grade Elevations Adjusted For Grinding |
|--------------------------|-----------|--------|------------------------------|--|
| W. End East Appr. Pav't. | 561+61.54 | 24.00  | 574.67                       | 574.69   |
| A3                       | 561+71.54 | 24.00  | 574.75                       | 574.77   |
| A4                       | 561+81.54 | 24.00  | 574.83                       | 574.85   |
| E. End East Appr. Pav't. | 561+91.54 | 24.00  | 574.92                       | 574.94   |

**SOUTH EDGE OF SHOULDER**

| Location                 | Station   | Offset | Theoretical Grade Elevations | Theoretical Grade Elevations Adjusted For Grinding |
|--------------------------|-----------|--------|------------------------------|--|
| W. End East Appr. Pav't. | 561+59.59 | 34.00  | 574.45                       | 574.47   |
| A3                       | 561+69.59 | 34.00  | 574.53                       | 574.55   |
| A4                       | 561+79.59 | 34.00  | 574.61                       | 574.63   |
| E. End East Appr. Pav't. | 561+89.59 | 34.00  | 574.70                       | 574.72   |

**PLAN**