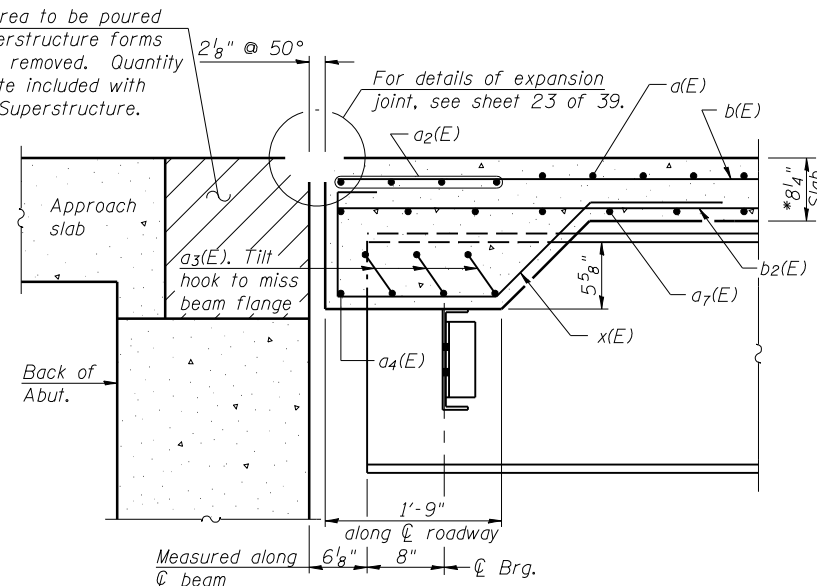
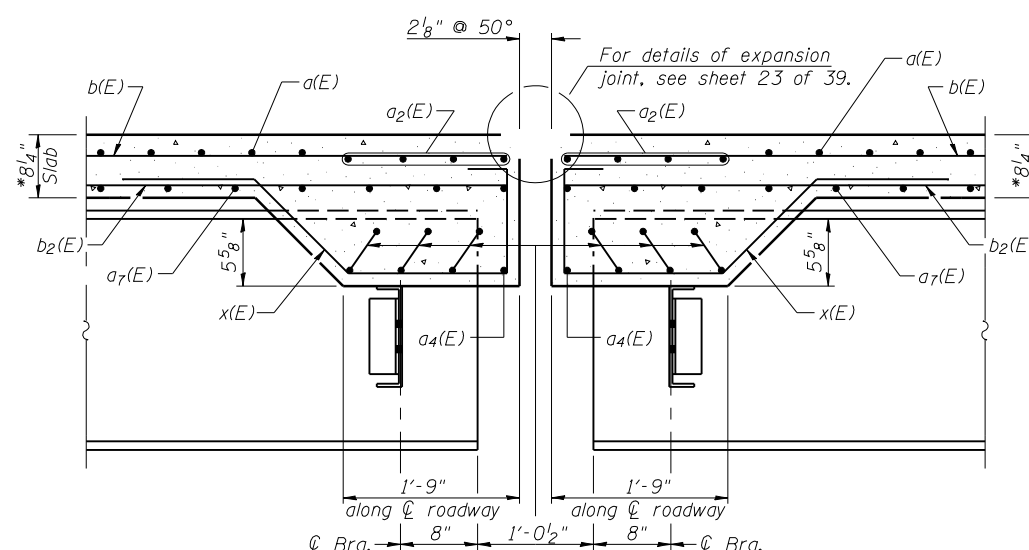


Hatched area to be poured after superstructure forms have been removed. Quantity of concrete included with Concrete Superstructure.

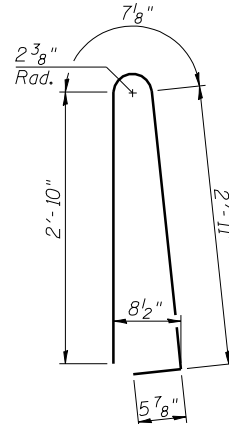


SECTION A-A

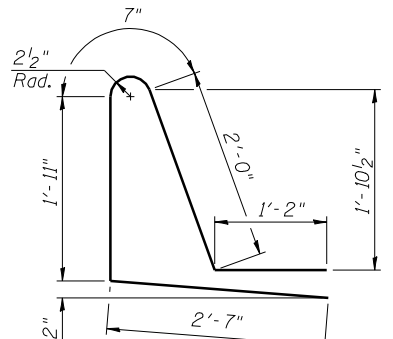
*Prior to Grinding, Max 1/4"



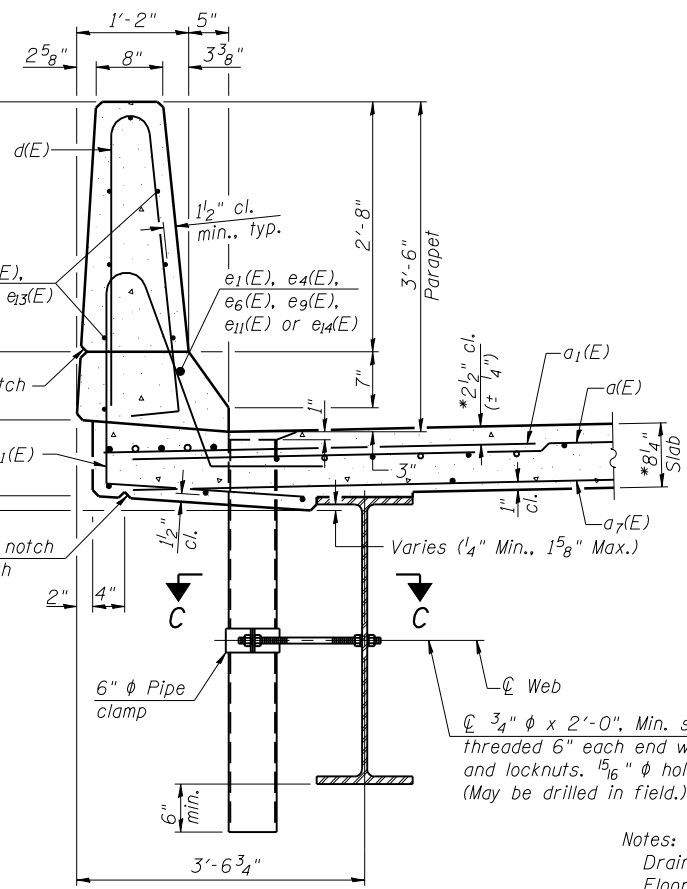
SECTION B-B



BAR d(E)

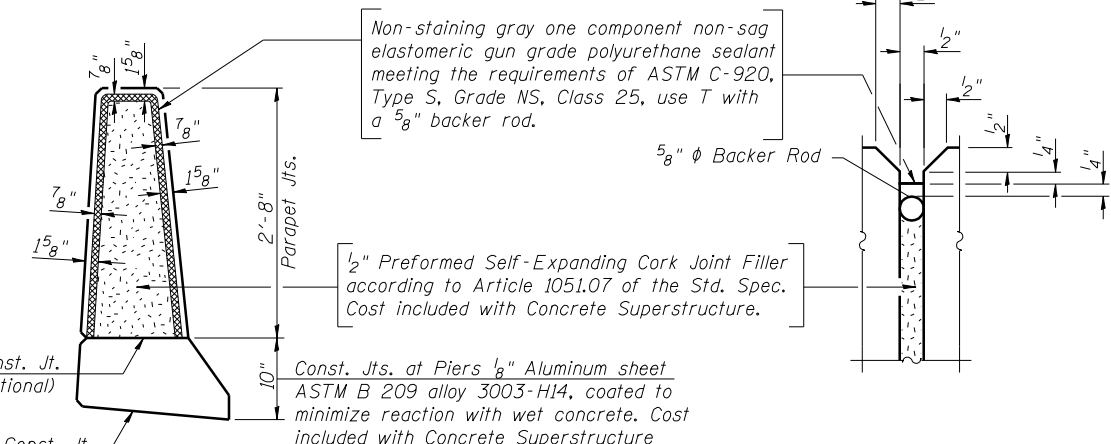


BAR d1(E)

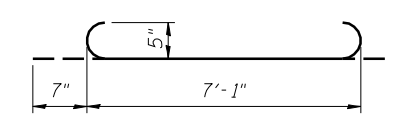


SECTION THRU PARAPET

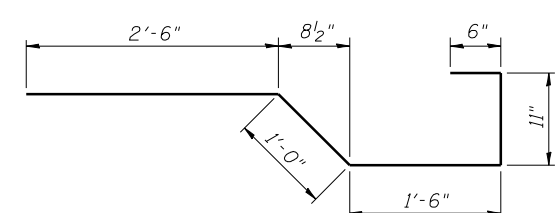
Notes:
Drains shall be located clear of all diaphragms.
Floor drains need not be painted.
Fiberglass pipe shall conform to ASTM D 2996, with short-time rupture strength hoop tensile stress of 30,000 p.s.i. minimum.
Galvanize clamping device according to AASHTO M232. Cost of clamping device and inserts is included with Floor Drains.



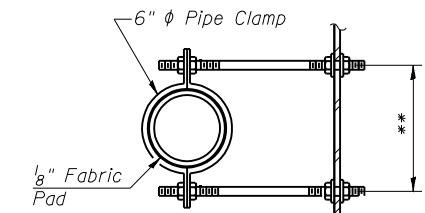
PARAPET JOINT DETAILS



a3(E) BAR

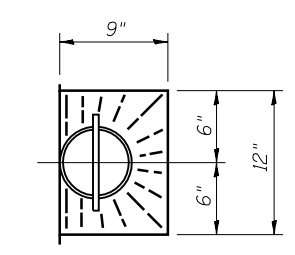


BAR x(E)

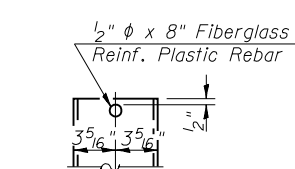


SECTION C-C

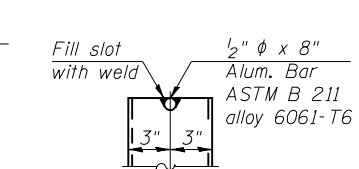
**Dimension as required by Pipe Clamp



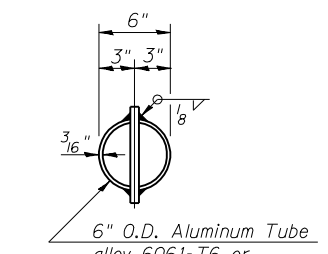
TOP PLAN



FIBERGLASS PIPE



ALUMINUM TUBE



TOP PLAN (Showing Aluminum Tube)

TWO (2) SUPERSTRUCTURES
BILL OF MATERIAL

Bar	No.	Size	Length	Shape	
a(E)	2652	#5	42'-6"	—	
a1(E)	5296	#6	6'-6"	—	
a2(E)	32	#5	43'-0"	—	
a3(E)	120	#5	8'-3"	—	
a4(E)	8	#5	36'-4"	—	
a7(E)	1620	#5	31'-6"	—	
b(E)	2576	#5	24'-9"	—	
b1(E)	688	#6	30'-6"	—	
b2(E)	2460	#5	23'-3"	—	
d(E)	2656	#5	6'-10"	—	
d1(E)	2656	#5	8'-3"	—	
e(E)	168	#4	16'-10"	—	
e1(E)	16	#8	28'-9"	—	
e2(E)	16	#4	27'-2"	—	
e3(E)	256	#4	8'-3"	—	
e4(E)	32	#8	8'-3"	—	
e5(E)	336	#4	14'-6"	—	
e6(E)	32	#8	24'-9"	—	
e7(E)	32	#4	23'-2"	—	
e8(E)	256	#4	7'-2"	—	
e9(E)	32	#8	7'-2"	—	
e10(E)	168	#4	14'-11"	—	
e11(E)	16	#8	25'-4"	—	
e12(E)	16	#4	23'-9"	—	
e13(E)	168	#4	17'-1"	—	
e14(E)	16	#8	28'-7"	—	
e15(E)	16	#4	27'-0"	—	
x(E)	280	#5	6'-5"	—	
Reinforcement Bars, Epoxy Coated				Pound	463,150
Concrete Superstructure				Cu. Yds.	1718.3