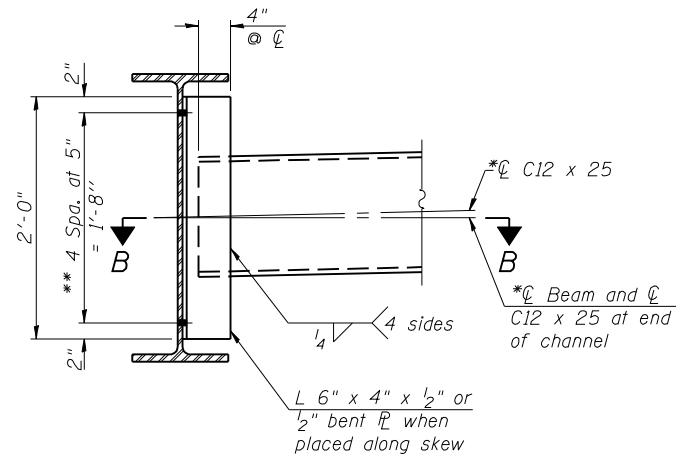
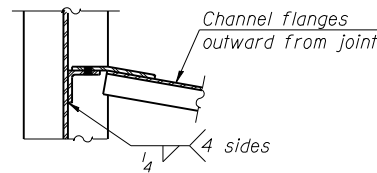


SECTION B-B

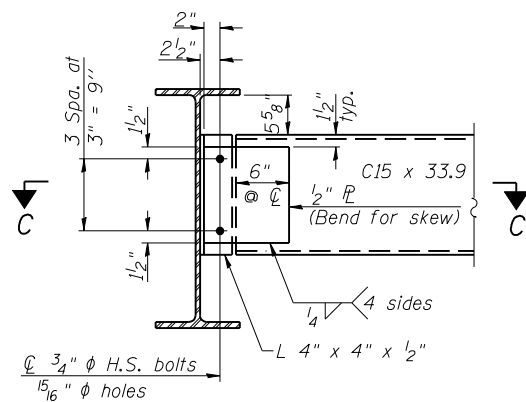


INTERIOR DIAPHRAGM D
(280 Required)

Notes:
Two hardened washers required for each set of oversized holes.
*Alternate C12 x 30 channels are permitted to facilitate material acquisition. Calculated weight of structural steel is based on the lighter section. The alternate, if utilized, shall be provided at no additional cost to the Department.
** $\frac{3}{4}$ " ϕ HS bolts, $\frac{15}{16}$ " ϕ holes

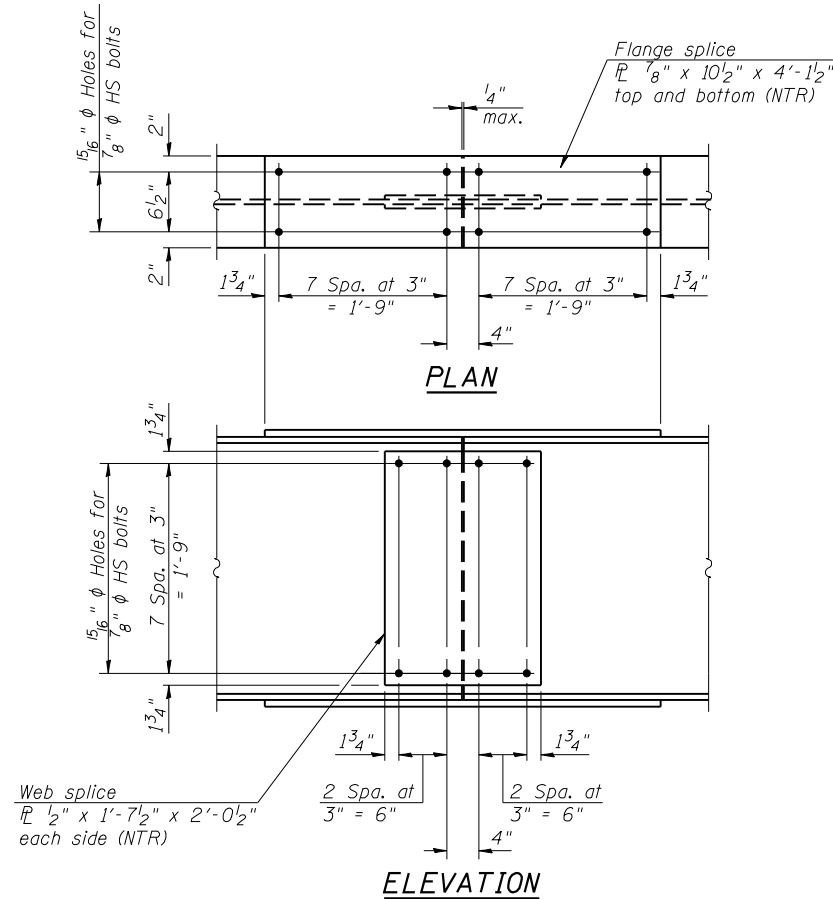


SECTION C-C



END DIAPHRAGM D1
(40 Required)

Note:
Two hardened washers required for each set of oversized holes.



ELEVATION
SPlice DETAIL
(96 Required)

Note:
Load carrying components designated "NTR" shall conform to the Supplemental Requirements for Notch Toughness, Zone 2.

TOP OF BEAM ELEVATIONS - S.N. 054-0056 (SB)
(For fabrication only)

Location	Beam A	Beam B	Beam C	Beam D	Beam E	Beam F
⊕ Brq. West Abutment	573.35	573.50	573.62	573.69	573.58	573.45
⊕ Splice 1	573.22	573.37	573.49	573.55	573.44	573.30
⊕ Brq. Pier 1	573.22	573.37	573.49	573.55	573.44	573.30
⊕ Splice 2	573.22	573.37	573.49	573.55	573.44	573.30
⊕ Brq. Pier 2	573.22	573.37	573.49	573.55	573.44	573.30
⊕ Splice 3	573.22	573.37	573.49	573.55	573.44	573.30
⊕ Brq. Pier 3	573.22	573.37	573.49	573.55	573.44	573.30
⊕ Splice 4	573.22	573.37	573.49	573.55	573.44	573.30
⊕ Brq. Pier 4	573.23	573.38	573.50	573.56	573.45	573.31
⊕ W. Brq. Pier 5	573.28	573.43	573.55	573.61	573.50	573.36
⊕ E. Brq. Pier 5	573.28	573.43	573.55	573.61	573.50	573.36
⊕ Brq. Pier 6	573.23	573.38	573.50	573.56	573.45	573.31
⊕ Splice 5	573.22	573.37	573.49	573.55	573.44	573.30
⊕ Brq. Pier 7	573.22	573.37	573.49	573.55	573.44	573.30
⊕ Splice 6	573.22	573.37	573.49	573.55	573.44	573.30
⊕ Brq. Pier 8	573.38	573.53	573.64	573.70	573.58	573.44
⊕ Splice 7	573.42	573.57	573.68	573.73	573.62	573.48
⊕ Brq. Pier 9	573.73	573.87	573.98	574.03	573.91	573.77
⊕ Splice 8	573.81	573.95	574.06	574.11	573.99	573.84
⊕ Brq. East Abutment	574.27	574.41	574.51	574.56	574.43	574.28

TOP OF BEAM ELEVATIONS - S.N. 054-0055 (NB)
(For fabrication only)

Location	Beam G	Beam H	Beam I	Beam J	Beam K	Beam L
⊕ Brq. West Abutment	573.50	573.64	573.76	573.70	573.58	573.44
⊕ Splice 1	573.34	573.48	573.59	573.53	573.41	573.26
⊕ Brq. Pier 1	573.34	573.48	573.59	573.53	573.41	573.26
⊕ Splice 2	573.34	573.48	573.59	573.53	573.41	573.26
⊕ Brq. Pier 2	573.34	573.48	573.59	573.53	573.41	573.26
⊕ Splice 3	573.34	573.48	573.59	573.53	573.41	573.26
⊕ Brq. Pier 3	573.34	573.48	573.59	573.53	573.41	573.26
⊕ Splice 4	573.34	573.48	573.59	573.53	573.41	573.26
⊕ Brq. Pier 4	573.35	573.49	573.60	573.54	573.42	573.27
⊕ W. Brq. Pier 5	573.40	573.54	573.65	573.59	573.47	573.32
⊕ E. Brq. Pier 5	573.40	573.54	573.65	573.59	573.47	573.32
⊕ Brq. Pier 6	573.35	573.49	573.60	573.54	573.42	573.27
⊕ Splice 5	573.34	573.48	573.59	573.53	573.41	573.26
⊕ Brq. Pier 7	573.34	573.48	573.59	573.53	573.41	573.26
⊕ Splice 6	573.34	573.48	573.59	573.53	573.41	573.26
⊕ Brq. Pier 8	573.34	573.48	573.59	573.53	573.41	573.26
⊕ Splice 7	573.34	573.48	573.59	573.53	573.41	573.26
⊕ Brq. Pier 9	573.52	573.65	573.76	573.69	573.57	573.41
⊕ Splice 8	573.57	573.69	573.80	573.73	573.61	573.45
⊕ Brq. East Abutment	573.90	574.02	574.13	574.05	573.93	573.77